

## Han S 450+\_CC\_HBM\_SCT\_M10\_C1\_RC1\_Red

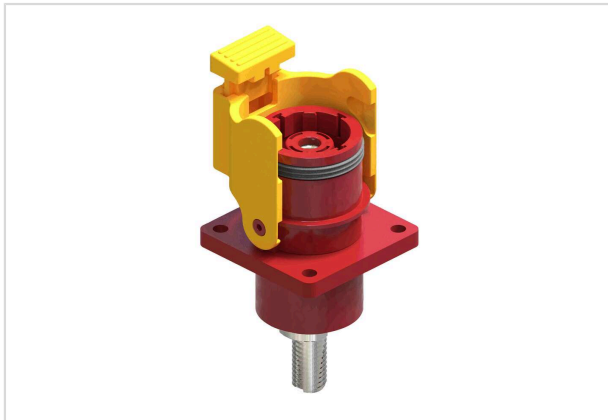


Image is for illustration purposes only. Please refer to product description.

Part number	97 00 000 2091
Specification	Han S 450+_CC_HBM_SCT_M10_C1_RC1_Red
HARTING eCatalogue	<a href="https://harting.com/97000002091">https://harting.com/97000002091</a>

### Identification

Category	Hoods / Housings
Series	Han® S
Identification	Han® S 450 Plus
Type of hood/housing	Bulkhead mounted housing
Description of hood/housing	incl. male contact with M10 bolt termination

### Version

Termination method	Screw termination
Number of contacts	1
Coding	C1 (front) RC1 (rear)
Locking type	Single locking lever
Field of application	Energy Storage Systems

### Technical characteristics

Rated voltage	2,000 V
Rated impulse voltage	15 kV
Pollution degree	3
Overvoltage category	III
Insulation resistance	$>10^9 \Omega @ 2500 \text{ V DC}$
Contact resistance	$\leq 0.3 \text{ m}\Omega$
Tightening torque	1.4 ... 1.6 Nm Fixing screws for receptacles 7.5 ... 8 Nm Contacts



**Pushing Performance**  
Since 1945

## Technical characteristics

Limiting temperature	-40 ... +125 °C
Note on the limiting temperature	For use as a connector according to IEC 61984.
Number of relockings	≤500
Degree of protection acc. to IEC 60529	IP67 / IP69K mated condition IP67 unmated condition & cover closed

## Material properties

Material (contacts)	Copper
Surface (contacts)	Silver plated
Material (hood/housing)	Polyamide (PA)
Colour (hood/housing)	RAL 3001 (signal red)
Material flammability class acc. to UL 94	V-0
RoHS	compliant
ELV status	compliant
China RoHS	e
REACH Annex XVII substances	Not contained
REACH ANNEX XIV substances	Not contained
REACH SVHC substances	Not contained
California Proposition 65 substances	Not contained

## Specifications and approvals

Specifications	IEC 61373 Category 1 Class B EN 45545-2 Hazard Level HL1-HL3 UL 4128 UL 1977 TÜV 2PFG 2740
Approvals	CE

## Commercial data

Packaging size	1
Net weight	160.465 g
Country of origin	China
European customs tariff number	85389099
eCl@ss	27440202 Shell for industrial connectors