

## har-flex Power F Cab.Con. 4P Crimp

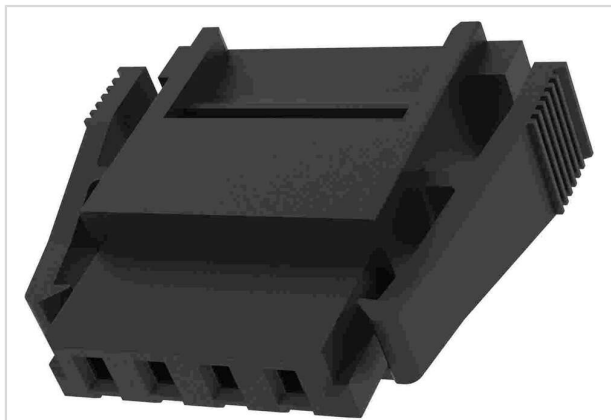


Image is for illustration purposes only. Please refer to product description.

Part number	15 69 004 0301 000
Specification	har-flex Power F Cab.Con. 4P Crimp
HARTING eCatalogue	<a href="https://harting.com/15690040301000">https://harting.com/15690040301000</a>

### Identification

Category	Connectors
Series	har-flex®
Identification	Power
Element	Female connector

### Version

Termination method	Crimp termination
Connection type	PCB to cable
Number of contacts	4
Locking type	Snap-in latches

Details	<p>This contact insert is an unenclosed connector according to IEC 61984. In this case protection against electric shock must be provided by the installation methods of the user.</p> <p>Contact inserts must not be coupled or decoupled under electrical load.</p> <p>Connector must not be powered-up in the unmated condition.</p> <p>Please order crimp contacts separately.</p>
---------	--

### Technical characteristics

Conductor cross-section (AWG)	AWG 26 ... AWG 18
Contact rows	1
Contact spacing (termination side)	2.54 mm
Contact spacing (mating side)	2.54 mm
Rated current	11 A
Rated current	The current-carrying capacity depends significantly on the printed circuit board used, the conductor cross-section used and the specific installation situation.



Pushing Performance  
Since 1945

## Technical characteristics

Rated voltage	acc. to IEC 60664-1
Pollution degree	2
Rated current acc. to UL	9 A
Rated voltage acc. to UL	250 V
Rated current acc. to CSA	7 A
Clearance distance	≥2.1 mm
Creepage distance	≥2.08 mm
Insulation resistance	>10 <sup>10</sup> Ω
Contact resistance	≤25 mΩ
Limiting temperature	-55 ... +125 °C
Insertion force	≤15 N
Withdrawal force	≥2 N ≤12 N
Test voltage U <sub>r.m.s.</sub>	1.39 kV
Isolation group	I (600 ≤ CTI)
Hot plugging	No

## Material properties

Material (insert)	Polyphthalamide (PPA)
Colour (insert)	Black
Material flammability class acc. to UL 94	V-0
RoHS	compliant
ELV status	compliant
China RoHS	e
REACH Annex XVII substances	Not contained
REACH ANNEX XIV substances	Not contained
REACH SVHC substances	Not contained
California Proposition 65 substances	Not contained

## Commercial data

Packaging size	10
Net weight	0.989 g
Country of origin	China
European customs tariff number	85366990



**Pushing Performance**  
Since 1945

## Commercial data

GTIN	5713140467804
eCl@ss	27460202 PCB connector (conductor connection)
UNSPSC 24.0	39121415