

Contact Block 1NO

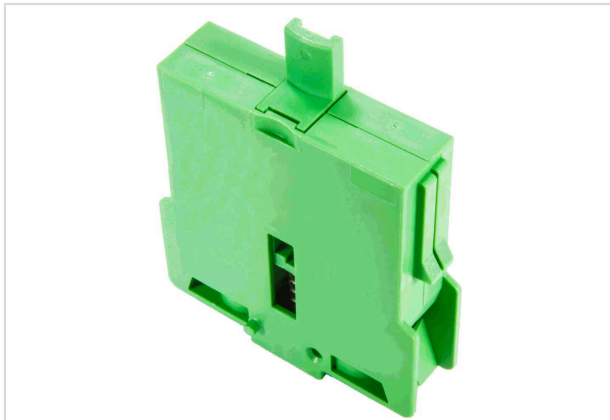


Image is for illustration purposes only. Please refer to product description.

Part number	09 45 453 0201
Specification	Contact Block 1NO
HARTING eCatalogue	https://harting.com/09454530201

Identification

Category	Operator interfaces
Element	Contact block
Specification	Closer with a weaker return spring
Features	1 million switching cycles at nominal load Positive opening according to EN 60947-5-1

Version

Termination method	Screw termination
Number of contacts	2
Details	Compared to the standard contact block, the contact block has a weaker return spring. Please observe the installation situation according to the installation instructions.

Technical characteristics

Conductor cross-section	0.5 ... 2.5 mm ²
Actuation path	6 mm
Rated current	≥0.001 A
Rated current	under laboratory conditions
Rated voltage	≥5 V
Rated impulse voltage	4 kV
Conditional short-circuit current	1,000 A
Short-circuit device (recommendation)	SCPD 16 A, Char. C
Overvoltage category	III (protection by low voltage)
Contact resistance	<20 mΩ



Pushing Performance
Since 1945

Technical characteristics

Stripping length	9 mm
Tightening torque	0.8 ... 1 Nm Screw terminal
Operating temperature	-30 ... +85 °C Without light
	-30 ... +65 °C with LED lighting
Storage temperature	-50 ... +85 °C
Degree of protection acc. to IEC 60529	IP20
Bounce time	<10 ms
Utilisation category (AC)	AC15 A600
Rated operating voltage Ue (AC)	240 V
	440 V
Rated operating current Ie (AC)	3 A
	1.6 A
Continuous thermal current (AC)	16 A
Utilisation category (DC)	DC13 Q600
Rated operating voltage Ue (DC)	24 V
	60 V
	125 V
	250 V
	440 V
Rated operating current Ie (DC)	2 A
	1 A
	0.4 A
	0.2 A
	1.12 A

Material properties

Colour (insert)	Green
Material (contacts)	Copper alloy
Surface (contacts)	Ag over Ni
RoHS	compliant
ELV status	compliant
China RoHS	e
REACH Annex XVII substances	Not contained
REACH ANNEX XIV substances	Not contained
REACH SVHC substances	Not contained
California Proposition 65 substances	Not contained
Fire protection on railway vehicles	EN 45545-2 (2020-08)



Pushing Performance
Since 1945

Material properties

Requirement set with Hazard Levels	R22 (HL 1-3)
	R23 (HL 1-3)

Specifications and approvals

Specifications	EN 60947-5-1
UL / CSA	UL 60947-5-1 NKCR.E534795
	CSA C22.2 No. 60947-5-1:22 NKCR7.E534795

Commercial data

Packaging size	20
Net weight	12 g
Country of origin	Germany
European customs tariff number	85365080
GTIN	5713140450271
eCl@ss	27371302 Auxiliary switch block
ETIM	EC000041
UNSPSC 24.0	39122221