

Han 24Ex UL-M-c

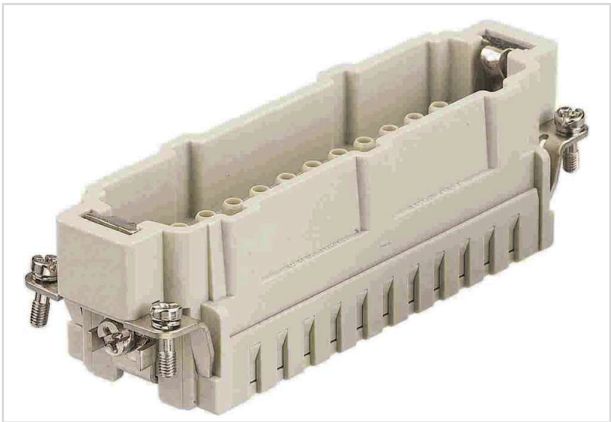


Image is for illustration purposes only. Please refer to product description.

| | |
|--------------------|---|
| Part number | 09 36 524 2602 |
| Specification | Han 24Ex UL-M-c |
| HARTING eCatalogue | https://harting.com/09365242602 |

Identification

| | |
|----------|---------------------|
| Category | Inserts |
| Series | Han [®] Ex |

Version

| | |
|--------------------|---|
| Termination method | Crimp termination |
| Gender | Male |
| Size | 24 B |
| Number of contacts | 24 |
| PE contact | Yes |
| Details | Simple Apparatus for intrinsically safe circuits Please order crimp contacts separately. for US purposes only |
| Details | ATTENTION! Only to be used with Han [®] Ex hoods and housings! |

Technical characteristics

| | |
|----------------------------------|----------------------------|
| Conductor cross-section | 0.14 ... 4 mm ² |
| Rated current | 16 A |
| Rated voltage | 90 V |
| Insulation resistance | >10 ¹⁰ Ω |
| Tightening torque | 1.2 Nm PE screw M4 |
| Recommended screw driver | Slotted 0.8 x 4.5 PH2 |
| Limiting temperature | -20 ... +40 °C |
| Note on the limiting temperature | Up to +70 °C in T4 |



Pushing Performance
Since 1945

Technical characteristics

| | |
|---------------|------|
| Mating cycles | ≥500 |
|---------------|------|

Material properties

| | |
|---|------------------------|
| Material (insert) | Polycarbonate (PC) |
| Colour (insert) | RAL 7032 (pebble grey) |
| Material flammability class acc. to UL 94 | V-0 |
| RoHS | compliant |
| ELV status | compliant |
| China RoHS | e |
| REACH Annex XVII substances | Not contained |
| REACH ANNEX XIV substances | Not contained |
| REACH SVHC substances | Not contained |
| California Proposition 65 substances | Yes |
| California Proposition 65 substances | Lead |
| | Nickel |

Specifications and approvals

| | |
|----------|---------------------------------|
| UL / CSA | UL 2237 CYJX2.E482115 |
| | CSA-C22.2 No. 213 CYJX8.E482115 |

Commercial data

| | |
|--------------------------------|---|
| Packaging size | 1 |
| Net weight | 72.67 g |
| Country of origin | Germany |
| European customs tariff number | 85366990 |
| GTIN | 5713140186859 |
| eCl@ss | 27440205 Contact insert for industrial connectors |
| ETIM | EC000438 |
| UNSPSC 24.0 | 39121522 |