

## Han L32 E-SMC-FI-SCT-0.75 - 2.5 mm<sup>2</sup>

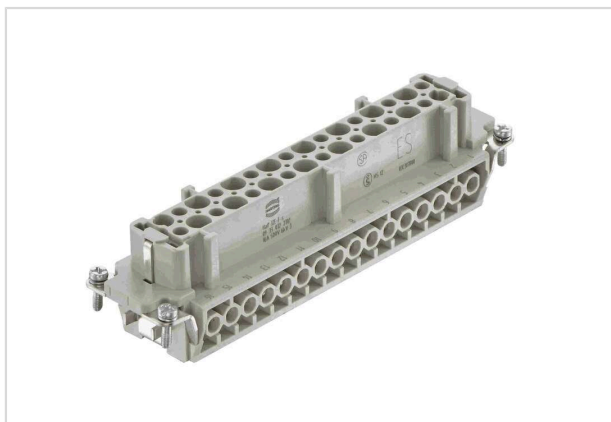


Image is for illustration purposes only. Please refer to product description.

Part number	09 33 032 2701
Specification	Han L32 E-SMC-FI-SCT-0.75 - 2.5 mm <sup>2</sup>
HARTING eCatalogue	<a href="https://harting.com/09330322701">https://harting.com/09330322701</a>

### Identification

Category	Inserts
Series	Han E <sup>®</sup>

### Version

Termination method	Screw termination
Gender	Female
Size	L32 B
With wire protection	Yes
Number of contacts	32
PE contact	Yes

### Technical characteristics

Conductor cross-section	0.75 ... 2.5 mm <sup>2</sup>
Conductor cross-section [AWG]	AWG 18 ... AWG 14
Rated current	16 A
Rated voltage	500 V
Rated impulse voltage	6 kV
Pollution degree	3
Rated voltage acc. to UL	600 V
Rated voltage acc. to CSA	600 V
Insulation resistance	>10 <sup>10</sup> Ω
Contact resistance	≤1 mΩ
Stripping length	7.5 mm



**Pushing Performance**  
Since 1945

## Technical characteristics

Tightening torque	0.5 Nm Contact screw M3
	0.5 Nm Fixing screws M3
	1.2 Nm PE screw M4
Recommended screw driver	Slotted 0.6 x 3.5
	Slotted 0.8 x 4.5
	PH1
	PH2
Limiting temperature	-40 ... +125 °C
Mating cycles	≥500

## Material properties

Material (insert)	Polycarbonate (PC)
Colour (insert)	RAL 7032 (pebble grey)
Material (contacts)	Copper alloy
Surface (contacts)	Silver plated
Material flammability class acc. to UL 94	V-0
RoHS	compliant with exemption
RoHS exemptions	6(a) / 6(a)-I: Lead as an alloying element in steel for machining purposes and in galvanised steel containing up to 0,35 % lead by weight / Lead as an alloying element in steel for machining purposes containing up to 0,35 % lead by weight and in batch hot dip galvanised steel components containing up to 0,2 % lead by weight
	6(c): Copper alloy containing up to 4 % lead by weight
ELV status	compliant with exemption
China RoHS	50
REACH Annex XVII substances	Not contained
REACH ANNEX XIV substances	Not contained
REACH SVHC substances	Yes
REACH SVHC substances	Lead
California Proposition 65 substances	Yes
California Proposition 65 substances	Lead

## Specifications and approvals

Specifications	IEC 60664-1
	IEC 61984
UL / CSA	UL 1977 ECBT2.E235076
	CSA-C22.2 No. 182.3 PVVA8.E318390



Pushing Performance  
Since 1945

Specifications and approvals

Approvals	DNV GL
-----------	--------

Commercial data

Packaging size	1
Net weight	156.01 g
Country of origin	China
European customs tariff number	85366990
GTIN	5713140163263
eCl@ss	27440205 Contact insert for industrial connectors
ETIM	EC000438
UNSPSC 24.0	39121522