

Han 16E F insert screw (17-32)

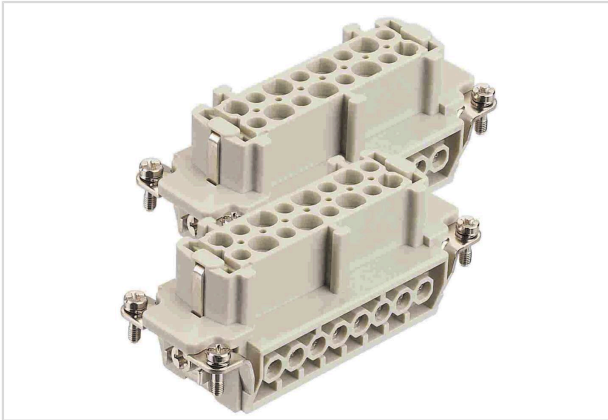


Image is for illustration purposes only. Please refer to product description.

Part number	09 33 016 2711
Specification	Han 16E F insert screw (17-32)
HARTING eCatalogue	https://harting.com/09330162711

Identification

Category	Inserts
Series	Han E [®]
Specification	Continuing marking

Version

Termination method	Screw termination
Gender	Female
Size	32 B
With wire protection	Yes
Number of contacts	32
PE contact	Yes
Contact identification	17 ... 32
Details	You need two inserts for a complete assembly!

Technical characteristics

Conductor cross-section	0.75 ... 2.5 mm ²
Conductor cross-section [AWG]	AWG 18 ... AWG 14
Rated current	16 A
Rated voltage	500 V
Rated impulse voltage	6 kV
Pollution degree	3
Rated voltage acc. to UL	600 V
Rated voltage acc. to CSA	600 V



Pushing Performance
Since 1945

Technical characteristics

Insulation resistance	$>10^{10} \Omega$
Contact resistance	$\leq 1 \text{ m}\Omega$
Stripping length	7.5 mm
Tightening torque	0.5 Nm Contact screw M3
	0.5 Nm Fixing screws M3
	1.2 Nm PE screw M4
Recommended screw driver	Slotted 0.6 x 3.5
	Slotted 0.8 x 4.5
	PH1
	PH2
Limiting temperature	-40 ... +125 °C
Mating cycles	≥ 500

Material properties

Material (insert)	Polycarbonate (PC)
Colour (insert)	RAL 7032 (pebble grey)
Material (contacts)	Copper alloy
Surface (contacts)	Silver plated
Material flammability class acc. to UL 94	V-0
RoHS	compliant with exemption
RoHS exemptions	6(c): Copper alloy containing up to 4 % lead by weight
ELV status	compliant with exemption
China RoHS	50
REACH Annex XVII substances	Not contained
REACH ANNEX XIV substances	Not contained
REACH SVHC substances	Yes
REACH SVHC substances	Lead
ECHA SCIP number	5dbb3851-b94e-4e88-97a1-571845975242
California Proposition 65 substances	Yes
California Proposition 65 substances	Lead
	Nickel
Fire protection on railway vehicles	EN 45545-2 (2020-08)
Requirement set with Hazard Levels	R22 (HL 1-3)
	R23 (HL 1-3)



Pushing Performance
Since 1945

Specifications and approvals

Specifications	IEC 60664-1
	IEC 61984
UL / CSA	UL 1977 ECBT2.E235076
	UL 2237 PVVA2.E318390
	CSA-C22.2 No. 182.3 PVVA8.E318390
Approvals	DNV GL

Commercial data

Packaging size	1
Net weight	90 g
Country of origin	Germany
European customs tariff number	85366990
GTIN	5713140051485
eCl@ss	27440205 Contact insert for industrial connectors
ETIM	EC000438
UNSPSC 24.0	39121522