



Pushing Performance  
Since 1945

# Han 28DD M-c

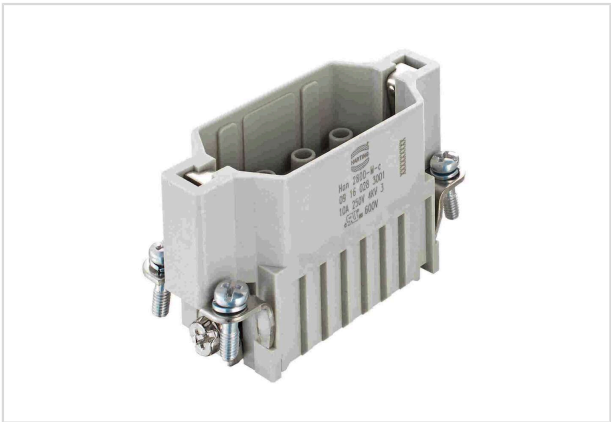


Image is for illustration purposes only. Please refer to product description.

Part number	09 16 028 3001
Specification	Han 28DD M-c
HARTING eCatalogue	<a href="https://harting.com/09160283001">https://harting.com/09160283001</a>

## Identification

Category	Inserts
Series	Han DD®

## Version

Termination method	Crimp termination
Gender	Male
Size	10 A
Number of contacts	28
PE contact	Yes
Details	Please order crimp contacts separately.

## Technical characteristics

Conductor cross-section	0.14 ... 2.5 mm²
Rated current	10 A
Rated voltage	250 V
Rated impulse voltage	4 kV
Pollution degree	3
Rated voltage acc. to UL	600 V
Rated voltage acc. to CSA	600 V
Insulation resistance	>10 <sup>10</sup> Ω
Tightening torque	1.2 Nm PE screw M4
Recommended screw driver	Slotted 0.8 x 4.5 PH2



**Pushing Performance**  
Since 1945

## Technical characteristics

Limiting temperature	-40 ... +125 °C
Mating cycles	≥500

## Material properties

Colour (insert)	RAL 7032 (pebble grey)
Material flammability class acc. to UL 94	V-0
RoHS	compliant
ELV status	compliant
China RoHS	e
REACH Annex XVII substances	Not contained
REACH ANNEX XIV substances	Not contained
REACH SVHC substances	Not contained
California Proposition 65 substances	Not contained

## Specifications and approvals

Specifications	IEC 60664-1 IEC 61984
UL / CSA	UL 1977 ECBT2.E235076 CSA-C22.2 No. 182.3 ECBT8.E235076
Approvals	DNV GL

## Commercial data

Packaging size	1
Net weight	29.7 g
Country of origin	China
European customs tariff number	85366990
GTIN	5713140163119
eCl@ss	27440205 Contact insert for industrial connectors
ETIM	EC000438
UNSPSC 24.0	39121522