



Pushing Performance
Since 1945

Han F+B 4/4-M

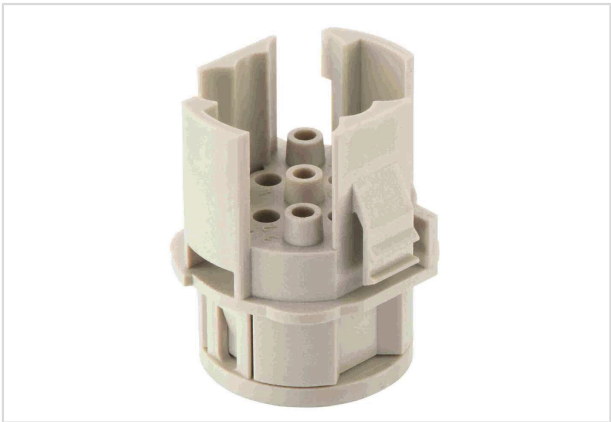


Image is for illustration purposes only. Please refer to product description.

Part number	09 15 508 3001
Specification	Han F+B 4/4-M
HARTING eCatalogue	https://harting.com/09155083001

Identification

Category	Inserts
Series	Han® F+B

Version

Termination method	Crimp termination
Gender	Male
Number of contacts	8
Number of signal contacts	4
Number of power contacts	4
PE contact	Yes
Details	Please order crimp contacts separately.
	4x Han E®
	4x Han D®

Details	The connector series Han® F+B equipped with all contacts may be used for voltages up to 400 V, pollution degree 3. A modified contact loading arrangement only with 4 + PE Han E® power contacts permits use up to 500 V also in the same pollution degree.
---------	---

Technical characteristics

Conductor cross-section	0.14 ... 4 mm²
Rated current (signal)	10 A
Rated voltage (signal)	250 V
Rated impulse voltage (signal)	4 kV
Pollution degree (signal)	3



Pushing Performance
Since 1945

Technical characteristics

Rated current (power)	20 A
Rated voltage (power)	400 V
Rated impulse voltage (power)	6 kV
Pollution degree (power)	3
Insulation resistance	$>10^{10} \Omega$
Limiting temperature	-40 ... +125 °C
Mating cycles	$\geq 3,000$
Note on the mating cycles	Mating cycles with other HMC components

Material properties

Material (insert)	Polycarbonate (PC)
Colour (insert)	RAL 7032 (pebble grey)
Material flammability class acc. to UL 94	V-0
RoHS	compliant
ELV status	compliant
China RoHS	e
REACH Annex XVII substances	Not contained
REACH ANNEX XIV substances	Not contained
REACH SVHC substances	Not contained
Fire protection on railway vehicles	EN 45545-2 (2020-08) + A1 (2023-10)
Requirement set with Hazard Levels	R22 (HL 1-3)
	R23 (HL 1-3)

Specifications and approvals

UL / CSA	UL 2237 PVVA2.E318390
----------	-----------------------

Commercial data

Packaging size	1
Net weight	10.88 g
Country of origin	Germany
European customs tariff number	85366990
GTIN	5713140023659
eCl@ss	27440205 Contact insert for industrial connectors
ETIM	EC000438



Pushing Performance
Since 1945

Commercial data

UNSPSC 24.0

39121522
