

Han Domino RJ45 cube, IDC cat5 M.1

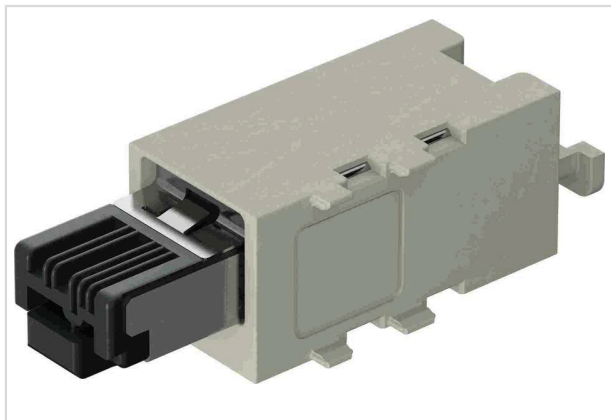


Image is for illustration purposes only. Please refer to product description.

| | |
|--------------------|---|
| Part number | 09 14 945 1003 |
| Specification | Han Domino RJ45 cube, IDC cat5 M.1 |
| HARTING eCatalogue | https://harting.com/09149451003 |

Identification

| | |
|---------------------------|-----------------------|
| Category | Modules |
| Series | Han-Modular® |
| Type of module | Han® Domino RJ45 Cube |
| Size of the module | Domino module |
| Description of the module | Small tab |

Version

| | |
|--------------------|---|
| Termination method | IDC insulation displacement termination |
| Gender | Male |
| Shielding | Shielded |
| Number of contacts | 4 |

Technical characteristics

| | |
|-------------------------------|------------------------------|
| Conductor cross-section [AWG] | AWG 24 ... AWG 22 |
| Wire outer diameter | ≤1.6 mm |
| Rated current | 1 A |
| Rated voltage | 50 V |
| Rated impulse voltage | 0.8 kV |
| Pollution degree | 3 |
| Transmission characteristics | Cat. 5 Class D up to 100 MHz |
| Data rate | 10 Mbit/s 100 Mbit/s |
| Insulation resistance | >10 ¹⁰ Ω |



Pushing Performance
Since 1945

Technical characteristics

| | |
|----------------------|----------------|
| Limiting temperature | -40 ... +70 °C |
| Mating cycles | ≥500 |

Material properties

| | |
|---|--------------------------------------|
| Material (insert) | Polyamide (PA) Polycarbonate (PC) |
| Colour (insert) | RAL 7032 (pebble grey) |
| Material flammability class acc. to UL 94 | V-0 |
| RoHS | compliant |
| ELV status | compliant |
| China RoHS | e |
| REACH Annex XVII substances | Not contained |
| REACH ANNEX XIV substances | Not contained |
| REACH SVHC substances | Not contained |
| California Proposition 65 substances | Not contained |

Specifications and approvals

| | |
|----------------|--|
| Specifications | IEC 60664-1 IEC 61984 IEC 61373 Category 1 Class B |
|----------------|--|

Commercial data

| | |
|--------------------------------|--|
| Packaging size | 1 |
| Country of origin | Romania |
| European customs tariff number | 85366990 |
| GTIN | 5713140399969 |
| eCl@ss | 27440218 Module for industrial connectors (data) |
| ETIM | EC000438 |
| UNSPSC 24.0 | 39121552 |