

## Han Domino RJ45 cube for patch cable M.1

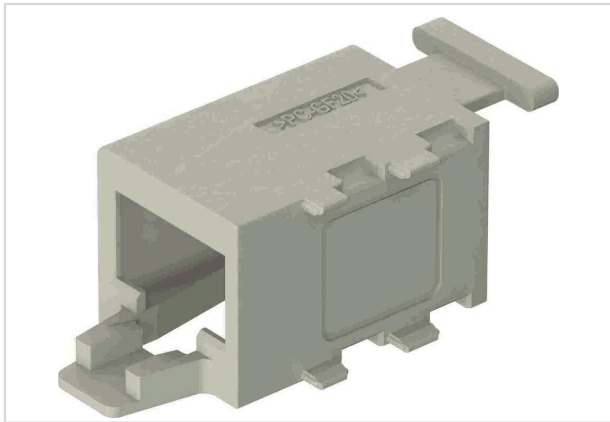


Image is for illustration purposes only. Please refer to product description.

Part number	09 14 945 1001
Specification	Han Domino RJ45 cube for patch cable M.1
HARTING eCatalogue	<a href="https://harting.com/09149451001">https://harting.com/09149451001</a>

### Identification

Category	Modules
Series	Han-Modular®
Type of module	Han® Domino RJ45 Cube
Size of the module	Domino module
Description of the module	Adapter for patch cable Small tab

### Version

Gender	Male
--------	------

### Technical characteristics

Insulation resistance	$>10^{10} \Omega$
Limiting temperature	-40 ... +125 °C
Mating cycles	$\geq 500$

### Material properties

Material (insert)	Polycarbonate (PC)
Colour (insert)	RAL 7032 (pebble grey)
Material flammability class acc. to UL 94	V-0
RoHS	compliant
ELV status	compliant
China RoHS	e
REACH Annex XVII substances	Not contained



**Pushing Performance**  
Since 1945

## Material properties

REACH ANNEX XIV substances	Not contained
REACH SVHC substances	Not contained
California Proposition 65 substances	Not contained
Fire protection on railway vehicles	EN 45545-2 (2020-08) + A1 (2023-10)
Requirement set with Hazard Levels	R22 (HL 1-3)
	R23 (HL 1-3)

## Specifications and approvals

Specifications	IEC 60664-1
	IEC 61984
	IEC 61373 Category 1 Class B

## Commercial data

Packaging size	2
Net weight	2.36 g
Country of origin	Romania
European customs tariff number	85366990
GTIN	5713140396913
eCl@ss	27440207 Adapter for industrial connectors (module/contact insert)
ETIM	EC002312
UNSPSC 24.0	39121469