

Han Domino M12 GND cube (M.2)

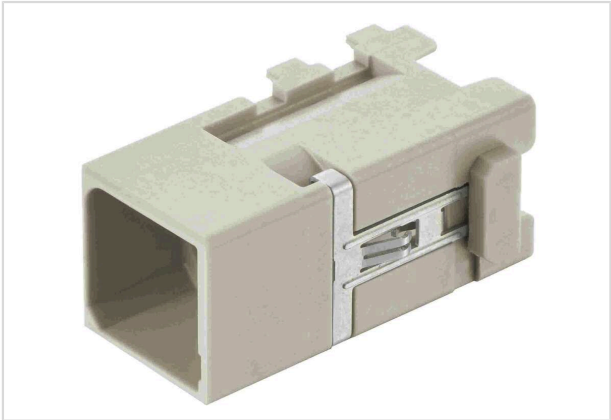


Image is for illustration purposes only. Please refer to product description.

Part number	09 14 921 2002
Specification	Han Domino M12 GND cube (M.2)
HARTING eCatalogue	https://harting.com/09149212002

Identification

Category	Modules
Series	Han-Modular®
Type of module	Han® Domino M12 Cube
Size of the module	Domino module
Description of the module	Large Tab

Version

Gender	Male
Shielding	Shielded
Number of contacts	1
Details	With additional shield connection to the hinged frame Please order insert separately.

Technical characteristics

Limiting temperature	-40 ... +85 °C
Mating cycles	≥500

Material properties

Material (insert)	Polycarbonate (PC)
Colour (insert)	RAL 7032 (pebble grey)
Material flammability class acc. to UL 94	V-0
RoHS	compliant
ELV status	compliant



Pushing Performance
Since 1945

Material properties

China RoHS	e
REACH Annex XVII substances	Not contained
REACH ANNEX XIV substances	Not contained
REACH SVHC substances	Not contained
California Proposition 65 substances	Not contained
Fire protection on railway vehicles	EN 45545-2 (2020-08) + A1 (2023-10)
Requirement set with Hazard Levels	R22 (HL 1-3) R23 (HL 1-3)

Specifications and approvals

Specifications	IEC 60664-1 IEC 61984 IEC 61373 Category 2
UL / CSA	UL 1977 ECBT2.E235076 CSA-C22.2 No. 182.3 ECBT8.E235076

Commercial data

Packaging size	2
Net weight	4.25 g
Country of origin	Romania
European customs tariff number	85366990
GTIN	5713140185241
eCl@ss	27440207 Adapter for industrial connectors (module/contact insert)
ETIM	EC002312
UNSPSC 24.0	39121469