

## Han Domino HD cube, crimp (M.2)

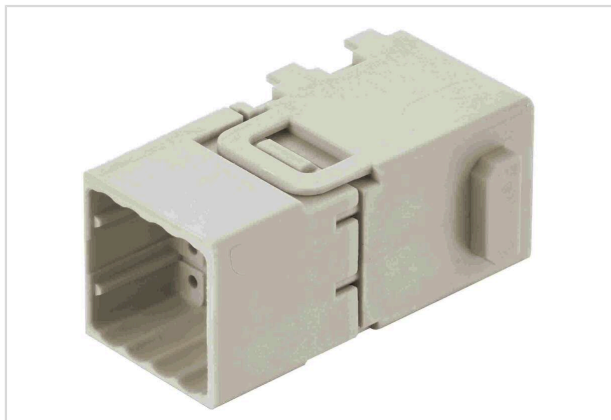


Image is for illustration purposes only. Please refer to product description.

Part number	09 14 916 2001
Specification	Han Domino HD cube, crimp (M.2)
HARTING eCatalogue	<a href="https://harting.com/09149162001">https://harting.com/09149162001</a>

### Identification

Category	Modules
Series	Han-Modular®
Type of module	Han® Domino High Density Cube
Size of the module	Domino module
Description of the module	Large Tab

### Version

Termination method	Crimp termination
Gender	Male
Number of contacts	16
Details	Please order crimp contacts separately.

### Technical characteristics

Conductor cross-section	0.08 ... 0.52 mm²
Wire outer diameter	≤2.3 mm
Rated current	4 A
Rated voltage	32 V
Rated impulse voltage	0.8 kV
Pollution degree	3
Rated voltage acc. to UL	30 V
Insulation resistance	>10 <sup>10</sup> Ω
Limiting temperature	-40 ... +125 °C
Mating cycles	≥10,000



**Pushing Performance**  
Since 1945

## Technical characteristics

Note on the mating cycles	Mating cycles with other HMC components
---------------------------	---

## Material properties

Material (insert)	Polycarbonate (PC)
Colour (insert)	RAL 7032 (pebble grey)
Material flammability class acc. to UL 94	V-0
RoHS	compliant
ELV status	compliant
China RoHS	e
REACH Annex XVII substances	Not contained
REACH ANNEX XIV substances	Not contained
REACH SVHC substances	Not contained
California Proposition 65 substances	Not contained
Fire protection on railway vehicles	EN 45545-2 (2020-08) + A1 (2023-10)
Requirement set with Hazard Levels	R22 (HL 1-3) R23 (HL 1-3)

## Specifications and approvals

Specifications	IEC 60664-1 IEC 61984 IEC 61373 Category 2
UL / CSA	UL 1977 ECBT2.E235076 CSA-C22.2 No. 182.3 ECBT8.E235076

## Commercial data

Packaging size	2
Net weight	4.04 g
Country of origin	Romania
European customs tariff number	85366990
GTIN	5713140185180
eCl@ss	27440217 Module for industrial connectors (power/signals)
ETIM	EC000438
UNSPSC 24.0	39121552