

## Han Domino Dummy cube (MF.2)

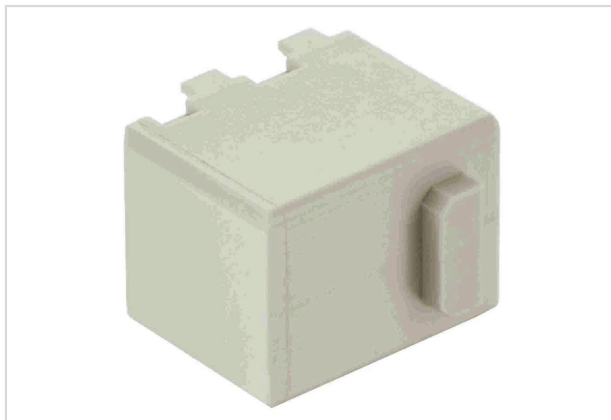


Image is for illustration purposes only. Please refer to product description.

Part number	09 14 900 2000
Specification	Han Domino Dummy cube (MF.2)
HARTING eCatalogue	<a href="https://harting.com/09149002000">https://harting.com/09149002000</a>

### Identification

Category	Modules
Series	Han-Modular®
Type of module	Han® Domino Dummy Cube
Size of the module	Domino module
Description of the module	Large Tab

### Version

Gender	Male
	Female

### Technical characteristics

Limiting temperature	-40 ... +125 °C
Mating cycles	≥10,000
Note on the mating cycles	Mating cycles with other HMC components

### Material properties

Material (insert)	Polycarbonate (PC)
Colour (insert)	RAL 7032 (pebble grey)
Material flammability class acc. to UL 94	V-0
RoHS	compliant
ELV status	compliant
China RoHS	e
REACH Annex XVII substances	Not contained



**Pushing Performance**  
Since 1945

## Material properties

REACH ANNEX XIV substances	Not contained
REACH SVHC substances	Not contained
Fire protection on railway vehicles	EN 45545-2 (2020-08) + A1 (2023-10)
Requirement set with Hazard Levels	R22 (HL 1-3)
	R23 (HL 1-3)

## Specifications and approvals

Specifications	IEC 61373 Category 2
UL / CSA	UL 1977 ECBT2.E235076
	CSA-C22.2 No. 182.3 ECBT8.E235076

## Commercial data

Packaging size	2
Net weight	3.5 g
Country of origin	Romania
European customs tariff number	85366990
GTIN	5713140185326
eCl@ss	27440392 Connector (accessories)
ETIM	EC002939
UNSPSC 24.0	39121400