

Han Domino Dummy cube (MF.1)

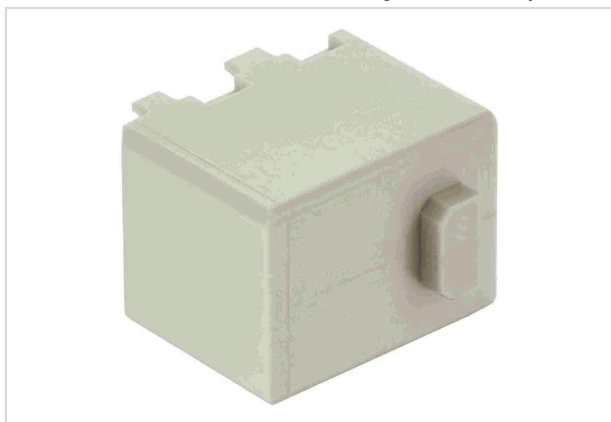


Image is for illustration purposes only. Please refer to product description.

Part number	09 14 900 1000
Specification	Han Domino Dummy cube (MF.1)
HARTING eCatalogue	https://harting.com/09149001000

Identification

Category	Modules
Series	Han-Modular®
Type of module	Han® Domino Dummy Cube
Size of the module	Domino module
Description of the module	Small tab

Version

Gender	Male
	Female

Technical characteristics

Limiting temperature	-40 ... +125 °C
Mating cycles	≥10,000
Note on the mating cycles	Mating cycles with other HMC components

Material properties

Material (insert)	Polycarbonate (PC)
Colour (insert)	RAL 7032 (pebble grey)
Material flammability class acc. to UL 94	V-0
RoHS	compliant
ELV status	compliant
China RoHS	e
REACH Annex XVII substances	Not contained



Pushing Performance
Since 1945

Material properties

REACH ANNEX XIV substances	Not contained
REACH SVHC substances	Not contained
Fire protection on railway vehicles	EN 45545-2 (2020-08) + A1 (2023-10)
Requirement set with Hazard Levels	R22 (HL 1-3)
	R23 (HL 1-3)

Specifications and approvals

Specifications	IEC 61373 Category 2
UL / CSA	UL 1977 ECBT2.E235076
	CSA-C22.2 No. 182.3 ECBT8.E235076

Commercial data

Packaging size	2
Net weight	3 g
Country of origin	Romania
European customs tariff number	85366990
GTIN	5713140185319
eCl@ss	27440392 Connector (accessories)
ETIM	EC002939
UNSPSC 24.0	39121400