

Han 15E Male Multiplier Block

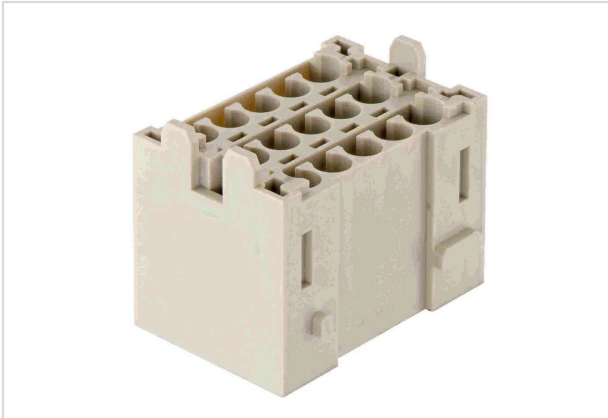


Image is for illustration purposes only. Please refer to product description.

Part number	09 14 015 3001
Specification	Han 15E Male Multiplier Block
HARTING eCatalogue	https://harting.com/09140153001

Identification

Category	Inserts
Series	Han-Yellock®
Element	Multiplier block

Version

Termination method	Crimp termination
Gender	Male
Number of contacts	15
Details	Please order crimp contacts separately.

Technical characteristics

Conductor cross-section	0.14 ... 4 mm ²
Rated current	16 A
Rated voltage	500 V
Rated impulse voltage	6 kV
Pollution degree	3
Insulation resistance	>10 ¹⁰ Ω
Limiting temperature	-40 ... +125 °C
Mating cycles	≥500

Material properties

Material (insert)	Polycarbonate (PC)
Colour (insert)	RAL 7032 (pebble grey)



Pushing Performance
Since 1945

Material properties

Material flammability class acc. to UL 94	V-0
RoHS	compliant
ELV status	compliant
China RoHS	e
REACH Annex XVII substances	Not contained
REACH ANNEX XIV substances	Not contained
REACH SVHC substances	Not contained
Fire protection on railway vehicles	EN 45545-2 (2020-08) + A1 (2023-10)
Requirement set with Hazard Levels	R22 (HL 1-3)
	R23 (HL 1-3)

Commercial data

Packaging size	1
Net weight	33.3 g
Country of origin	Germany
European customs tariff number	85366990
GTIN	5713140021013
eCl@ss	27440205 Contact insert for industrial connectors
ETIM	EC000438
UNSPSC 24.0	39121522