



Pushing Performance
Since 1945

Han Megabit insert male 1 Entry

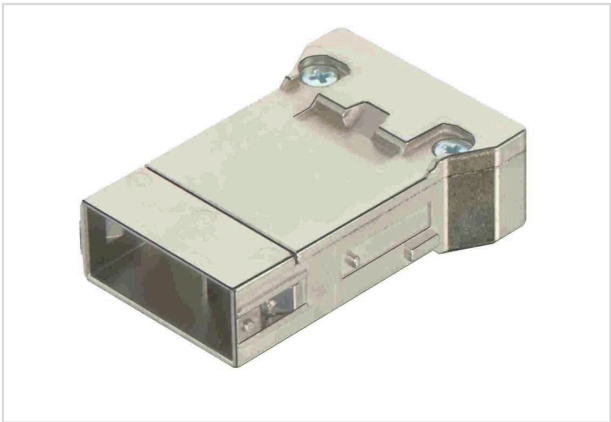


Image is for illustration purposes only. Please refer to product description.

Part number	09 14 008 3021
Specification	Han Megabit insert male 1 Entry
HARTING eCatalogue	https://harting.com/09140083021

Identification

Category	Modules
Type of module	Han® Megabit module
Description of the module	Insert
	2x 4 contacts
	One entry

Version

Termination method	Crimp termination
Gender	Male
Number of contacts	8
further contacts	+ shielding
Details	Please order crimp contacts separately.
	Please order adapter module separately.
Details	Not suitable for hoods/housings low construction as well as Han-Modular® Eco, Han-Modular® Compact and Han-Modular® Twin.

Technical characteristics

Conductor cross-section	0.14 ... 2.5 mm²
Wire outer diameter	≤3.5 mm
Rated current	10 A
Rated voltage	50 V
Rated impulse voltage	0.8 kV
Pollution degree	3



Pushing Performance
Since 1945

Technical characteristics

Rated current acc. to UL	2 A AWG 26 ... AWG 20
	6 A AWG 18
	8 A AWG 16 ... AWG 14
Rated voltage acc. to UL	30 V
Transmission characteristics	Cat. 5 Class D up to 100 MHz
Data rate	100 Mbit/s
Contact resistance, shielding	≤100 mΩ
Limiting temperature	-40 ... +85 °C
Mating cycles	≥500

Material properties

Material (insert)	Polycarbonate (PC)
Colour (insert)	RAL 7032 (pebble grey)
Material (shielding)	Zinc die-cast, nickel-plated
Material flammability class acc. to UL 94	V-0
RoHS	compliant
ELV status	compliant
China RoHS	e
REACH Annex XVII substances	Not contained
REACH ANNEX XIV substances	Not contained
REACH SVHC substances	Not contained
California Proposition 65 substances	Not contained
Fire protection on railway vehicles	EN 45545-2 (2020-08) + A1 (2023-10)
Requirement set with Hazard Levels	R22 (HL 1-3)
	R23 (HL 1-3)

Specifications and approvals

Specifications	IEC 60664-1
	IEC 61984
	IEC 61373 Category 2
UL / CSA	UL 1977 ECBT2.E235076
	CSA-C22.2 No. 182.3 ECBT8.E235076
Approvals	DNV GL

Commercial data

Packaging size	1
----------------	---



Pushing Performance
Since 1945

Commercial data

Net weight	44 g
Country of origin	Romania
European customs tariff number	85389099
GTIN	5713140020696
eCl@ss	27440218 Module for industrial connectors (data)
ETIM	EC000438
UNSPSC 24.0	39121552