

Han® CC Push-In module male 1,5-6mm²

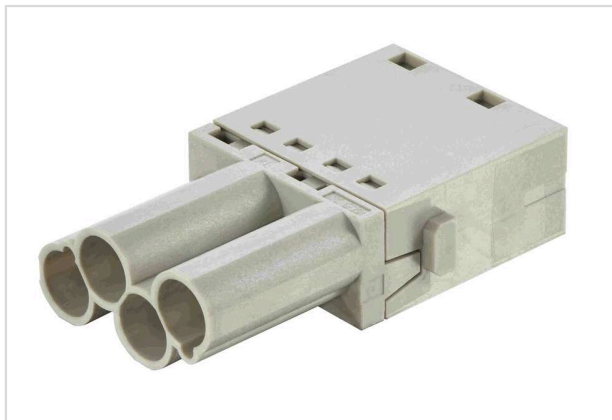


Image is for illustration purposes only. Please refer to product description.

Part number	09 14 004 5001
Specification	Han® CC Push-In module male 1,5-6mm²
HARTING eCatalogue	https://harting.com/09140045001

Identification

Category	Modules
Series	Han-Modular®
Type of module	Han® CC Protected module
Size of the module	Single module
Features	Finger safe contacts

Version

Termination method	Push-In
Gender	Male
Number of contacts	4

Technical characteristics

Conductor cross-section	1.5 ... 6 mm²
Wire outer diameter	≤6.3 mm
Rated current	40 A
Rated voltage	830 V
Rated impulse voltage	8 kV
Pollution degree	3
Insulation resistance	>10 ¹⁰ Ω
Stripping length	12 mm
Limiting temperature	-40 ... +125 °C
Mating cycles	≥500



Pushing Performance
Since 1945

Technical characteristics

Degree of protection acc. to IEC 60529	IP20 unmated condition
--	------------------------

Material properties

Material (insert)	Polycarbonate (PC)
Colour (insert)	RAL 7032 (pebble grey)
Material flammability class acc. to UL 94	V-0
RoHS	compliant
ELV status	compliant
China RoHS	e
REACH Annex XVII substances	Not contained
REACH ANNEX XIV substances	Not contained
REACH SVHC substances	Not contained
California Proposition 65 substances	Not contained
Fire protection on railway vehicles	EN 45545-2 (2020-08) + A1 (2023-10)
Requirement set with Hazard Levels	R22 (HL 1-3) R23 (HL 1-3)

Specifications and approvals

Specifications	IEC 60664-1 IEC 61984 IEC 61373 Category 2 IEC 60352-7
----------------	---

Commercial data

Packaging size	2
Net weight	31.5 g
Country of origin	Romania
European customs tariff number	85389099
GTIN	5713140425569
eCl@ss	27440217 Module for industrial connectors (power/signals)
ETIM	EC000438
UNSPSC 24.0	39121552