

Han RJ45 module, male for plugs

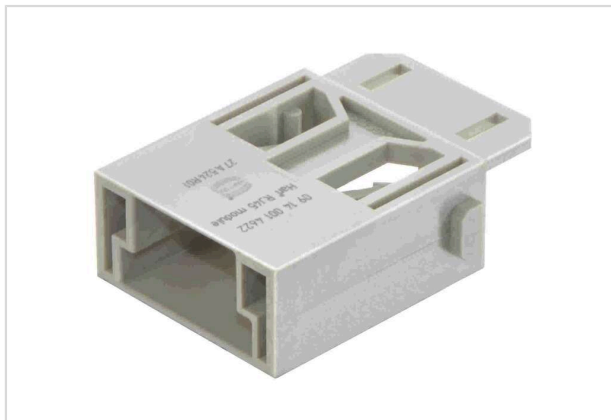


Image is for illustration purposes only. Please refer to product description.

| | |
|--------------------|---|
| Part number | 09 14 001 4622 |
| Specification | Han RJ45 module, male for plugs |
| HARTING eCatalogue | https://harting.com/09140014622 |

Identification

| | |
|--------------------|------------------|
| Category | Modules |
| Series | Han-Modular® |
| Type of module | Han® RJ45 module |
| Size of the module | Single module |

Version

| | |
|--------------------|---------------------|
| Gender | Male |
| Number of contacts | 8 |
| Details | for data connectors |

Technical characteristics

| | |
|--------------------------|-------------------|
| Rated current | 1 A |
| Rated voltage | 50 V |
| Rated impulse voltage | 0.8 kV |
| Pollution degree | 3 |
| Rated voltage acc. to UL | 30 V |
| Insulation resistance | $>10^{10} \Omega$ |
| Limiting temperature | -40 ... +70 °C |
| Mating cycles | ≥ 500 |

Material properties

| | |
|-------------------|------------------------|
| Material (insert) | Polycarbonate (PC) |
| Colour (insert) | RAL 7032 (pebble grey) |



Pushing Performance
Since 1945

Material properties

| | |
|---|-------------------------------------|
| Material flammability class acc. to UL 94 | V-0 |
| RoHS | compliant |
| ELV status | compliant |
| China RoHS | e |
| REACH Annex XVII substances | Not contained |
| REACH ANNEX XIV substances | Not contained |
| REACH SVHC substances | Not contained |
| California Proposition 65 substances | Not contained |
| Fire protection on railway vehicles | EN 45545-2 (2020-08) + A1 (2023-10) |
| Requirement set with Hazard Levels | R22 (HL 1-3) R23 (HL 1-3) |

Specifications and approvals

| | |
|----------------|--------------------------|
| Specifications | IEC 60664-1 IEC 61984 |
| UL / CSA | UL 1977 ECBT2.E235076 |
| Approvals | DNV GL |

Commercial data

| | |
|--------------------------------|--|
| Packaging size | 1 |
| Net weight | 6 g |
| Country of origin | Germany |
| European customs tariff number | 85389099 |
| GTIN | 5713140019430 |
| eCl@ss | 27440207 Adapter for industrial connectors (module/contact insert) |
| ETIM | EC002312 |
| UNSPSC 24.0 | 39121469 |