

## Han 200A axial module, male 40-70 mm<sup>2</sup>

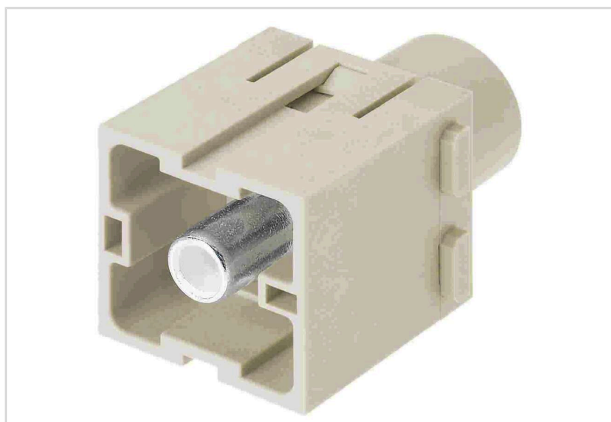


Image is for illustration purposes only. Please refer to product description.

Part number	09 14 001 2662
Specification	Han 200A axial module, male 40-70 mm <sup>2</sup>
HARTING eCatalogue	<a href="https://harting.com/09140012662">https://harting.com/09140012662</a>

### Identification

Category	Modules
Series	Han-Modular®
Type of module	Han® 200 A module
Size of the module	Double module

### Version

Termination method	Axial screw termination
Gender	Male
Number of contacts	1

### Technical characteristics

Conductor cross-section	40 ... 70 mm <sup>2</sup>
Wire outer diameter	≤16 mm
Rated current	200 A
Rated voltage	1,000 V
Rated impulse voltage	8 kV
Pollution degree	3
Rated voltage acc. to UL	600 V
Insulation resistance	>10 <sup>10</sup> Ω
Contact resistance	≤0.2 mΩ
Stripping length	16 ... 17 mm
Tightening torque	9 ... 10 Nm
Limiting temperature	-40 ... +125 °C



**Pushing Performance**  
Since 1945

## Technical characteristics

Mating cycles	≥500
---------------	------

## Material properties

Material (insert)	Polycarbonate (PC)
Colour (insert)	RAL 7032 (pebble grey)
Material (contacts)	Copper alloy
Surface (contacts)	Silver plated
Material flammability class acc. to UL 94	V-0
RoHS	compliant with exemption
RoHS exemptions	6(c): Copper alloy containing up to 4 % lead by weight
ELV status	compliant with exemption
China RoHS	50
REACH Annex XVII substances	Not contained
REACH ANNEX XIV substances	Not contained
REACH SVHC substances	Yes
REACH SVHC substances	Lead
ECHA SCIP number	5dbb3851-b94e-4e88-97a1-571845975242
California Proposition 65 substances	Yes
California Proposition 65 substances	Lead Nickel
Fire protection on railway vehicles	EN 45545-2 (2020-08) + A1 (2023-10)
Requirement set with Hazard Levels	R22 (HL 1-3) R23 (HL 1-3)

## Specifications and approvals

Specifications	IEC 60664-1 IEC 61984 IEC 61373 Category 1 Class B
UL / CSA	UL 1977 ECBT2.E235076
Approvals	DNV GL

## Commercial data

Packaging size	1
Net weight	60 g
Country of origin	Romania



**Pushing Performance**  
Since 1945

Commercial data

European customs tariff number	85359000
GTIN	5713140019133
eCl@ss	27440217 Module for industrial connectors (power/signals)
ETIM	EC000438
UNSPSC 24.0	39121552