

Han 1A LC-M

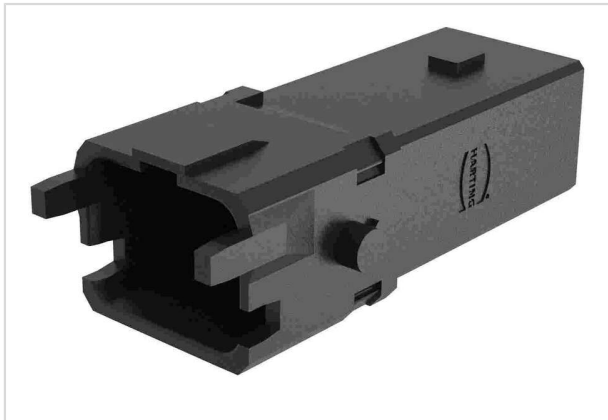


Image is for illustration purposes only. Please refer to product description.

Part number	09 10 002 4701
Specification	Han 1A LC-M
HARTING eCatalogue	https://harting.com/09100024701

Identification

Category	Inserts
Series	Han® 1A
Features	Suitable for LC contacts

Version

Gender	Male
Size	1 A
Number of contacts	2
Locking type	Single locking lever
Details	Please order LC contacts separately. Please order locking lever separately. Order separately the hoods/housings for an IP65 performance.
Details	A Han® 1A configuration that only consists of inserts (with or without strain relief, 09 10 000 5300) is an unenclosed connector according to IEC 61984.

Technical characteristics

Limiting temperature	-30 ... +85 °C
Mating cycles	≥100
Degree of protection acc. to IEC 60529	IP20

Material properties

Material (insert)	Polyamide (PA)
Colour (insert)	RAL 9005 (jet black)
Material flammability class acc. to UL 94	V-0



Pushing Performance
Since 1945

Material properties

RoHS	compliant
ELV status	compliant
China RoHS	e
REACH Annex XVII substances	Not contained
REACH ANNEX XIV substances	Not contained
REACH SVHC substances	Not contained
California Proposition 65 substances	Not contained
Fire protection on railway vehicles	EN 45545-2 (2020-08) + A1 (2023-10)
Requirement set with Hazard Levels	R22 (HL 1-3) R23 (HL 1-3)

Specifications and approvals

Specifications	EN 45545-2 Fire protection on railway vehicles
----------------	--

Commercial data

Packaging size	1
Net weight	11.34 g
Country of origin	Romania
European customs tariff number	85389099
GTIN	5713140481169
eCl@ss	27440219 Module for industrial connectors (FO)
ETIM	EC000438
UNSPSC 24.0	39121552