

Unit Fan

SKU:U063



60mm MINI FAN



Description

Unit Fan is a power drive unit based on an N20 DC motor. It is controlled via GPIO level or PWM signals, delivering a no-load output shaft speed of up to 8800 RPM and supporting precise start/stop control as well as stepless speed regulation. The unit communicates through a Grove HY2.0-4P interface, integrates efficient driving and protection circuits, and adopts a LEGO-compatible hole design for flexible integration with LEGO structures or screw mounting. It is suitable for robot drive systems, model power applications, active cooling, and various motion control scenarios.

Features

- Motor Type: N20 DC Motor
- No-Load Speed: 8800 RPM
- Rotation Direction: Single Direction
- Control Method: GPIO / PWM Speed Control
- Communication Interface: Grove HY2.0-4P
- 2 x LEGO-Compatible Holes
- Development Platform
 - UiFlow1

- UiFlow2
- Arduino IDE

Includes

- 1 x Unit Fan
- 1 x HY2.0-4P Grove cable (20cm)
- 2 x Propellers

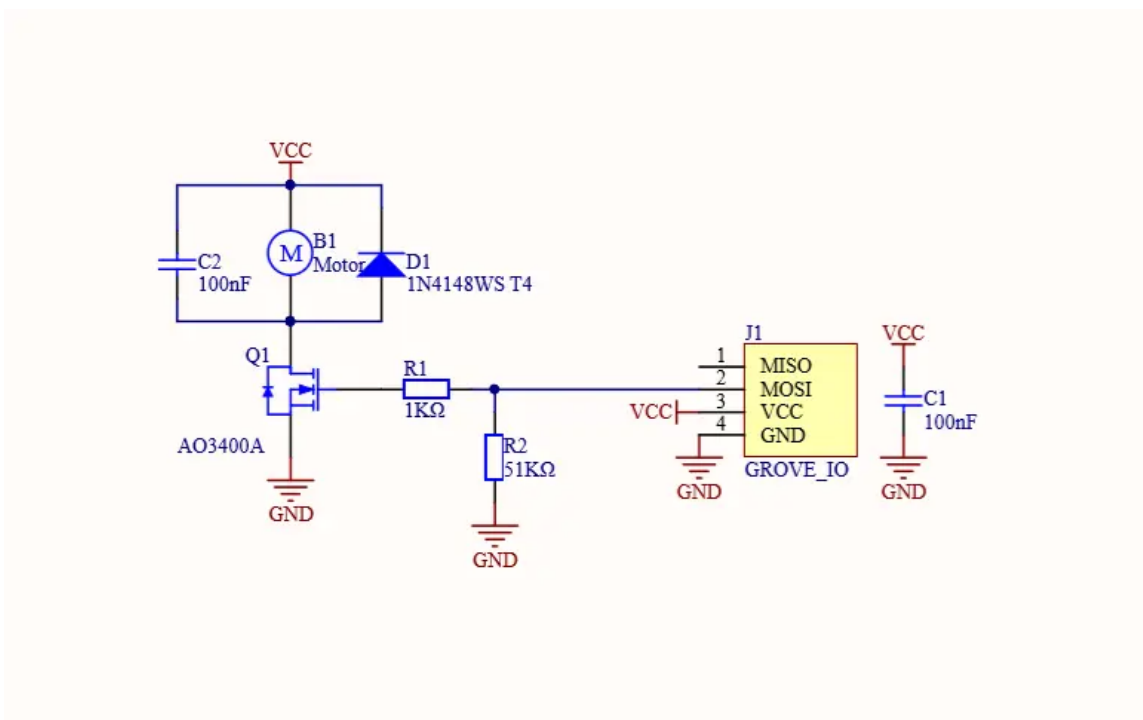
Applications

- Motion control

Specifications

| Specification | Parameter |
|----------------|-----------------------|
| Product Size | 32.0 x 24.0 x 12.2mm |
| Product Weight | 9.3g |
| Package Size | 138.0 x 93.0 x 13.2mm |
| Gross Weight | 15.2g |

Schematics

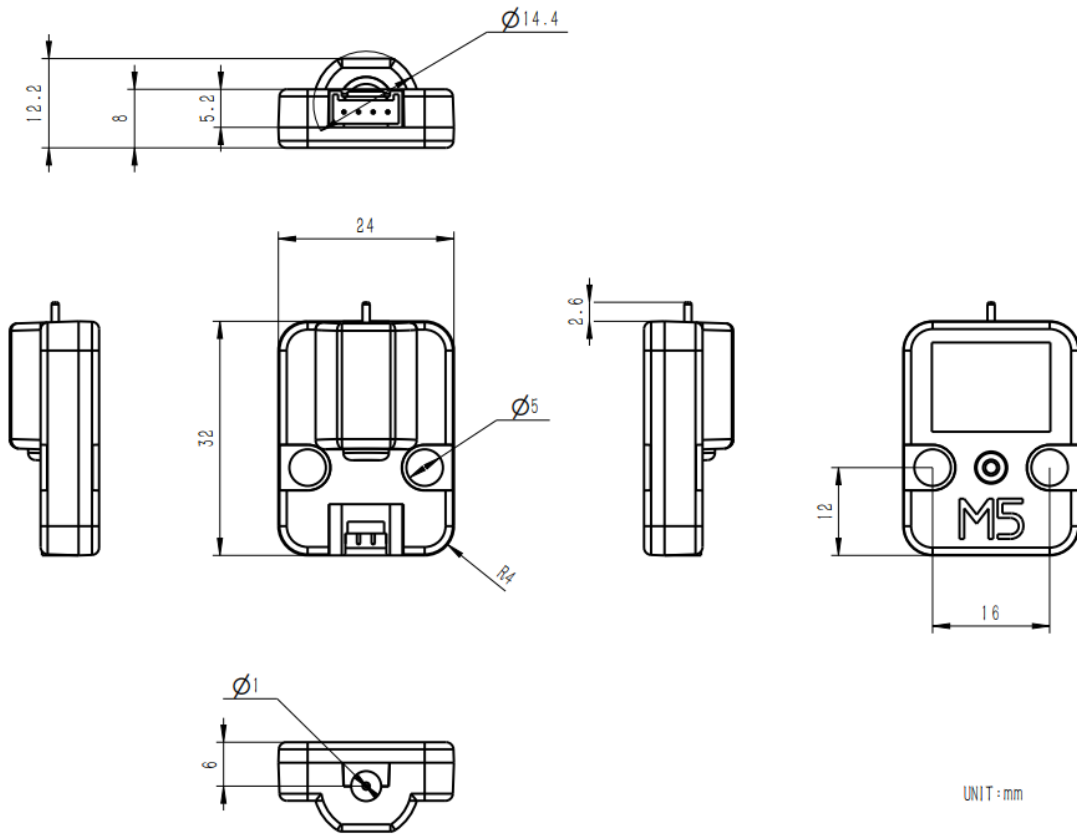


PinMap

Unit Fan

| | | | | |
|----------|-------|-----|--------|-------|
| HY2.0-4P | Black | Red | Yellow | White |
| PORT.B | GND | 5V | DIN | NC |

Model Size



構造

- [Unit Fan 構造ファイル](#)

Softwares

Arduino

- [Unit Fan Test Example](#)

UiFlow1

- [Unit Fan UiFlow1 Docs](#)

EasyLoader

| Easyloader | Download Link | Remarks |
|--------------------------|--------------------------|---------|
| Unit Fan Test Easyloader | download | / |