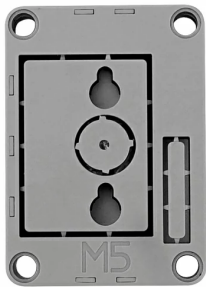
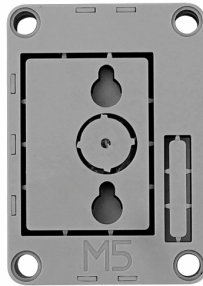
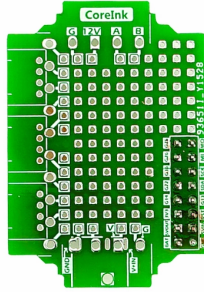
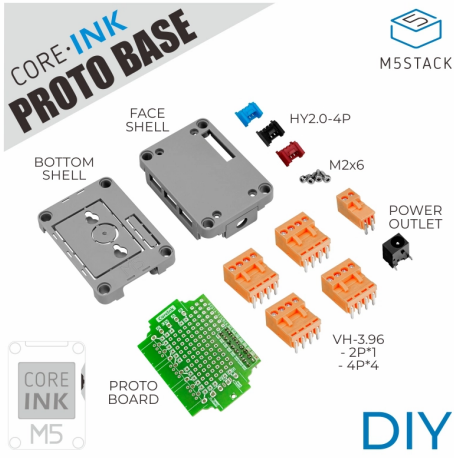


CoreInk Proto Base

SKU:M037



Description

CoreInk Proto Base is a DIY expansion kit designed for the CoreInk main control unit. When stacking this expansion board, the IO bus on the CoreInk main control unit will be extended to the PROTO board via the bottom PIN headers, allowing you to design and build circuits according to your needs. The kit also includes various expansion accessories (HY2.0-4P female connectors, 3.96 male/female connectors, DC power connectors, etc.), which can be soldered onto the PROTO board to add standard input/output interfaces to your circuit design. The back hook holes and LEGO-compatible corner holes make it easy to integrate your DIY creation into various structures.

Features

- Compatible with CoreInk
- Prototype circuit design
- Proto board

Includes

- 1 x CoreInk Proto Base (top shell + bottom shell)
- 1 x Hex key
- 3 x HY2.0-4P socket connectors (red x1, blue x1, black x1)
- 4 x HT3.96R-4P pins
- 4 x HT3.96R-4P sockets
- 1 x HT3.96R-2P pin
- 1 x HT3.96R-2P socket
- 1 x DC-044 socket connector
- 4 x M2*6 pan head self-tapping screws
- 1 x PROTO DIP pin header
- 3 x Port covers

Applications

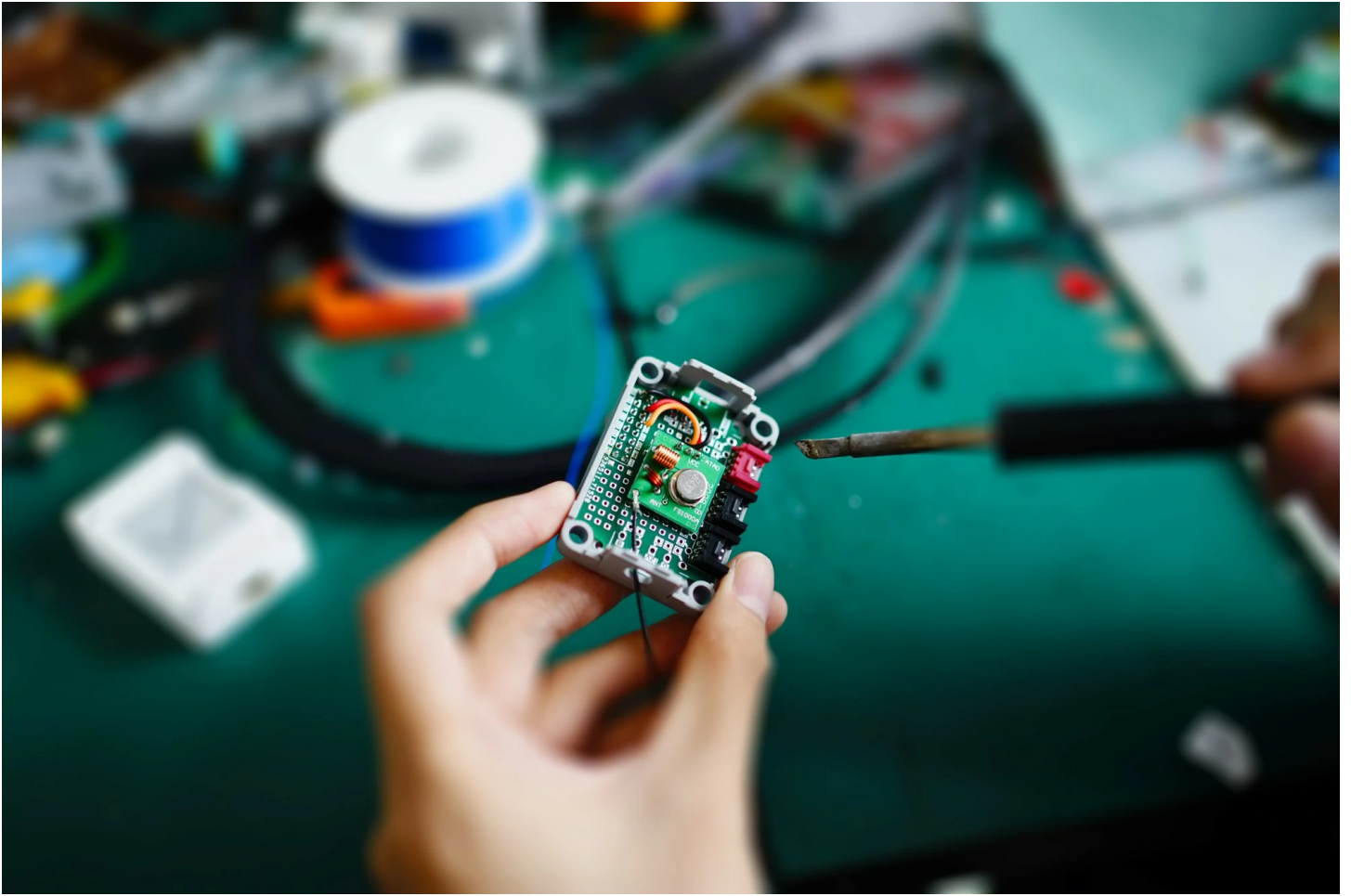
- Experimental circuits
- DIY functional expansion

Specifications

Specification	Parameter
Shell Material	Plastic (PC)
Net Weight	34g
Gross Weight	46g
Product Size	56 x 40 x 16mm
Package Size	83 x 54 x 26mm

| Learn

- The IO bus on the CoreInk main control unit will be extended to the Proto board via PIN headers, allowing you to add your own circuits to achieve different functional expansions.



| PinMap

| CoreInk-Bus

PIN	LEFT	RIGHT	PIN
GND	1	2	BAT
5V_IN	3	4	5V_OUT
EXT_RST	5	6	3V3
G13	7	8	G14
G21	9	10	G22
G18	11	12	G36
G34	13	14	G26
G23	15	16	G25

Video

Integrating a 433MHz RF module with CoreInk Proto Base to achieve smart home control.

[COREINK_PROTO_BASE.mp4](#)