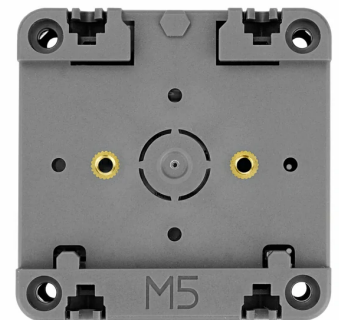
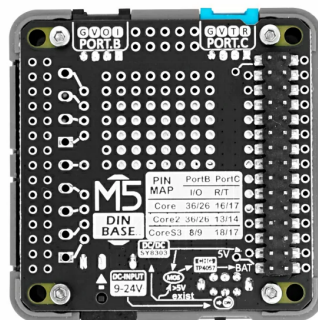
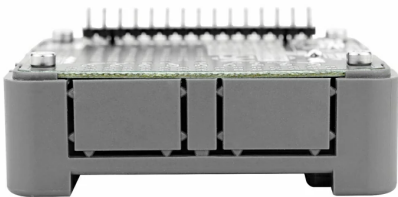
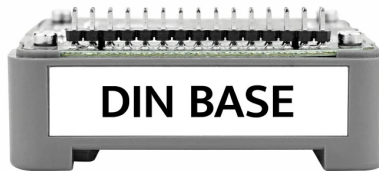
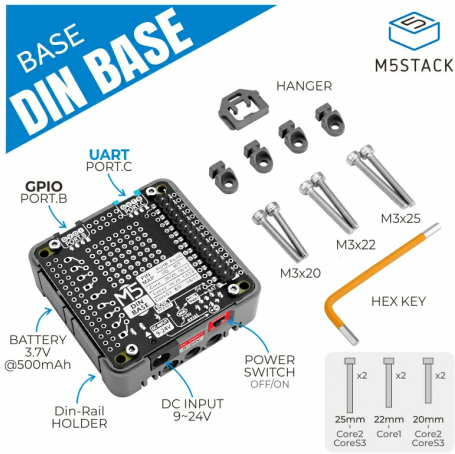


Base DIN

SKU:M132



Description

Base DIN is a “5x5cm” series base specially designed for “DinRail” mounting. It is compatible with **M5Core hosts**, features a built-in 500mAh lithium battery, supports external DC power input (9 ~ 24V), and is equipped with a physical power switch that can completely cut off external power and battery. It reserves PORT.B and PORT.C interfaces. The lower side is equipped with LEGO mounting holes for easy fixing, the bottom supports standard 35mm DinRail, and it also comes with 4 detachable hanging ears, supporting multiple mounting methods. The **Base DIN** has multiple proto pads reserved on the internal PCB for easy DIY customization.

Features

- 1x12P 2.54mm interface
- Port.B and Port.C interfaces
- Power supply options:
 - DC power (9 ~ 24V)
 - 500mAh lithium battery
- Power switch
- Multiple mounting methods:
 - DinRail
 - Hanging ears
 - Two embedded copper nuts at the bottom
 - Three reserved LEGO fixing holes on the side

Includes

- 1 x Base DIN
- 4 x Hanging Ear
- 1 x Buckle
- 1 x Hex Wrench
- 2 x Screws (2 × 25mm for Core2/CoreS3)
- 2 x Screws (2 × 22mm for Core1)
- 2 x Screws (2 × 20mm for Core2/CoreS3)

Applications

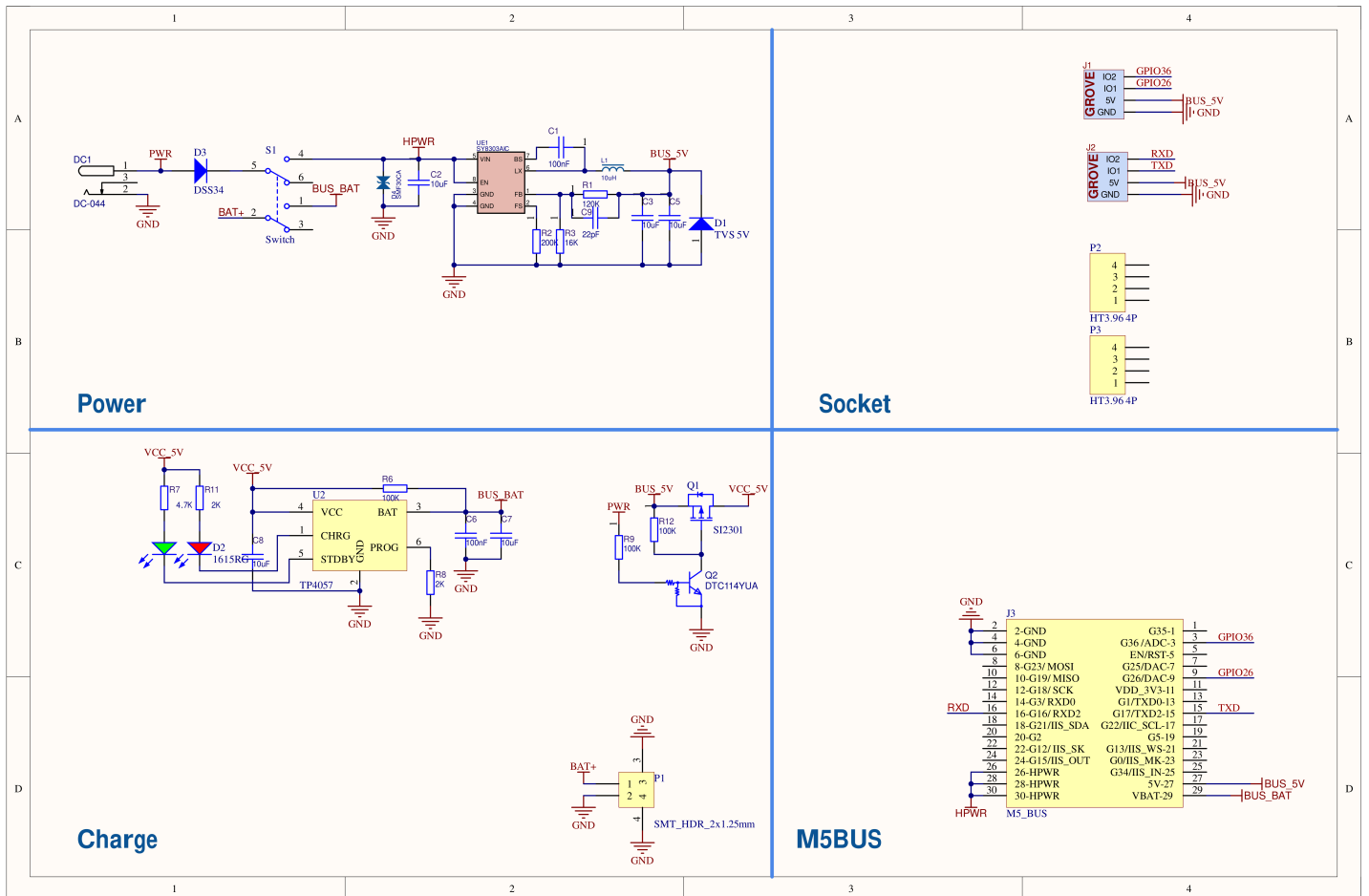
- DIY projects
- Standalone power supply scenarios for Core hosts

Specifications

Specification	Parameter
DC-DC Buck Chip	SY8303AIC
Lithium Charge Chip	TP4057
DC External Power	DC 9 ~ 24V
Battery Capacity	500mAh
Product Size	54.0 x 54.0 x 22.5mm
Product Weight	32.4g
Package Size	95.0 x 66.0 x 26.0mm
Gross Weight	64.5g

Schematics

- Base DIN Schematics PDF



PinMap

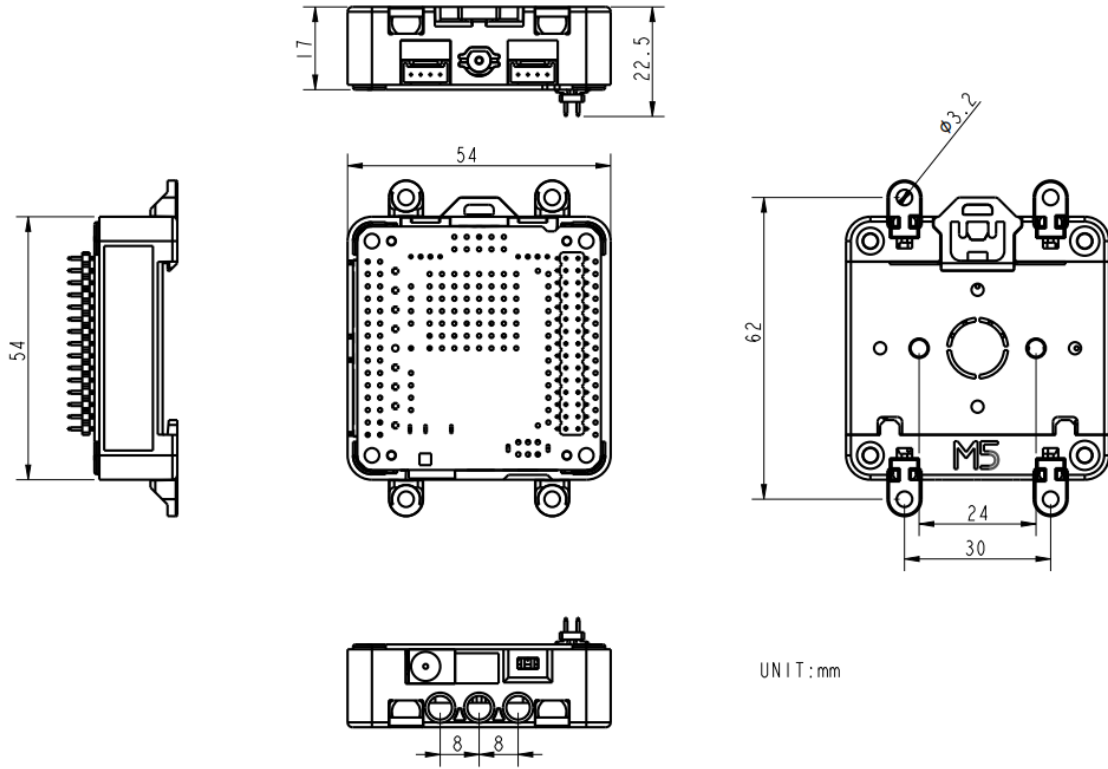
HY2.0-4P

Port	Core	Core2	CoreS3	Note
PORT.B (Black)	G36/G26	G36/G26	G8/G9	I/O
PORT.C (Blue)	G16/G17	G13/G14	G18/G17	RX/TX

M5-Bus

PIN	LEFT	RIGHT	PIN
GND	1	2	NC
GND	3	4	PORT.B
GND	5	6	NC
NC	7	8	NC
NC	9	10	PORT.B
NC	11	12	NC
NC	13	14	NC
PORT.C	15	16	PORT.C
NC	17	18	NC
NC	19	20	NC
NC	21	22	NC
NC	23	24	NC
HPWR	25	26	NC
HPWR	27	28	5V
HPWR	29	30	BAT

Model Size



Structure

- [Base DIN Structure Files](#)

Datasheets

- [Power Manager TP4057](#)
- [SY8303AIC](#)