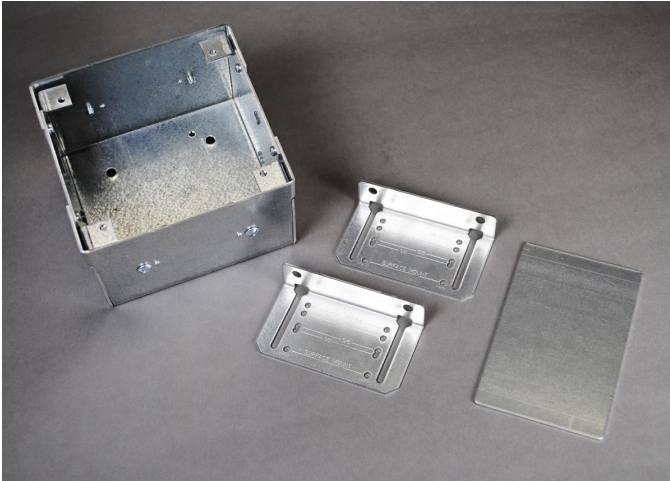




Wiremold WallSource 2-Gang Box, Divider and Mounting Brackets Part No. WSB42-2



Slide-in dividers separate the box for power and communication services. Adjustable mounting brackets offer flexibility to flush mount box in 1/2", 5/8", 1", and 1 1/4" (12.7mm, 15.9mm, 25mm, and 32mm) wall thicknesses. Ordering Data: 4 3/4" L x 5" W x 3 1/4" D (121mm L x 127mm W x 83mm D), 2-Gang, 1/2", 3/4", and 1" trade size KOs. NOTE: Certified to Canadian Safety Standards, for sale in Canada. When ordering, add "C" suffix to part number to denote the Canadian version, i.e., "WSB42-2C".

Features & Benefits

Slide-in dividers separate the box for power and communication services.

Adjustable mounting brackets offer flexibility to flush mount box in 1/2", 5/8", 1", and 1 1/4" (12.7mm, 15.9mm, 25mm, and 32mm) wall thicknesses.

Ordering Data: 4 3/4" L x 5" W x 3 1/4" D (121mm L x 127mm W x 83mm D), 2-Gang, 1/2", 3/4", and 1" trade size KOs.

NOTE: Certified to Canadian Safety Standards, for sale in Canada. When ordering, add "C" suffix to part number to denote the Canadian version, i.e., "WSB42-2C".

Specifications

General Info

Product Line	Wiremold	Color	Silver
UPC Number	786776549027	Country Of Origin	United States
Material	Steel	Product Series	WallSource Series
Installation Location	On Wall	Application Sector	Commercial
Standard	cULus Listed Metallic Outlet Box:File E2961 Guide QCIT.Meets Article 314 of NEC.	Warranty Type	1-Year from Installation or 2-Years from Day of Sale
Type	Wall Box		

Dimensions

Product Width US	5.0 in	Product Weight US	2.25 lb
Product Depth US	3.25 in	Product Length US	4.75 in

