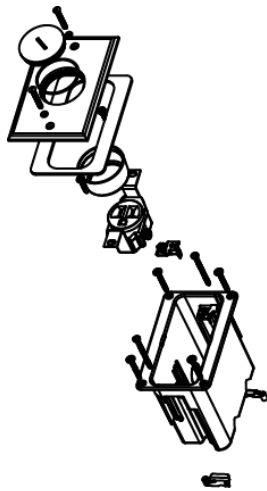




Wiremold
WMFB1SRN Series Single-Gang Floor Box Assembly
Part No. WMFB1SRN



Includes single-gang box, one 15A tamper-resistant receptacle, and nickel cover with one screw plug. For hole cut dimensions, see installation instructions sheet. Box Dimensions: 2 1/8" W x 3 3/4" L x 3 7/8" D (54mm W x 95mm L x 98mm D) Device Plate: 3 1/8" W x 4 15/16" L (79mm W x 125mm L).

Features & Benefits

Includes single-gang box, one 15A tamper-resistant receptacle, and nickel cover with one screw plug.

Box Dimensions: 2 1/8" W x 3 3/4" L x 3 7/8" D (54mm W x 95mm L x 98mm D) Device Plate: 3 1/8" W x 4 15/16" L (79mm W x 125mm L).

For hole cut dimensions, see installation instructions sheet.

Specifications

General Info

Product Line	Wiremold	UPC Number	786564053934
Country Of Origin	Mexico	Material	PVC
Construction	Not Assembled	Cover Style	Surface
Cover Material	Nickel	Application Sector	Commercial, Residential
Standard	cULus Listed Nonmetallic Outlet Boxes: File E143222 Guide QCMZ. Meets Article 314.27(C) of NEC.	Warranty Type	1-Year from Installation or 2-Years from Day of Sale
Type	Floor Box		

Dimensions

Product Width US	2.125 in	Product Weight US	0.95 lb
------------------	----------	-------------------	---------

Product Depth US	3.875 in	Knockout Size	1/2 in, 3/4 in
------------------	----------	---------------	----------------

Listing Agencies / 3rd Party Agencies

cULus ListingNumber	E143222	cULus Listed	Yes
---------------------	---------	--------------	-----

Additional Information

RoHS Compliant	Yes
----------------	-----

Technical Information

Floor Type	Wood	Service Capacity	Single
------------	------	------------------	--------

Minimum Floor Depth	5 in	Box Capacity	1 Gang
---------------------	------	--------------	--------

Cable Entry	Through Floor	Box Type	Recessed
-------------	---------------	----------	----------

Number of Outlets	1	Depth Behind Device Plates	3.87 in
-------------------	---	----------------------------	---------
