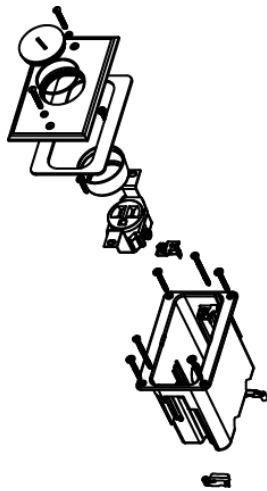




Wiremold  
WMFB1SRB Series Single-Gang Floor Box Assembly  
Part No. WMFB1SRB



Includes single-gang box, one 15A tamper-resistant receptacle, and brass cover with one screw plug. For hole cut dimensions, see installation instructions sheet. Box Dimensions: 2 1/8" W x 3 3/4" L x 3 7/8" D (54mm W x 95mm L x 98mm D) Device Plate: 3 1/8" W x 4 15/16" L (79mm W x 125mm L).

## Features & Benefits

Includes single-gang box, one 15A tamper-resistant receptacle, and brass cover with one screw plug.

Box Dimensions: 2 1/8" W x 3 3/4" L x 3 7/8" D (54mm W x 95mm L x 98mm D) Device Plate: 3 1/8" W x 4 15/16" L (79mm W x 125mm L).

For hole cut dimensions, see installation instructions sheet.

## Specifications

### General Info

Product Line	Wiremold	UPC Number	786564053927
Country Of Origin	Mexico	Material	PVC
Construction	Not Assembled	Cover Style	Surface
Cover Material	Brass	Application Sector	Commercial, Residential
Standard	cULus Listed Nonmetallic Outlet Boxes: File E143222 Guide QCMZ. Meets Article 314.27(C) of NEC.	Warranty Type	1-Year from Installation or 2-Years from Day of Sale
Type	Floor Box		

### Dimensions

Product Width US	2.125 in	Product Weight US	0.95 lb
------------------	----------	-------------------	---------

---

Product Depth US	3.875 in	Knockout Size	1/2 in, 3/4 in
------------------	----------	---------------	----------------

---

### Listing Agencies / 3rd Party Agencies

---

cULus Listed	Yes
--------------	-----

---

### Additional Information

---

RoHS Compliant	Yes
----------------	-----

---

### Technical Information

---

Floor Type	Wood	Service Capacity	Single
------------	------	------------------	--------

---

Minimum Floor Depth	5 in	Box Capacity	1 Gang
---------------------	------	--------------	--------

---

Cable Entry	Through Floor	Box Type	Recessed
-------------	---------------	----------	----------

---

Number of Outlets	1	Depth Behind Device Plates	3.87 in
-------------------	---	----------------------------	---------

---