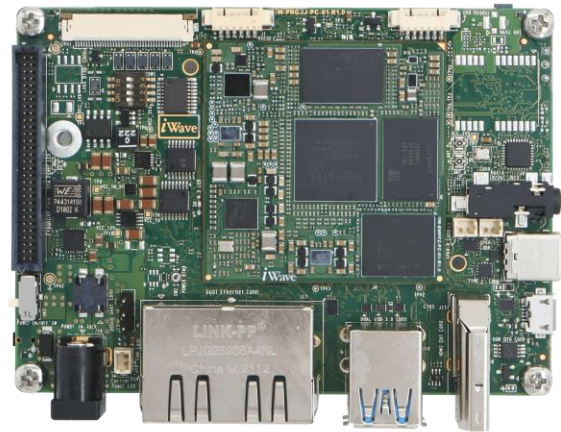


iG-RainboW- G70S

MediaTek Genio 1200 based Single Board Computer

The MediaTek Genio 1200 SoC based size L Module is designed as per the Open Standard Module™ specification v1.2 (OSM). It integrates MediaTek's Genio 1200 offerings Quad Cortex-A78@2200MHz, Quad Cortex-A55@2000MHz, Mali-G57 MC5@880MHz, HiFi4 DSP @720MHz, HDR capable Image Signal Processor (ISP) module. Genio 1200 supports Vision Processor 6 (VP6) and MediaTek Deep Learning Accelerators (MDLA) for enhancing multimedia performance.

The MediaTek Genio 1200 based SBC is aimed to offer for applications mainly focusing on Smart Home Appliance, Industrial IoT and other AI Embedded devices with high reliability.

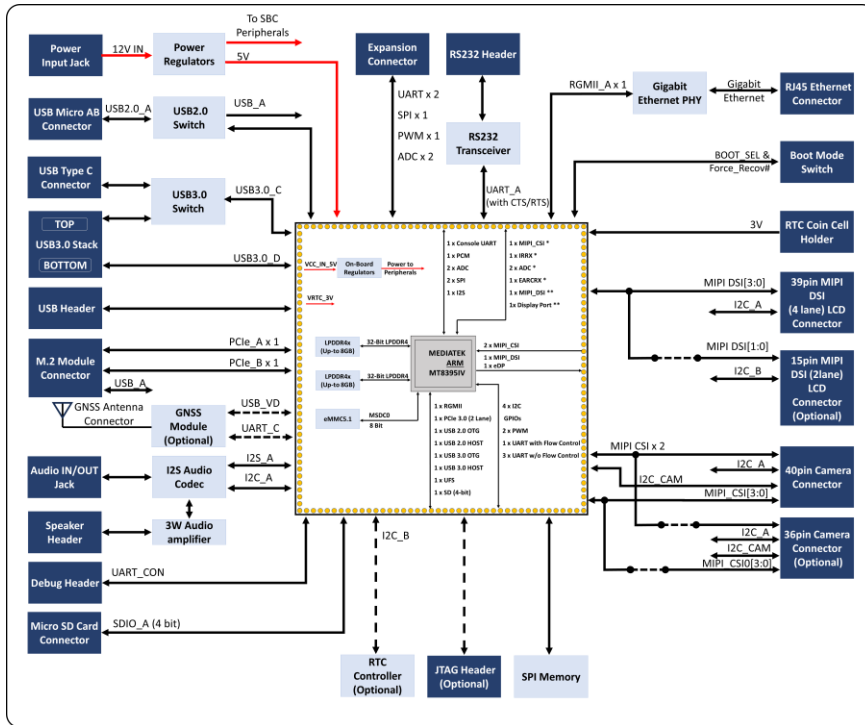


Highlights

- ❖ Supports Quad Cortex®-A78 and Quad Cortex®-A55 processor
- ❖ 8GB LPDDR4X Expandable up to 16GB
- ❖ 32GB eMMC Flash Expandable up to 128GB
- ❖ 1000/100/10 Mbps Ethernet
- ❖ Industrial Grade (-40°C to +85°C)

Ordering Information

Block Diagram



Note: Optional features are not supported in default configuration

Technical Specifications

| | | | |
|-------------------------|--|------------------------------|--|
| CPU | MT8395 : 4 x Arm®Cortex-A78@2200MHZ, 4 x Arm®Cortex-A55@2000MHZ, 1 x Arm®Mali™-G57 MC5@880MHz, Vision Processor 6-AI for accelerating AI processing. | Audio/Video Features | <ul style="list-style-type: none">4-Lane MIPI_DSI Display Connector x 12-Lane MIPI_DSI Display Connector x 1 (Optional)MIPI CSI Camera Connector3.5mm Audio IN/OUT JackSpeaker Out Header |
| Power | MT6365IAW/B PMIC MT6360P PIMIC MT6315GP/B Buck Regulator MT6315LP/B Buck Regulators | Expansion Connector Features | <ul style="list-style-type: none">UART x 1SPI x 1 PortPWM x 1ADC x 2 (Optional) |
| Memory | 8GB LPDDR4X (Expandable up to 16GB) | Miscellaneous Interfaces | <ul style="list-style-type: none">RTC Controller with RTC Battery HeaderDebug UART HeaderJTAG Header (Optional)M.2 Connector Key B<ul style="list-style-type: none">PCIe 3.0 x 1 (2-lane) |
| Storage | 32GB eMMC Flash (Expandable up to 128GB), Micro SD Slot | Operating System | Linux 5.15.47 |
| Network & Communication | <ul style="list-style-type: none">Gigabit Ethernet x 1 (RJ45 Mag-jack Connector)USB 2.0 OTG (micro AB Receptacle Connector)USB 2.0 Host x 1USB 3.0 x2 (Dual-stack Type-A Connector)USB Type-C Connector (muxed with top port of Dual-stack Type-A Connector)USB Header x 1RS232 Header x 1 | Operating Temp. | -40°C to +85°C (Industrial Grade) |
| | | Form Factor | 100mm x 72mm |
| | | Power Input | 12V,2A input through External Adaptor |
| | | Environment Spec. | REACH & RoHS3 Compliant |

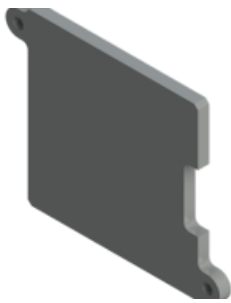
Deliverables

- MediaTek Genio 1200 based SBC
- Thermal solutions
- Enclosure
- Board Support Package

Resources

- Datasheet
- Quick Start Guide
- Linux User Manual

Product accessories



Thermal Solutions

iWave offers heat sink and spreader solutions for the MediaTek Genio 1200 – Based SBC.



Enclosure

iWave offers rugged aluminiums and metal enclosures for SBCs, ensuring protection with full port access.



Power Adapter

12V Power Supply Adapter

Applications

▪ Smart Home Appliances

Automates home functions like lighting, climate control, security, and entertainment for convenience and energy efficiency.

▪ Industrial IoT

Enhances manufacturing processes with connected devices for real-time monitoring, predictive maintenance, and operational efficiency.

▪ AI Embedded Devices

Provides intelligent, autonomous functions in appliances, robots, and sensors for decision-making and automation.

A Global Leader in Embedded Systems Engineering and Solutions

Since 1999, we have pioneered leadership in embedded systems technology, establishing ourselves as a strategic embedded technology partner for advanced solutions. Our comprehensive portfolio encompasses ARM and FPGA System on Modules, COTS FPGA solutions, and ODM solutions which include Telematics, Gateways & HMI Solutions.

Beyond our robust product ecosystem, we provide comprehensive ODM support with specialized custom design and manufacturing capabilities, enabling customers to accelerate and optimize their product development roadmaps. With a strategic focus on industrial, automotive, medical, and avionics markets, we deliver innovative technology solutions to global clients.

mktg@iwave-global.com

iWave Global

Bangalore, India

iWave USA

Campbell, California

iWave Global

Ras Al Khaimah, UAE

iWave Global GmbH

Ratingen, Germany

iWave Europe

Rotterdam, Netherlands

iWave APAC

Taipei City, Taiwan

iWave Korea

Gyeonggi,-do, Korea

iWave Japan

Yokohama, Kanagawa

iWave
Global