



COAXIAL

# Adapter

## NFFL-SF50+

50Ω DC to 18 GHz N-Type Female to SMA Female

### FEATURES

- Flat response
- Excellent VSWR
- Four-hole flange panel mount
- Stainless-steel construction



Generic photo used for illustration purposes only

<b>Model No.</b>	NFFL-SF50+
<b>Case Style</b>	DJ1808
<b>Connectors</b>	N-Type Female to SMA Female

### +RoHS Compliant

The +Suffix identifies RoHS Compliance.  
See our website for methodologies and qualifications

### APPLICATIONS

- Interconnection of RF cables and equipment
- Instrumentation

### ELECTRICAL SPECIFICATIONS AT +25 °C

Parameter	Frequency (GHz)	Min.	Typ.	Max.	Units
Frequency Range	-	DC	-	18	GHz
Insertion Loss	DC-18	-	0.01	-	dB
VSWR	DC-8	-	-	1.15	:1
	DC-12.4	-	-	1.20	
	DC-18	-	-	1.30	

### ABSOLUTE MAXIMUM RATINGS<sup>2</sup>

Parameter	Ratings
Operating Temperature	-45 °C to +100 °C
Storage Temperature	-55 °C to +100 °C

2. Permanent damage may occur if any of these limits are exceeded.

REV. B  
ECO-016681  
NFFL-SF50+  
MCL NY  
260506





COAXIAL

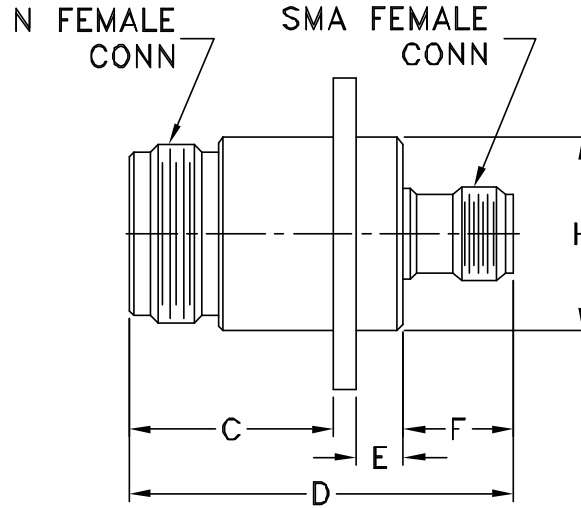
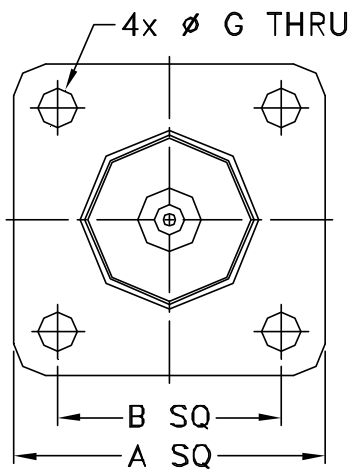
# Adapter

## NFFL-SF50+

Mini-Circuits

50Ω DC to 18 GHz N-Type Female to SMA Female

### OUTLINE DRAWING



### OUTLINE DIMENSIONS (Inch/mm)

A	B	C	D	E
1.00	.718	.657	1.240	.157
25.4	18.24	16.7	31.5	4.0
F	G	H		wt
.350	.126	.620		grams
8.9	3.2	15.75		36.0



COAXIAL

# Adapter

## NFFL-SF50+

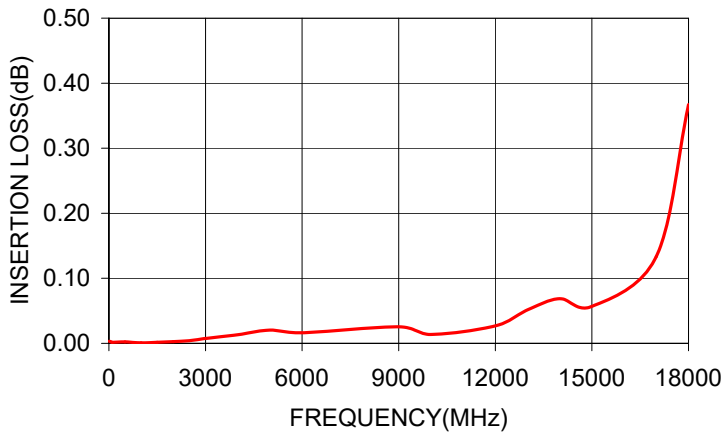
Mini-Circuits

50Ω DC to 18 GHz N-Type Female to SMA Female

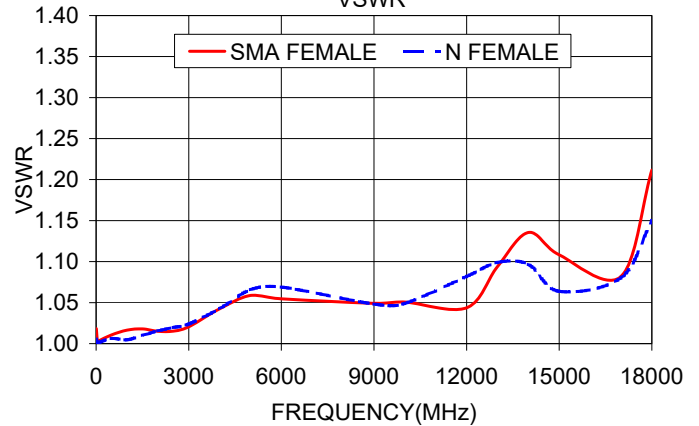
### TYPICAL PERFORMANCE DATA

Frequency (MHz)	Insertion Loss (dB)	VSWR (:1)	
		N- Female	SMA-Female
10.00	0.003	1.01	1.02
50.00	0.003	1.00	1.00
100.00	0.002	1.00	1.00
500.00	0.002	1.01	1.01
1000.00	0.001	1.00	1.02
1500.00	0.002	1.01	1.02
2000.00	0.003	1.02	1.02
2500.00	0.004	1.02	1.02
3000.00	0.008	1.02	1.02
4000.00	0.013	1.04	1.04
5000.00	0.020	1.07	1.06
6000.00	0.016	1.07	1.05
9000.00	0.026	1.05	1.05
10000.00	0.014	1.05	1.05
12000.00	0.027	1.08	1.04
13000.00	0.052	1.10	1.09
14000.00	0.069	1.10	1.14
15000.00	0.057	1.06	1.11
17000.00	0.133	1.08	1.08
18000.00	0.367	1.15	1.21

NFFL-SF50+  
INSERTION LOSS



NFFL-SF50+  
VSWR



NOTES

- A. Performance and quality attributes and conditions not expressly stated in this specification document are intended to be excluded and do not form a part of this specification document.
- B. Electrical specifications and performance data contained in this specification document are based on Mini-Circuit's applicable established test performance criteria and measurement instructions.
- C. The parts covered by this specification document are subject to Mini-Circuits standard limited warranty and terms and conditions (collectively, "Standard Terms"); Purchasers of this part are entitled to the rights and benefits contained therein. For a full statement of the standard terms and the exclusive rights and remedies thereunder, please visit Mini-Circuits' website at [www.minicircuits.com/terms/viewterm.html](http://www.minicircuits.com/terms/viewterm.html)

