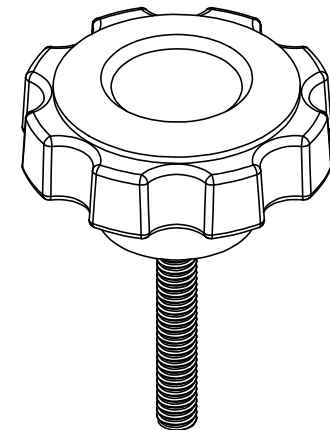
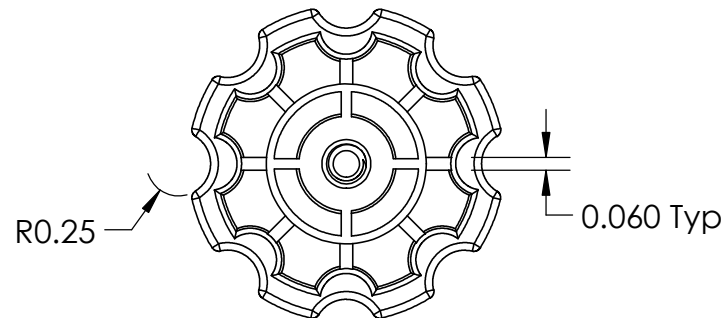
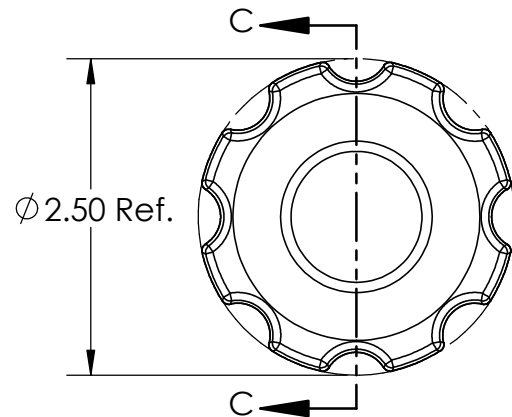


SECTION C-C
SCALE 1 : 1.5



FOR CUSTOMER APPROVAL ONLY					REV	BY	DATE	COMMENT	DIMENSIONS ARE IN INCHES TOLERANCES FRACTIONAL ± TWO PLACE DECIMAL ± 0.03 THREE PLACE DECIMAL ± 0.010 UNLESS OTHERWISE NOTED		DRAWN	VRR	INNOVATIVE COMPONENTS			
NAME:					0	CG	07/01/20	RELEASE DATE			APPROVED	LQR	PART NAME 2.5" Soft touch fluted knob 5/16-18 x 2" Steel, Zinc Stud			
								DATE			07/01/2020					
TITLE:								COMMENTS Soft Touch Material Usage: 0.0291 Pounds RoHS Compliant			PART NUMBER KN5C2000F7S--21		DRAWING NUMBER KN5C2000F7S--21-R0			
DATE:																
SIGNATURE:					PROPRIETARY AND CONFIDENTIAL THE INFORMATION CONTAINED IN THIS DRAWING IS THE SOLE PROPERTY OF INNOVATIVE COMPONENTS. ANY REPRODUCTION IN PART OR AS A WHOLE WITHOUT THE WRITTEN PERMISSION OF INNOVATIVE COMPONENTS IS PROHIBITED.			INNER PART NUMBER KN5C2000F6--21	MATERIAL TPE-48 Shore A	FINISH Textured	INSERT PART NUMBER Steel	INSERT FINISH Trivalent Zinc				



PLASTIC KNOBS / CONTROL KNOBS / HANDLES / QUICK RELEASE PINS & BALL LOCK PINS
SPRING LOADED PINS & PLUNGERS / WIRE ROPE LANYARDS / THREAD IDENTIFIERS