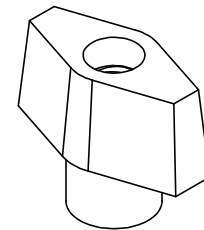
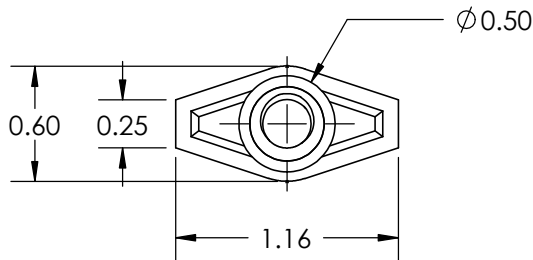
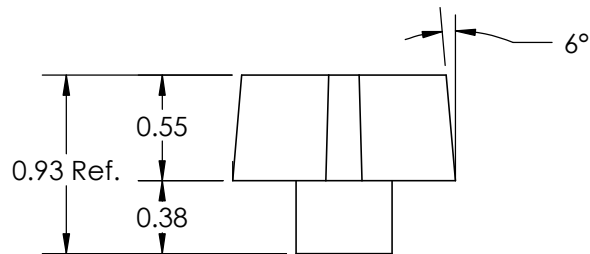
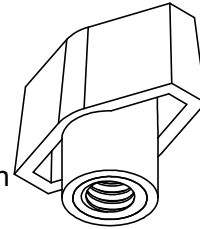


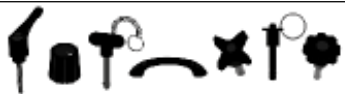
SECTION A-A  
SCALE 1 : 1

5/16-18 UNC-2B  
with Nylon Lock Patch



ACTUAL SIZE

FOR CUSTOMER APPROVAL ONLY				REV	BY	DATE	COMMENT
NAME:				0	RSL	6/13/14	RELEASE DATE
TITLE:							
DATE:							
SIGNATURE:							
				<b>PROPRIETARY AND CONFIDENTIAL</b> THE INFORMATION CONTAINED IN THIS DRAWING IS THE SOLE PROPERTY OF INNOVATIVE COMPONENTS. ANY REPRODUCTION IN PART OR AS A WHOLE WITHOUT THE WRITTEN PERMISSION OF INNOVATIVE COMPONENTS IS PROHIBITED.			
				DIMENSIONS ARE IN INCHES TOLERANCES FRACTIONAL $\pm$ TWO PLACE DECIMAL $\pm 0.03$ THREE PLACE DECIMAL $\pm 0.010$ UNLESS OTHERWISE NOTED			
				KNOB MATERIAL Polypropylene, Black			
				KNOB FINISH Textured			
				INSERT PART NUMBER KN5C0437750 -L22			
				DRAWN RSL			
				APPROVED RSL			
				DATE 6/13/14			
				COMMENTS Light Nylon locking patch for hand tightening			
				INSERT MATERIAL Steel			
				INSERT FINISH Zinc & Yellow			
				PART NAME 1.12" T-Knob, Through Hole, 5/16-18 Steel Zinc & Yellow Insert, Locking Patch			
				PART NUMBER KN5C----T1--L22			
				DRAWING NUMBER 07-32-13 R2			
				SCALE 1:1			
				SHEET 1 OF 1			



PLASTIC KNOBS / CONTROL KNOBS / HANDLES / QUICK RELEASE PINS & BALL LOCK PINS  
 SPRING LOADED PINS & PLUNGERS / WIRE ROPE LANYARDS / THREAD IDENTIFIERS