

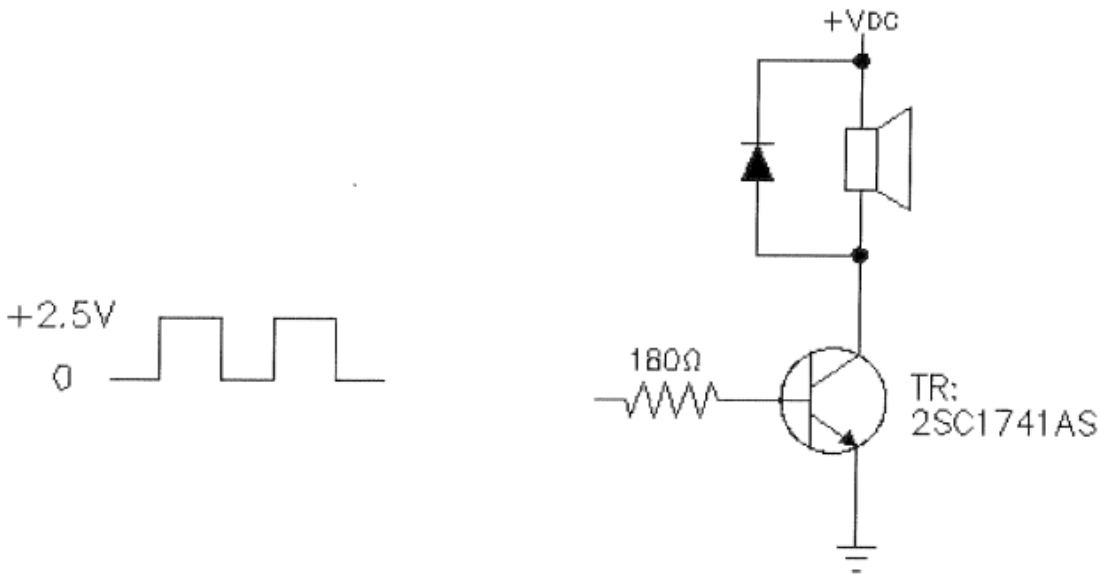


Data Sheet	SMT-1427-S-2-R
------------	----------------

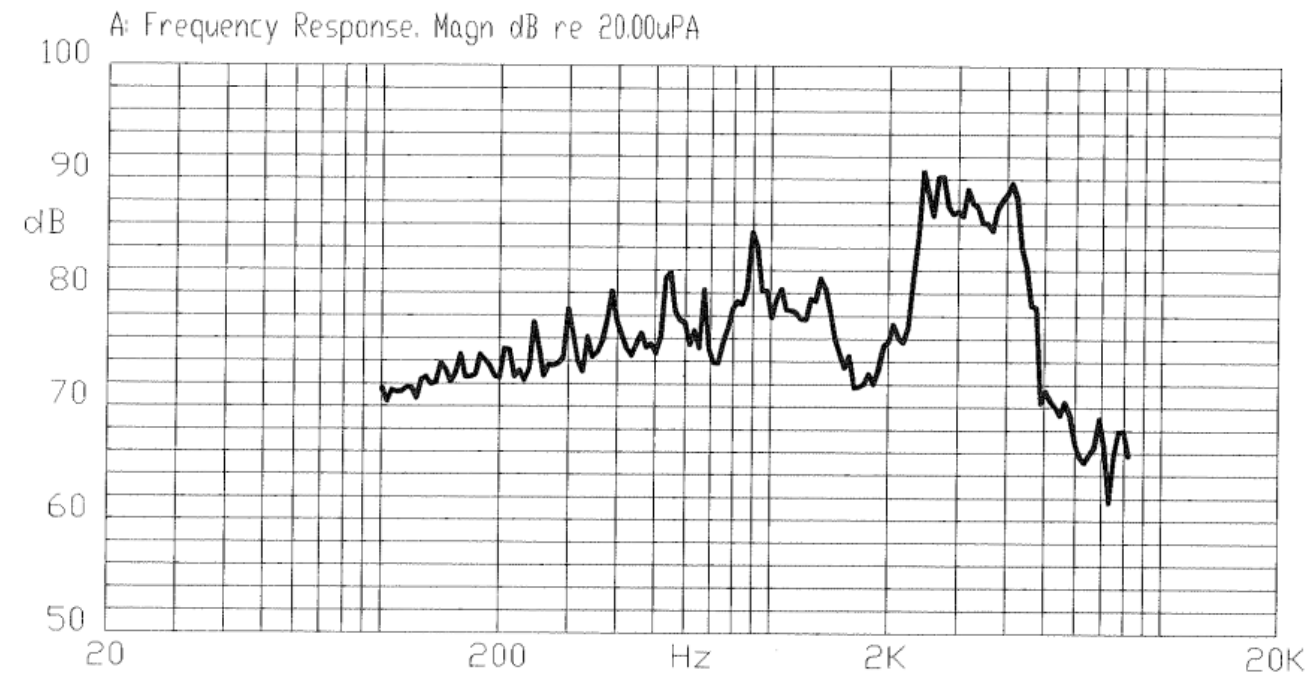
Specifications

Parameters	Values	Units
Rated Voltage	1.5	V0-pk
Operating Voltage Range	1.2 ~ 1.7	V0-pk
Current Draw at Rated Voltage	80(Max.)	mA
Coil Resistance	9 ± 2	Ohms
Minimum SPL @ 10cm	85	dBA
Resonant Frequency	2700 ± 500	Hz
Housing Material	LCP	-
Terminal Material	Sn Plated Phosphor Bronze	-
Weight	1	Grams
Acceptable Soldering Methods	Hand Solder, Reflow Solder	See following pages
Environmental Compliances	ROHS/REACH	-
Moisture Sensitivity Level	1	-
Storage Temperature	-50 to 85	°C
Operating Temperature	-40 to 85	°C

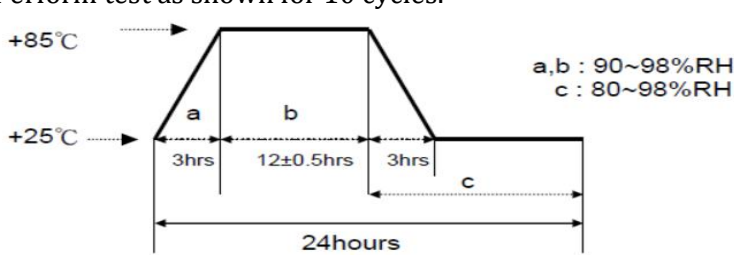
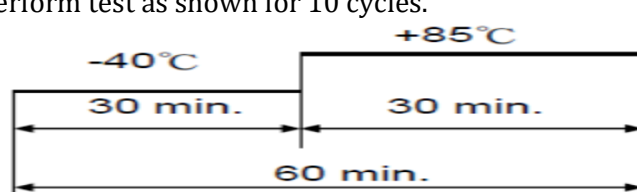
Measurement Method (1.5Vpk, 2.7kHz)



Typical Frequency Response (1.5Vpk, 0.1m)

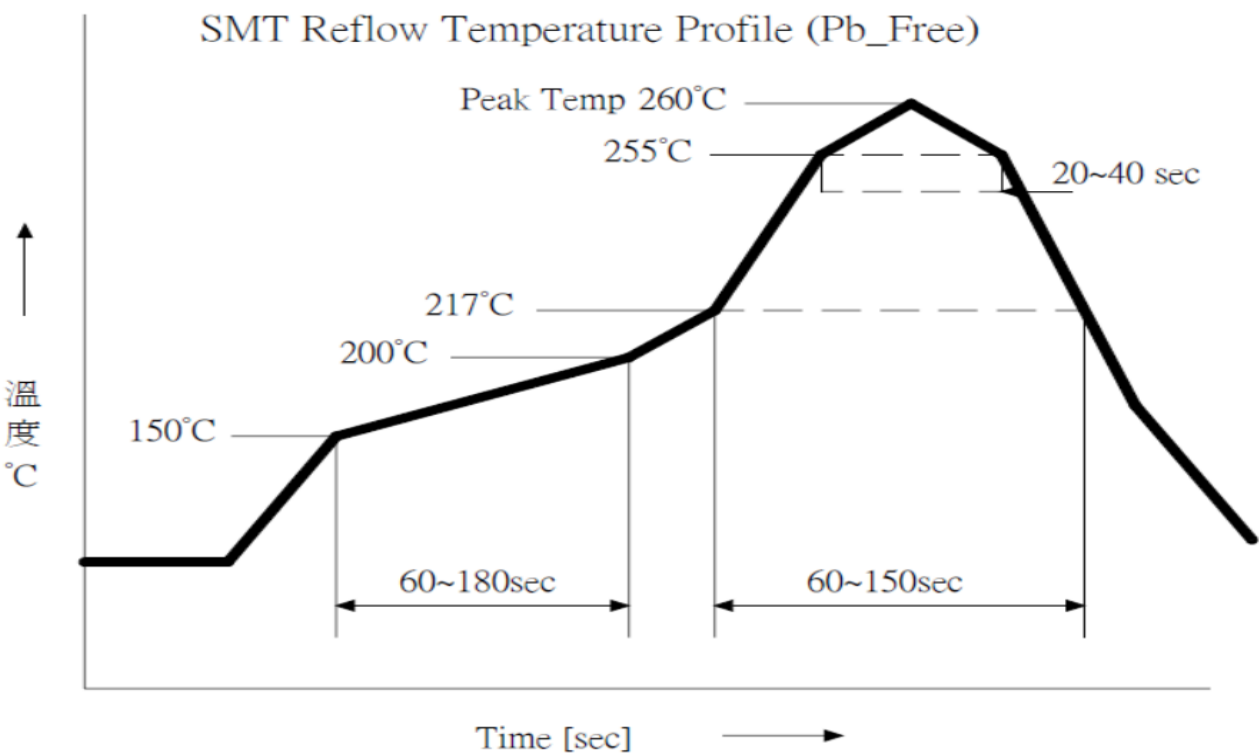


Reliability Testing

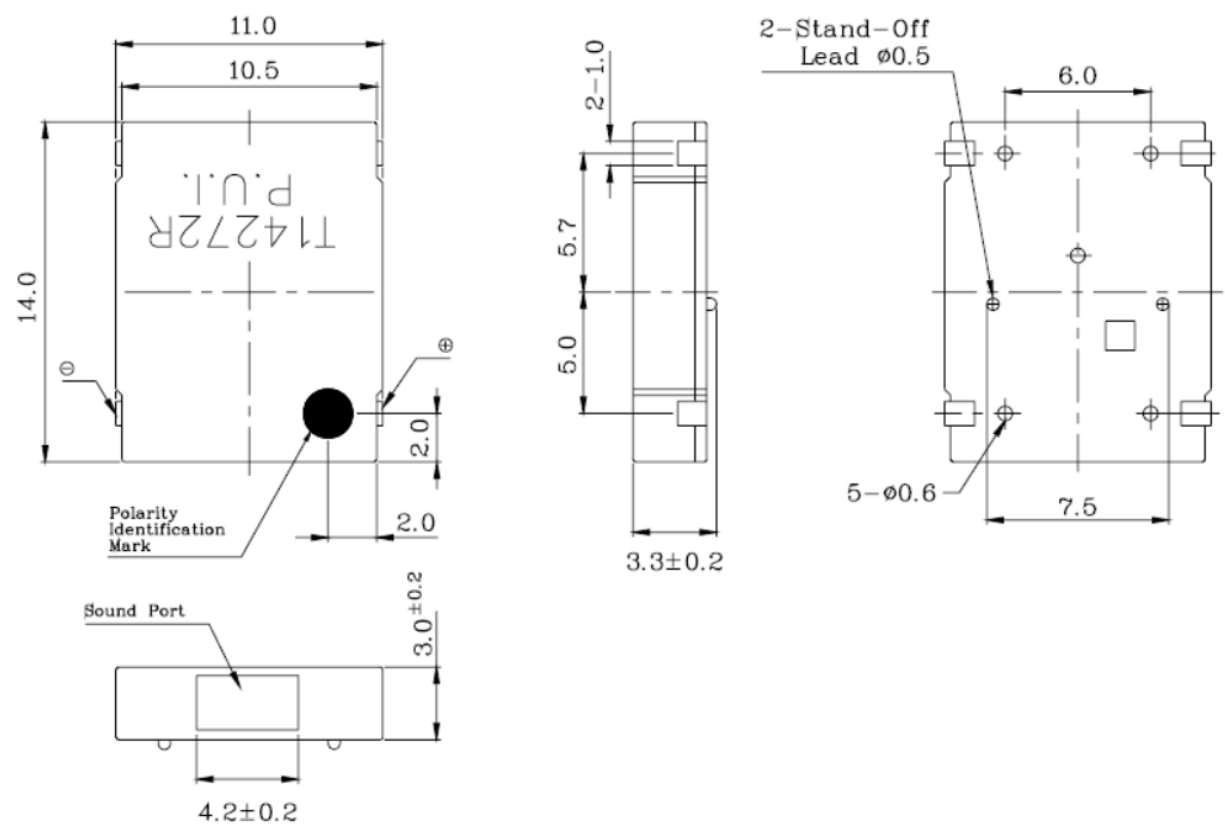
Type of Test	Test Specifications
High Temperature Test	96 hours at 85°C. Rest at room temperature for 4 hours.
Low Temperature Test	96 hours at -40°C. Rest at room temperature for 4 hours.
Humidity Test	Perform test as shown for 10 cycles. 
Temperature Cycle Testing	Perform test as shown for 10 cycles. 
Vibration Test	Vibration amplitude of 1.5mm with 10-55Hz band of frequency to each XYZ direction for 2 hours.
Drop Test	Drop from height of 75cm onto 4cm thick wooden board for 3 times in each XYZ direction (total 9 times).

After tests, part shall be without damage and within 10dB of stated SPL value.

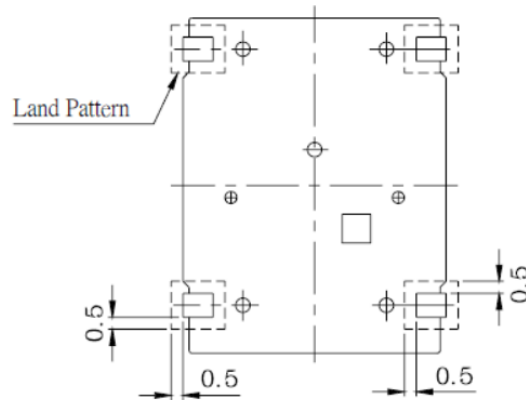
Recommended Reflow Profile



Dimensions (Tolerance $\pm 0.5\text{mm}$ unless otherwise noted)

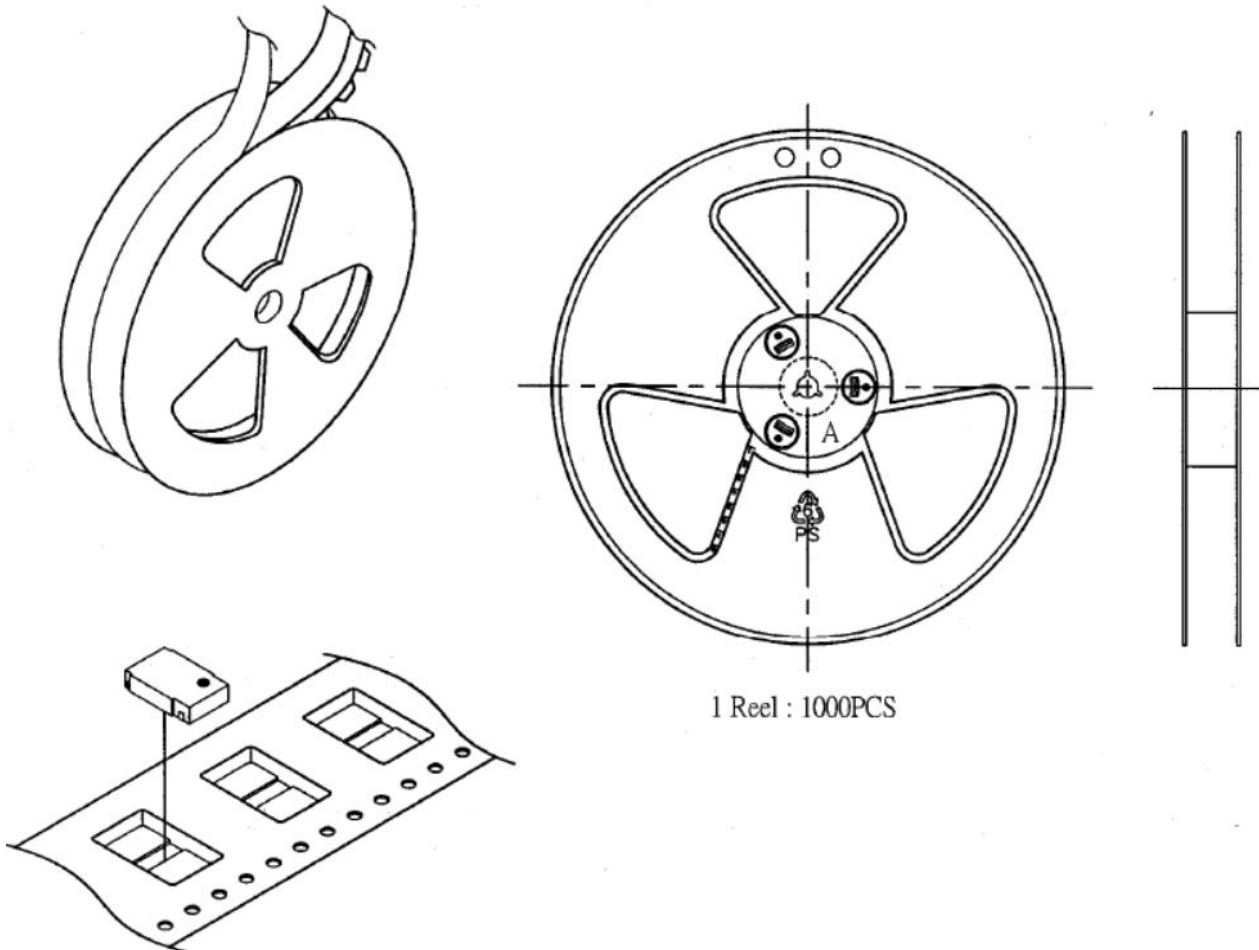


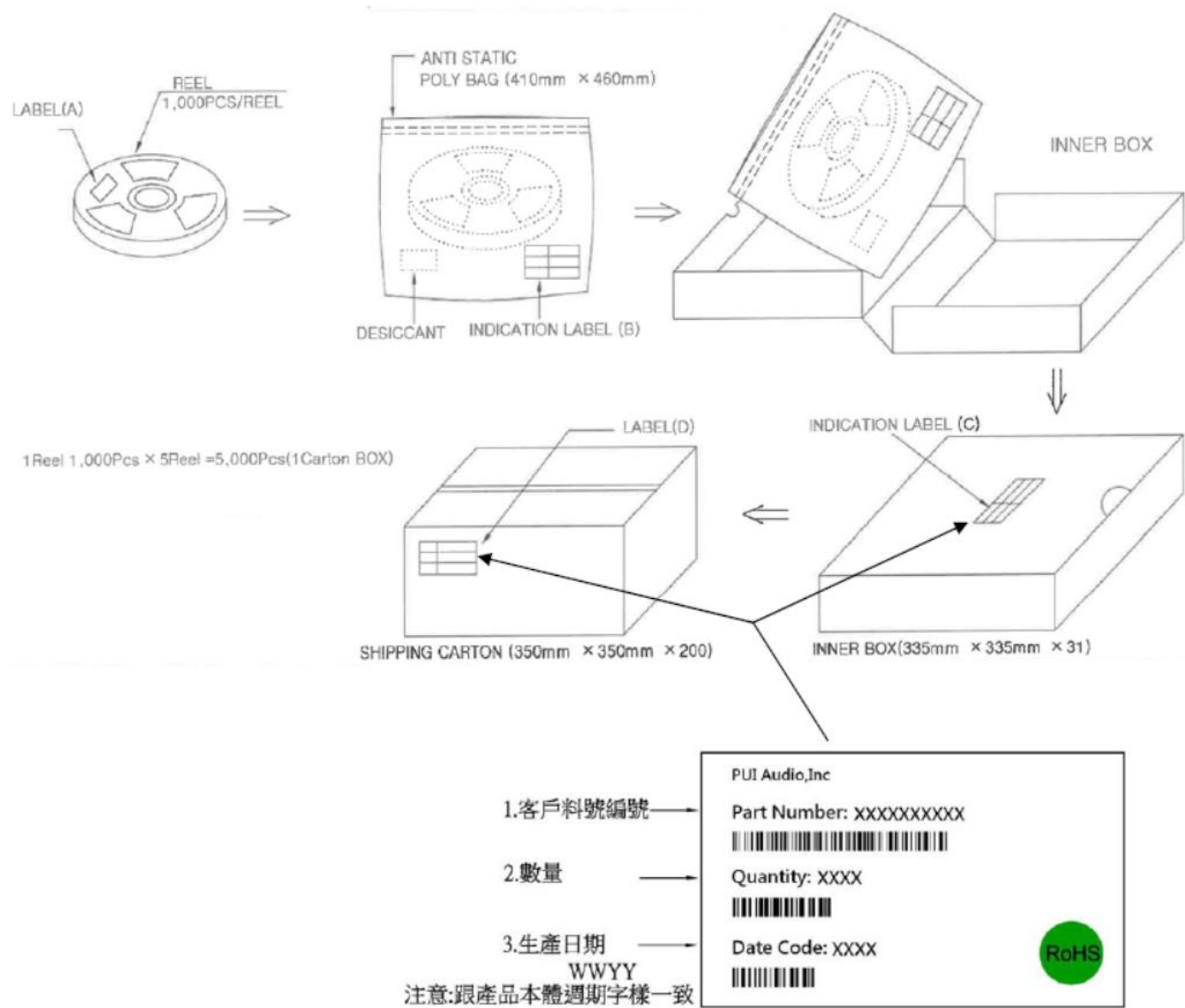
Suggested Land Pattern*



*This land pattern is advisory only and its use or adaptation is entirely voluntary. PUI Audio disclaims all liability of any kind associated with the use, application, or adaptation of this land pattern.

Packaging





Specifications Revisions

Revision	Description	Date	Approved
-	Released from Engineering	09/27/2005	
A	Revised to Inventor 3-D drawing template	05/07/2010	BR
B	Updated Spec Format, Revised Voltage Units and Housing Material, Add details for Reliability, Packaging, etc.	05/14/2025	ML

Note:

- Unless otherwise specified:
 - All dimensions are in millimeters.
 - Default tolerances are $\pm 0.5\text{mm}$ and angles are $\pm 3^\circ$.
- Specifications subject to change or withdrawal without notice.