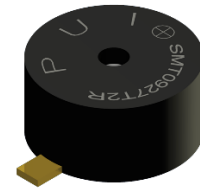




# PUIaudio



## Data Sheet

SMT-0927-T-2-R

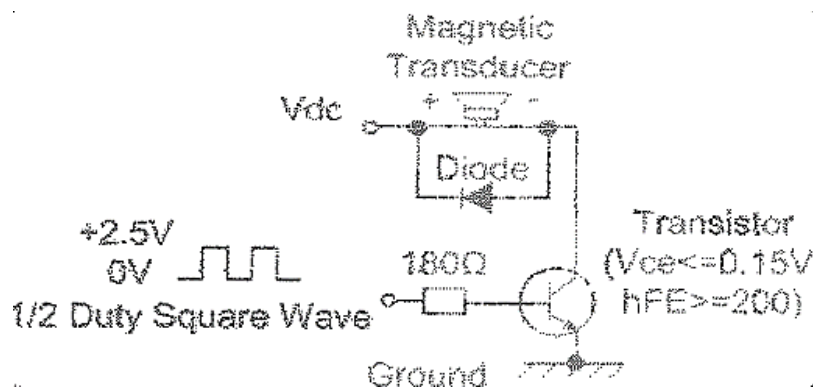
### Features:

- Top-firing electromechanical transducer designed for 2 ~ 4Vpk
- Small 9mm diameter footprint and 4.5mm height for thin, modern devices
- Designed for reflow soldering using a lead-free profile

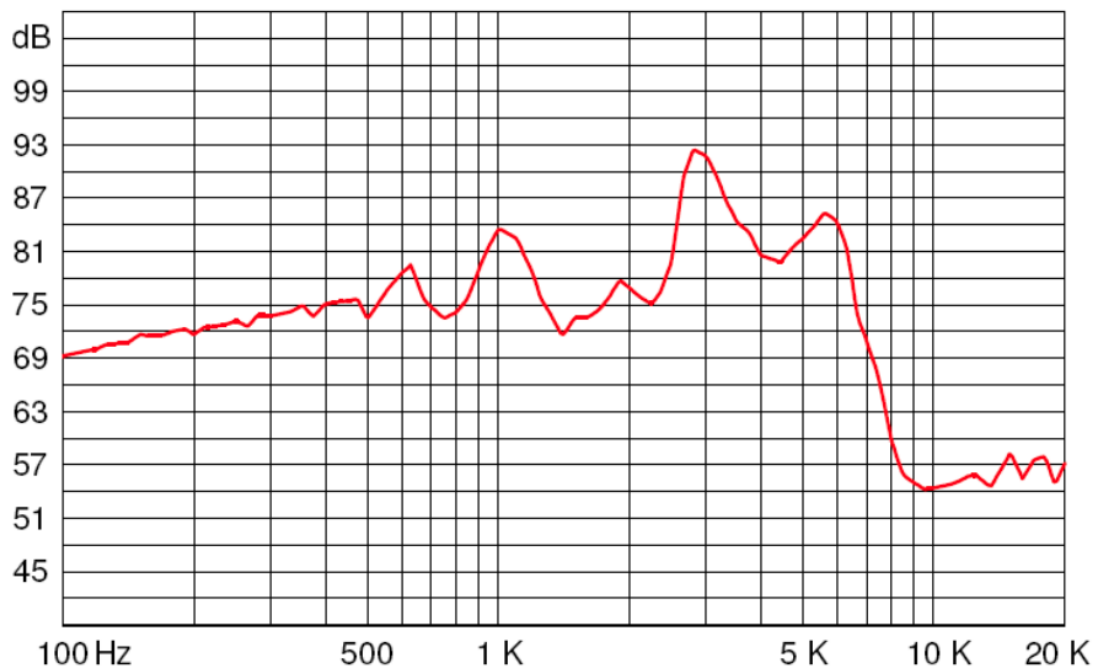
### Specifications

Parameters	Values	Units
Rated Voltage	3	V0-pk
Operating Voltage Range	2 ~ 4	V0-pk
Current Draw at Rated Voltage	80	mA
Coil Resistance	$16 \pm 3$	Ohms
Minimum SPL @ 10cm	85	dBA
Resonant Frequency	$2730 \pm 200$	Hz
Housing Material	PPS	-
Terminal Material	Au plated brass	-
Weight	0.8	Grams
Acceptable Soldering Methods	Hand Solder, Reflow Solder	See following pages
Environmental Compliances	ROHS/REACH	-
Moisture Sensitivity Level	2A	-
Storage Temperature	-40 to 85	°C
Operating Temperature	-40 to 85	°C

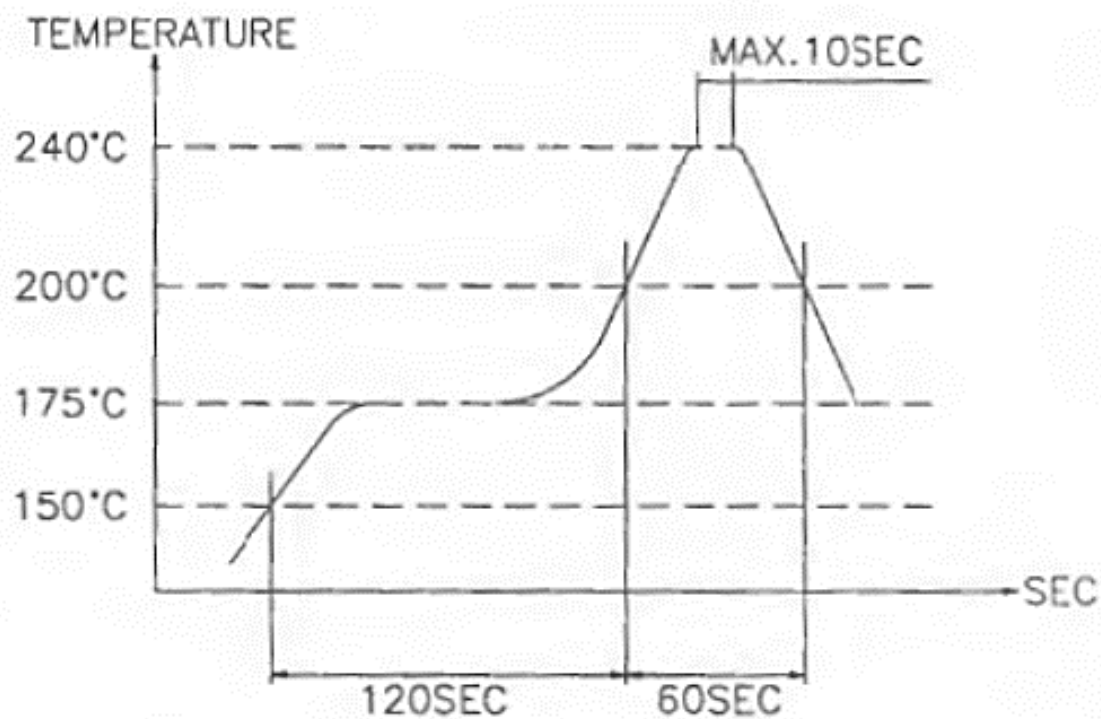
### Measurement Method (Square Wave 3Vpk, 2.7kHz @ 10cm)



## Typical Frequency Response (3Vpk square wave, 0.1m)



## Recommended Soldering Procedure

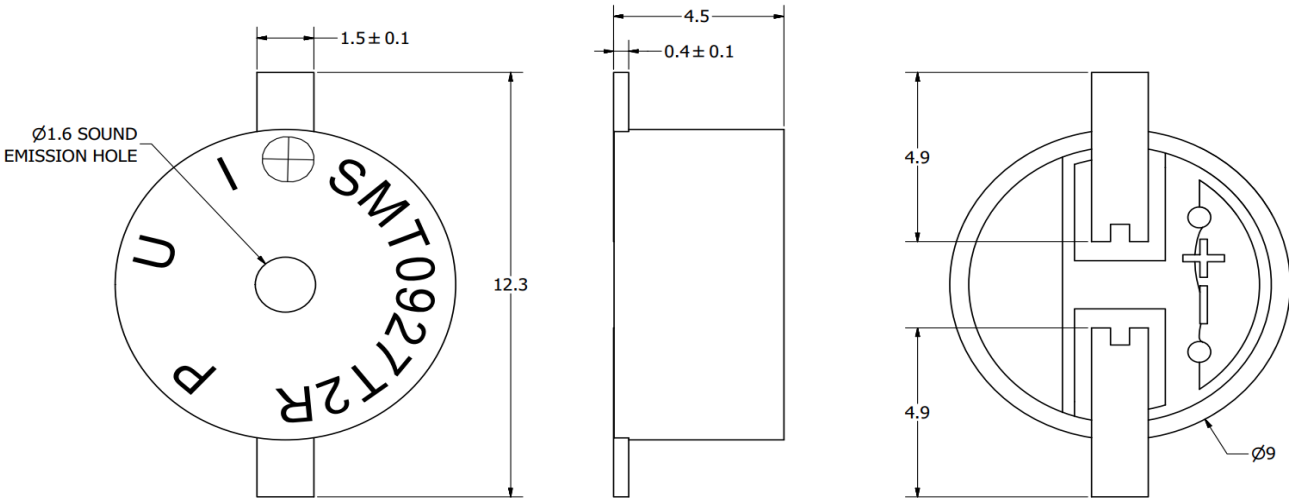


Reliability Testing

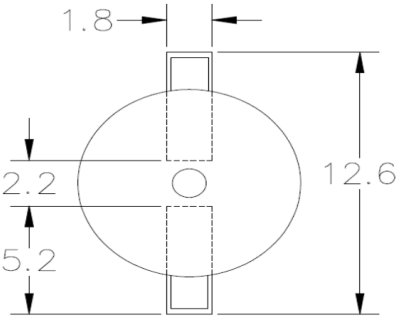
Type of Test	Test Specifications
High Temperature Test	96 hours at 80±2°C, with random humidity.
Low Temperature Test	96 hours at -40±2°C, with random humidity.
Humidity Test	25°C to 55°C with 90% to 95% relative humidity for 12 hours, 10 cycles.
Temperature Cycle Testing	90 minutes, -30°C to 70°C, 5 cycles.
Vibration Test	1.53 mm movement modulated at 10-55 Hz in 3 directions for 6 hours
Drop Test	From a height of 120 cm drop the transducer in free fall in six directions, 3 times.

After testing, part shall rest for two hours and then be tested for a clean, pure tone.

Dimensions

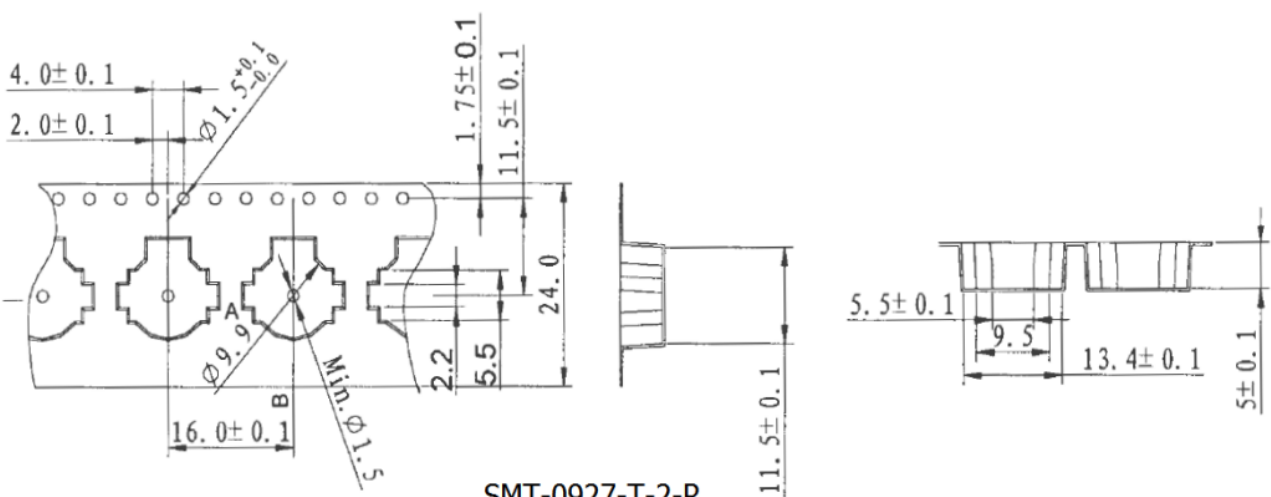


Suggested Land Pattern\*

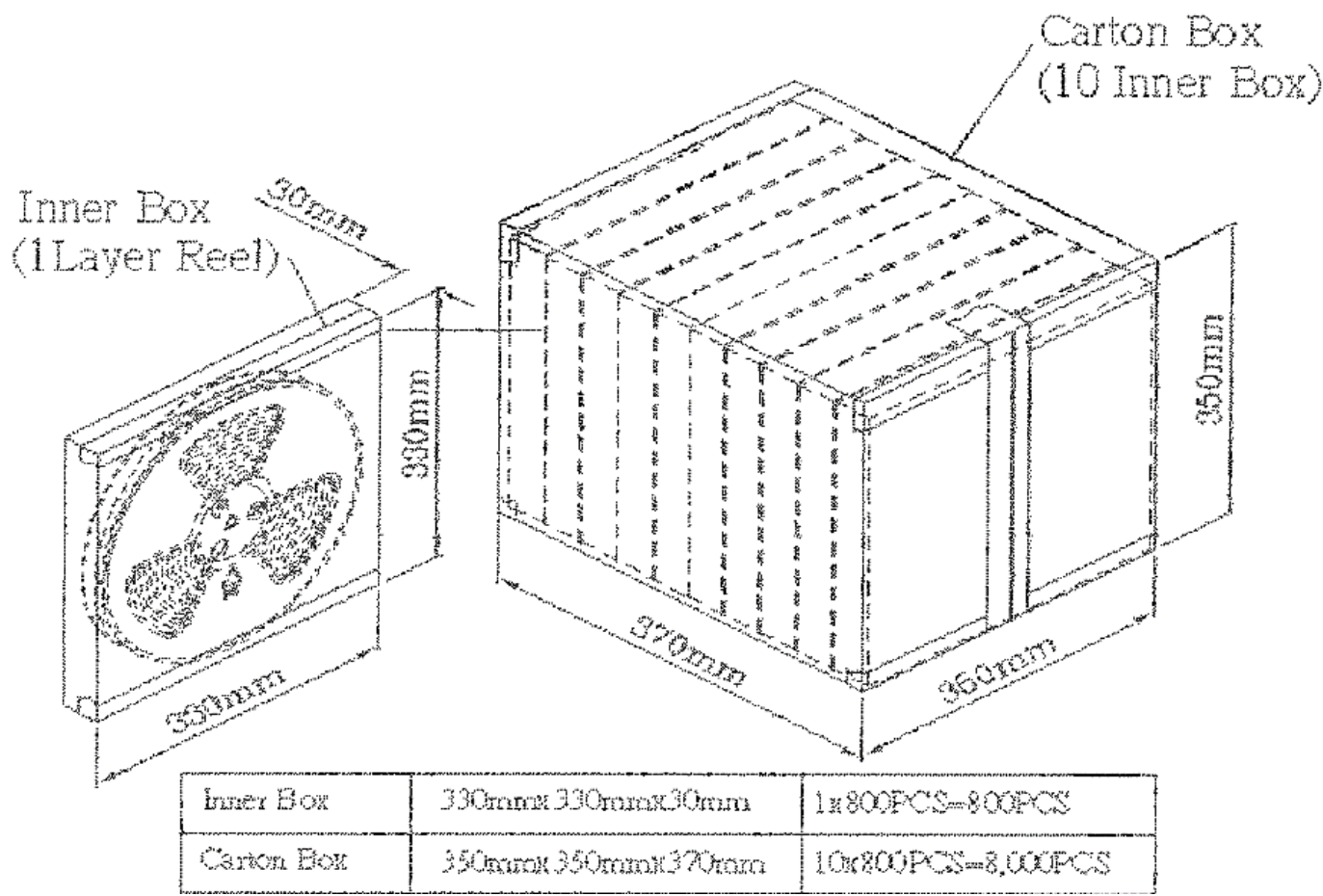


\*This land pattern is advisory only and its use or adaptation is entirely voluntary. PUI Audio disclaims all liability of any kind associated with the use, application, or adaptation of this land pattern.

Packaging



SMT-0927-T-2-R  
Tape Dimensions  
800 PCS/Reel



Specifications Revisions			
Revision	Description	Date	Approved
-	Released from Engineering	06/16/2011	-
A	Update Spec Format, Add details for Packaging, Reliability, MSL 2A etc. Revised Voltage Units	04/08/2025	ML

- Note:
- 1. Unless otherwise specified:
    - A. All dimensions are in millimeters.
    - B. Default tolerances are  $\pm 0.5\text{mm}$  and angles are  $\pm 3^\circ$ .
  - 2. Specifications subject to change or withdrawal without notice.