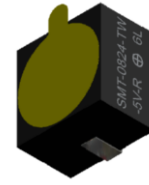




# PUIaudio



## Data Sheet

SMT-0824-TW-5V-R

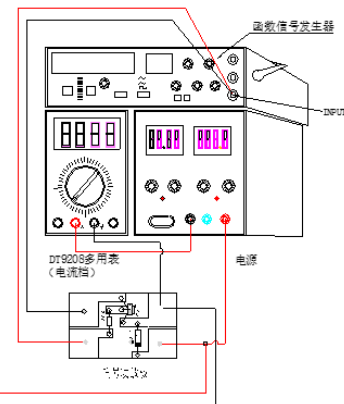
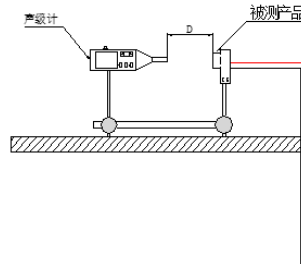
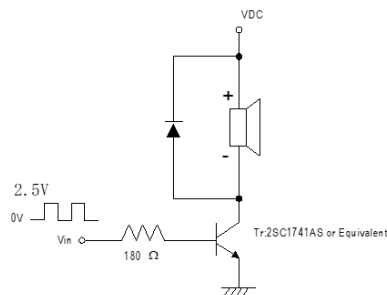
### Features:

- 5Vpk, 2400Hz Magnetic Buzzer
- Reflow and Washing Allowed

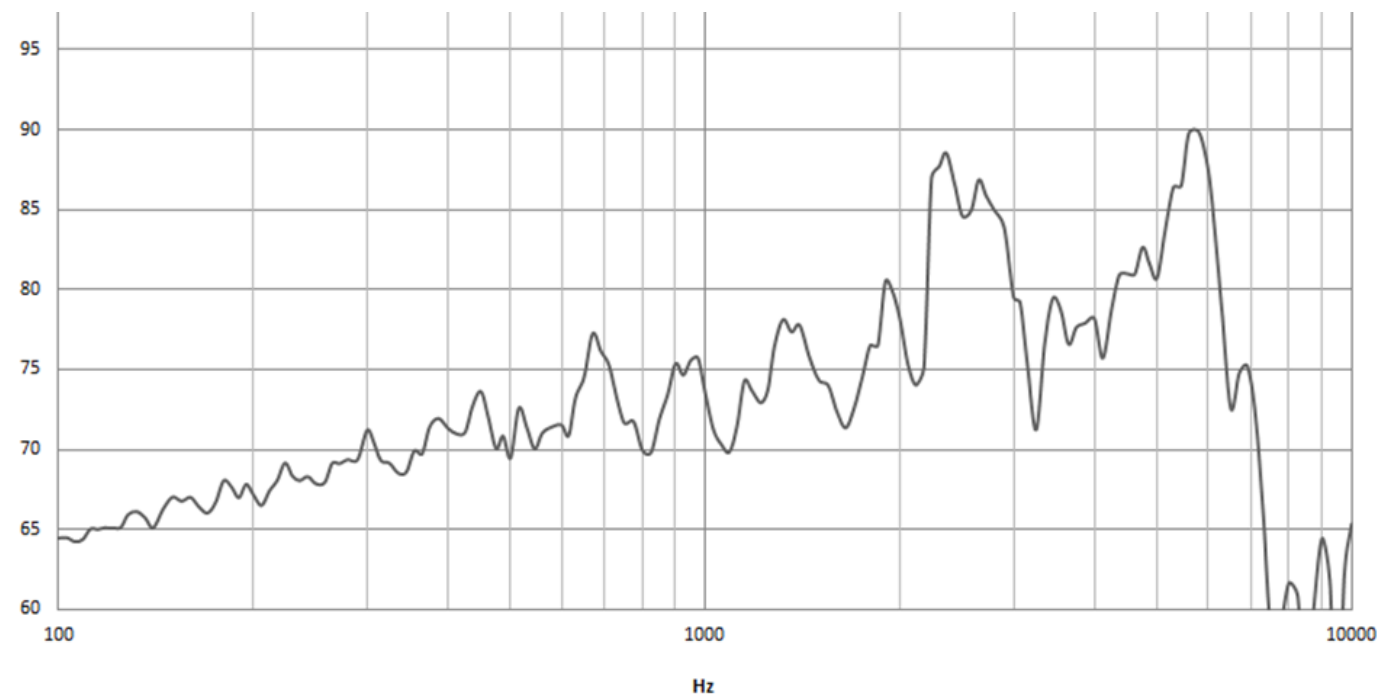
### Specifications

Parameters	Values	Units
Rated Voltage	5	V0-pk
Operating Voltage Range	3 ~ 8	V0-pk
Current Draw at Rated Voltage	60(Max.)	mA
Coil Resistance	30 ± 5	Ohms
Minimum SPL @ 10cm	85	dBA
Resonant Frequency	2400 ± 500	Hz
Housing Material	LCP	-
Terminal Material	Sn Plated Brass	-
Weight	0.6	Grams
Acceptable Soldering Methods	Hand Solder, Reflow Solder	See following pages
Environmental Compliances	ROHS/REACH	-
Moisture Sensitivity Level	2A	-
Storage Temperature	-50 ~ 95	°C
Operating Temperature	-40 ~ 85	°C

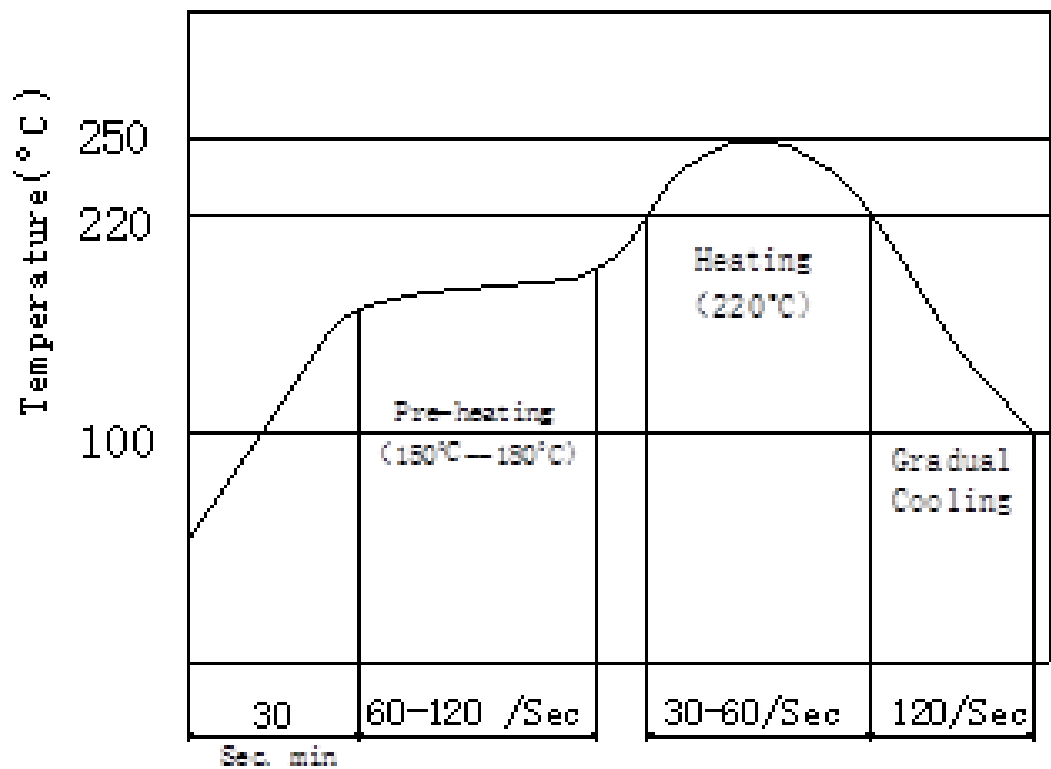
### Measurement Method (2400Hz ½ duty square wave, 5Vpk, 10cm)



Typical Frequency Response (5Vpk, 10cm)



Recommended Reflow Profile

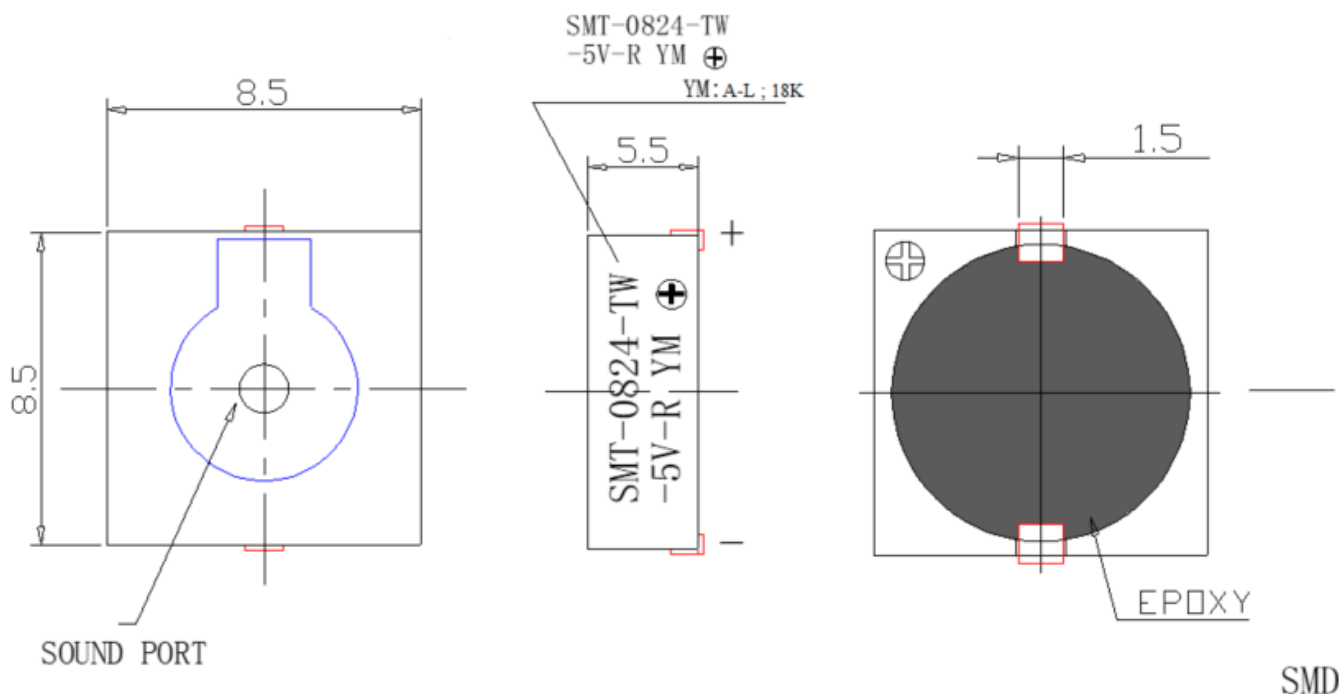


## Reliability Testing

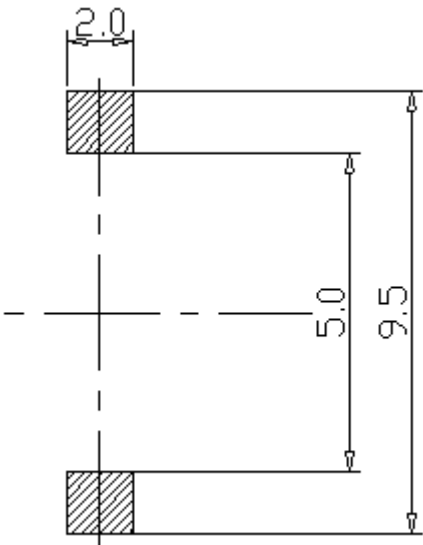
Type of Test	Test Specifications
High Temperature Test	96 hours at 95°C, Rest at room temperature for 2 hours.
Low Temperature Test	96 hours at -50°C, Rest at room temperature for 2 hours.
Humidity Test	96 hours at 40°C with relative humidity at 90-95%. Rest at room temperature for 2 hours.
Temperature Cycle Testing	<p>Complete this cycle 5 times without power. Rest at room temperature for 2 hours.</p>
Vibration Test	<p>Complete this test for XYZ directions for 2hrs each. (Total 6hrs)</p>
Drop Test	Free drop from height of 100cm onto 10mm thick wooden board in each XYZ direction.

After Tests, part SPL shall be within  $\pm 5\text{dB}$ .

## Dimensions

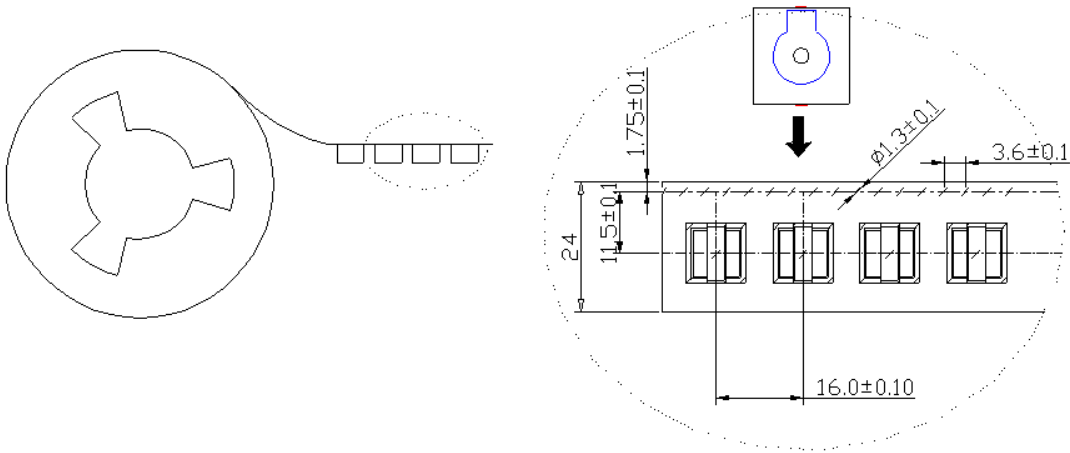


**Suggested Land Pattern\***



\*This land pattern is advisory only and its use or adaptation is entirely voluntary. PUI Audio disclaims all liability of any kind associated with the use, application, or adaptation of this land pattern.

**Packaging 600pcs/Reel**



**Specifications Revisions**

<b>Revision</b>	<b>Description</b>	<b>Date</b>	<b>Approved</b>
-	Released from Engineering	03/29/2007	-
A	Revised Minimum SPL	05/16/2007	RW
B	Revised to Inventor 3D Drawing Template	11/05/2007	BR
C	Revised Specifications	11/08/2011	ML
D	Updated Spec Format, Add details for Reliability, Packaging, etc. Add MSL 2A, Revised SPL	03/03/2025	ML

**Note:**

- Unless otherwise specified:
  - All dimensions are in millimeters.
  - Default tolerances are  $\pm 0.5\text{mm}$  and angles are  $\pm 3^\circ$ .
- Specifications subject to change or withdrawal without notice.