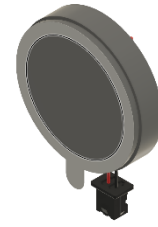




# PUI audio



Data Sheet

AS02008MR-2-LWC30

The AS02008MR-2-LWC30 is designed for applications such as hand-held devices, portable devices, and devices that value compact design.

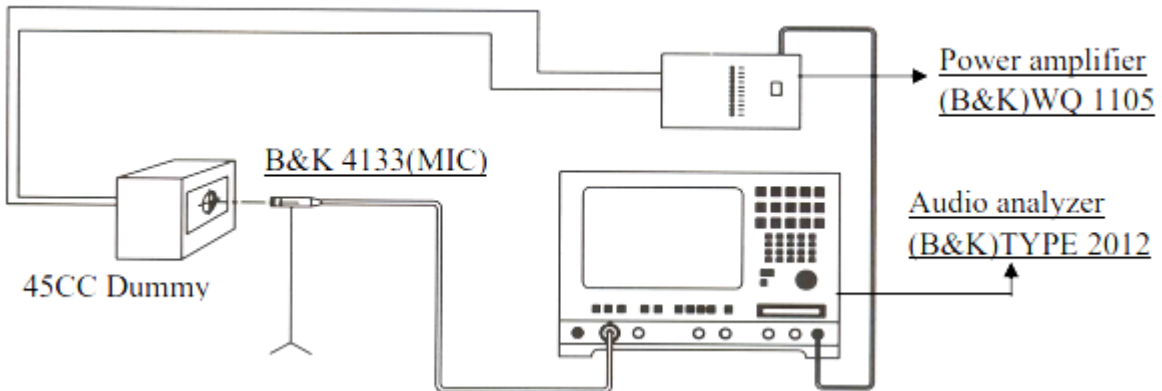
Features:

- 90dB SPL: PDRIVE = 0.1W, distance = 0.1m
- 1.0W continuous dissipation
- 670Hz free-air resonance
- 20mm diameter x 5.0mm dimensions
- Lead Wire Connector assembly for easy implementation

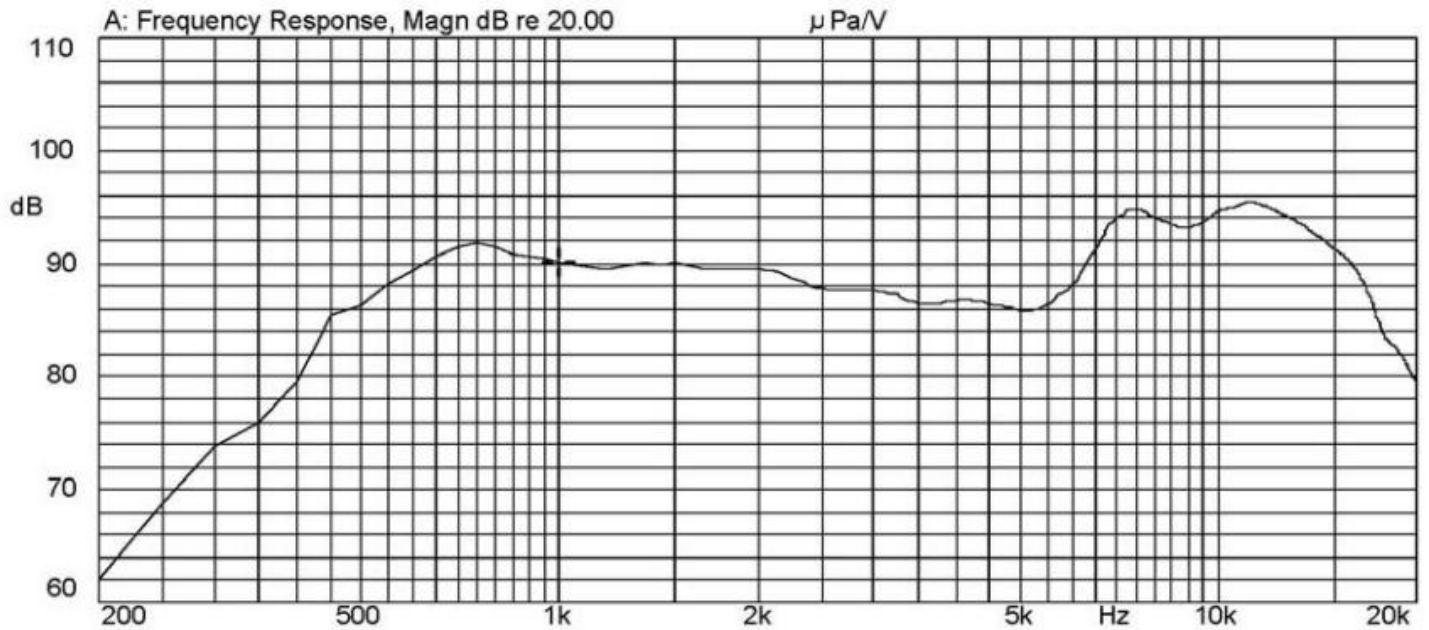
## Specifications

Parameters	Values	Units
Rated Input Power	1	Watts
Max Input Power	1.5	Watts
Impedance	8	Ohms
Output SPL (AT 0.8K, 1K, 1.2K, 1.5K Hz; 0.1W, 0.1m)	90±3	dB
Resonant Frequency (at 1V)	670±20%	Hz
Frequency Range (based on -10 dB limits on frequency response graph)	670 ~ 20KHz	Hz
THD (at 1KHz, 0.1W)	< 5%	
Magnet Material	NdFeB	-
Diaphragm Material	PEN	-
Weight	3	Grams
Buzz, Rattle, etc.	Not be audible at 2.0 V sine wave, 670 ~ 20 KHz	-
Environmental Compliances	ROHS/REACH	-
Polarity	When a positive D.C current is applied to the voice coil terminal marked (+), the diaphragm shall move forward	-
Storage Temperature	-40°C ~ +70°C	°C
Operating Temperature	-40°C ~ +60°C	°C

## Measurement Method (0.1m, 0.1W)



## Typical Frequency Response (0.1m, 0.1W)

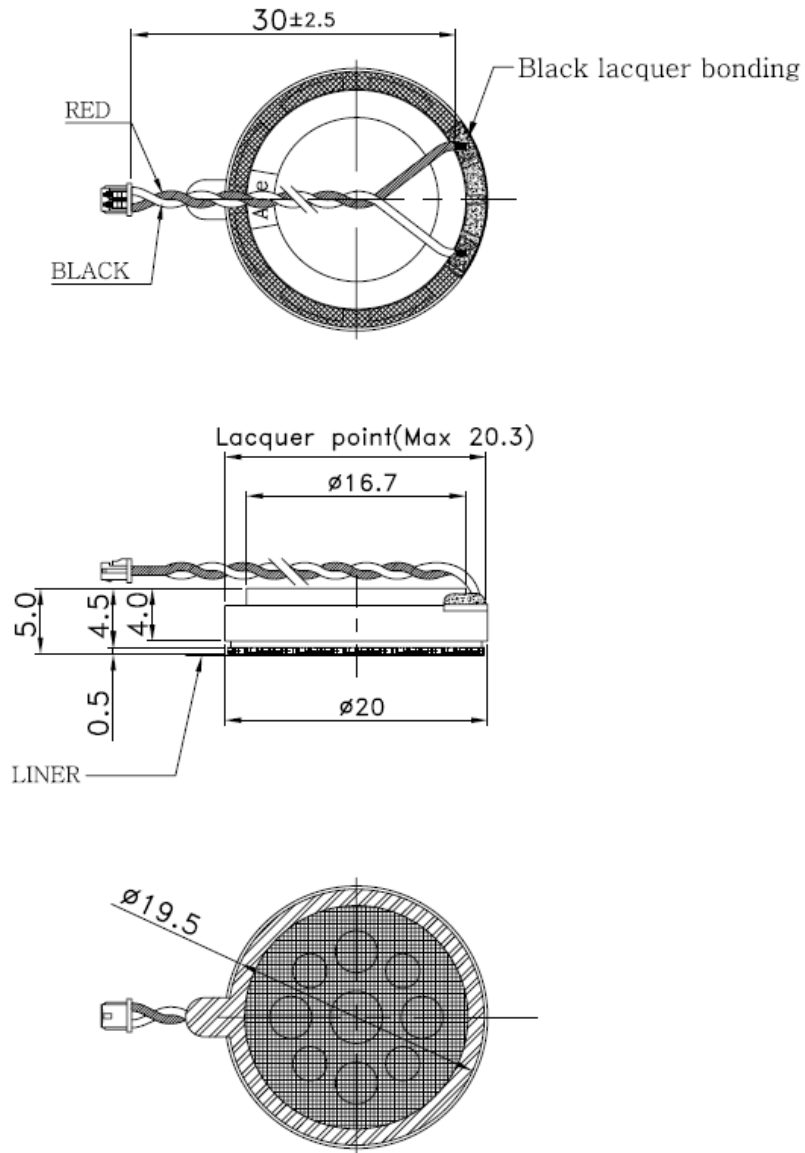


## Reliability Testing

Type of Test	Test Specifications
High Temperature Test	96 hours at 85°C, then 6 hours at room temperature
Low Temperature Test	96 hours at -40°C, then 6 hours at room temperature
Humidity Test	+40°C with 90% of RH, then 6 hours at room temperature.
Drop Test	Drop from a height of 1m onto concrete surface.
Load Test	White noise at 1 W. / (2.83V) for 96 hours.

**After tests, SPL shall not deviate within  $\pm 3$ dB from pre-test measurements.**

## Dimensions



## NOTE

- 1.WIRE:(UL1571/AWG30)
- 2.COLOR:(RED/BLACK)
- 3.CONNECTOR:(H:51021-0200)

## Packaging

1 tray 100 pcs  
1 box 25 trays  
1 box 2,500 pcs

### Specifications Revisions

Revision	Description	Date	Approved
A	Released from Engineering	11/4/2025	JD

Note:

- Unless otherwise specified:
  - All dimensions are in millimeters.
  - Default tolerances are  $\pm 0.5\text{mm}$  and angles are  $\pm 3^\circ$ .
- Specifications subject to change or withdrawal without notice.