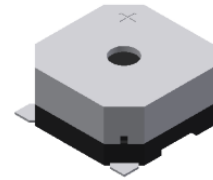




PUI audio



Data Sheet

SMT-0840-T

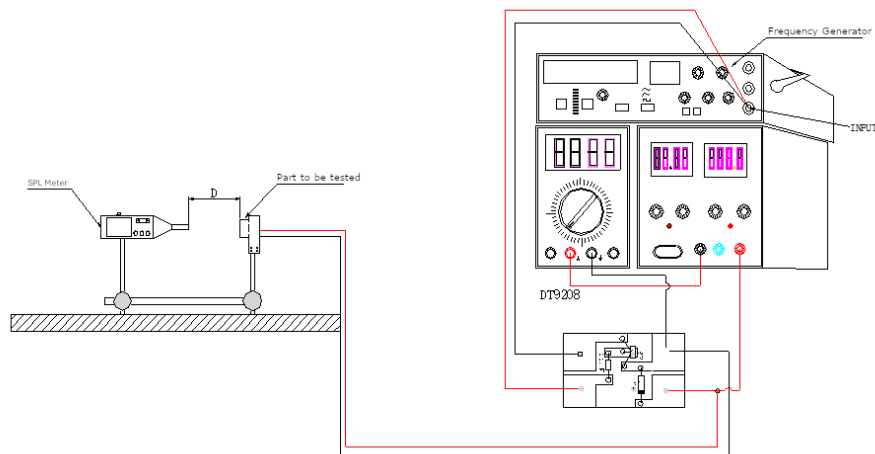
Key Features

- Top Firing Surface mount
- 100dB, 4kHz ½ duty square wave
- Electromagnetic
- Externally driven

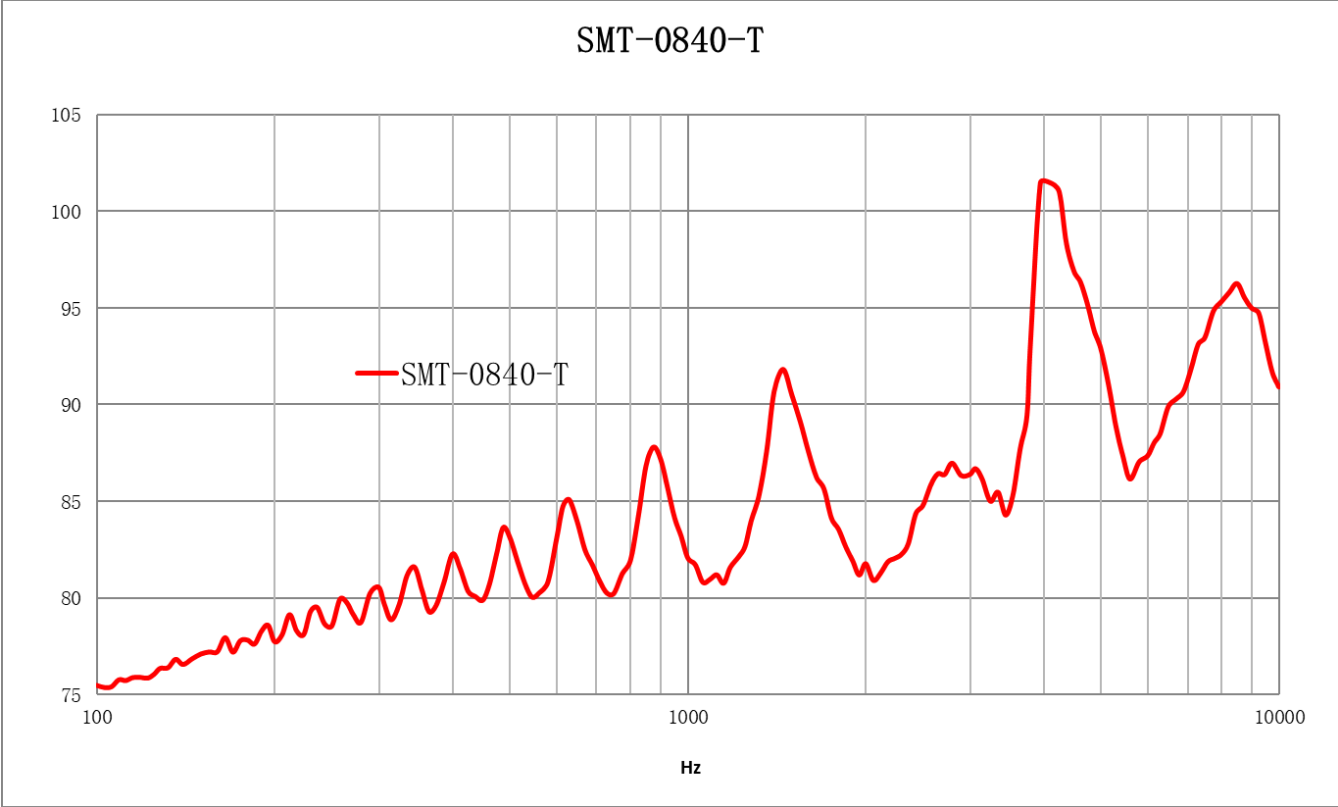
Specifications

Parameters	Values	Units
Rated Voltage	5	V _{0-pk}
Operating Voltage Range	1 ~ 6	V _{0-pk}
Current Draw at Rated Voltage	150 (Max.)	mA
Coil Resistance	15 ± 3	Ohms
Minimum SPL @ 10cm	100	dBA
Resonant Frequency	4,000	Hz
Housing Material	LCP (Black)	-
Terminal Material	Brass	-
Weight	0.6	Grams
Acceptable Soldering Methods	Reflow Solder	See following pages
Moisture Sensitivity Level (MSL)	2A	-
Environmental Compliances	ROHS/REACH	-
Storage Temperature	-40 ~ 85	°C
Operating Temperature	-40 ~ 85	°C

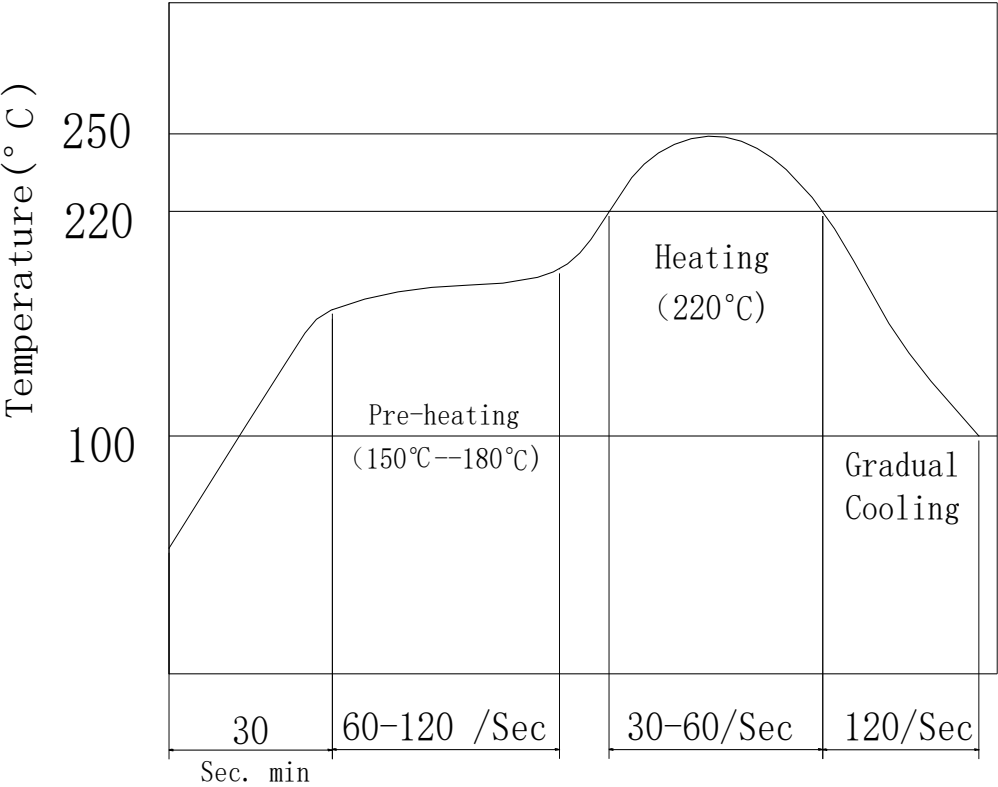
Measurement Method (5V_{pk}, 4kHz)



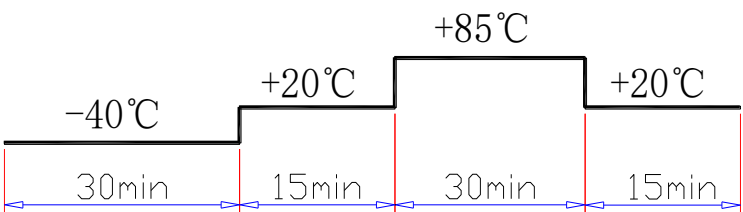
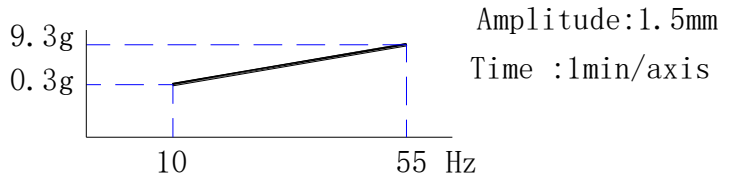
Typical Response Curve (5Vpk square wave, 10cm)



Recommended Reflow Procedure

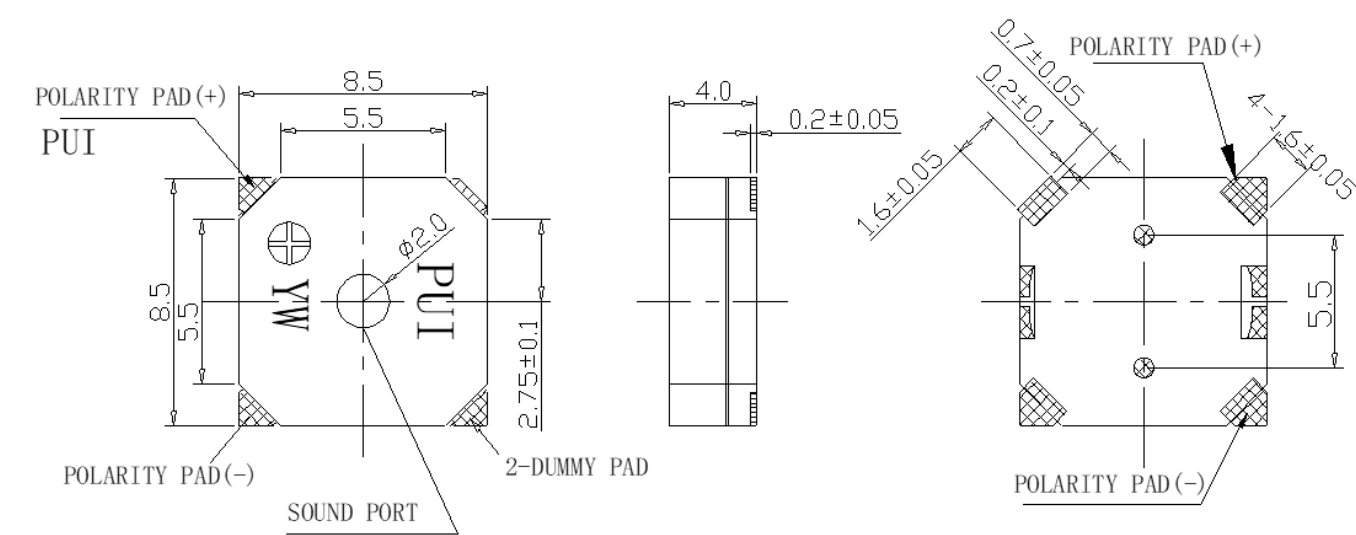


Reliability Testing

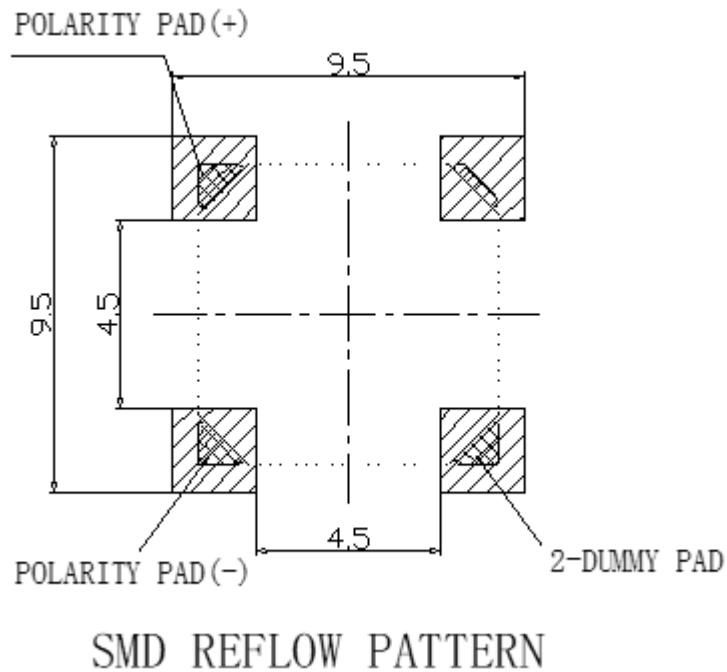
Type of Test	Test Specifications
High Temperature Test	96 hours at 85 ± 2°C
Low Temperature Test	96 hours at -40 ± 2°C
Humidity Test	96 hours at 40 ± 2°C with relative humidity at 90~95%
Temperature Cycle Testing	Run for 5 cycles with each cycle consisting of: 
Vibration Test	 Amplitude:1.5mm Time :1min/axis
Drop Test	Make this test for 2 hours in each of the X, Y, and Z directions Free drop a unit from the height 100cm to the surface of 10mm thick board ,three directions(X,Y,Z).

After these tests, let rest for 2 hours and then the change of S.P.L shall be within ±5 dB .

Dimensions (Tolerances ±0.5mm unless otherwise specified)

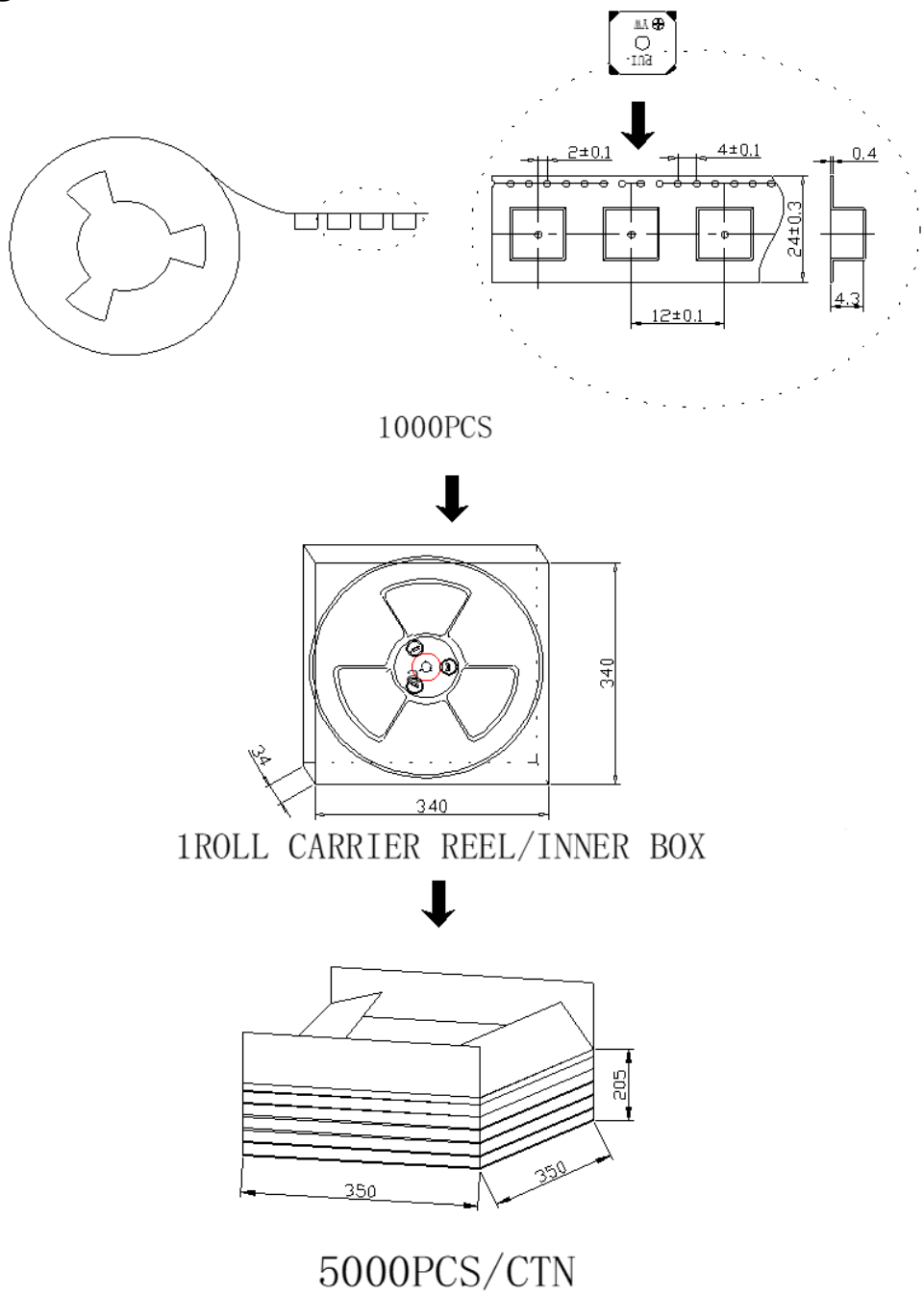


Suggested Land Pattern*



*This land pattern is advisory only and its use or adaptation is entirely voluntary. PUI Audio disclaims all liability of any kind associated with the use, application, or adaptation of this land pattern.

Packaging



Specifications Revisions			
Revision	Description	Date	Approved
A	Released from Engineering	03/16/2023	-
B	Add MSL 2A	03/19/2025	ML

- Note:
- 1. Unless otherwise specified:
 - A. All dimensions are in millimeters.
 - B. Default tolerances are ±0.5mm and angles are ±3°.
 - 2. Specifications subject to change or withdrawal without notice.