



620 SERIES

8mm Heavy Duty Bi- and Tri-Color Panel Mount Indicators

MECHANICAL / SPECIFICATIONS

MOUNTING HOLE SIZE:

.323" (8.2mm)

MAX PANEL THICKNESS:

.197" (5mm)

MOUNTING TORQUE:

8 lbs-in (1Nm)

OPERATING VOLTAGE:

3VDC, 12VDC, 24VDC

OPERATING TEMP:

-40°C-70° (-40°F-158°F)

STORAGE TEMP:

-40°C-70° (-40°F-158°F)

ELECTRICAL CONNECTION:

26AWG UL 1007 wire leads

Common cathode

HOUSING:

Stainless steel

NUTS:

Stainless steel

CERTIFICATIONS & RATINGS

RoHS compliant

IP67

IK10

FEATURES & BENEFITS

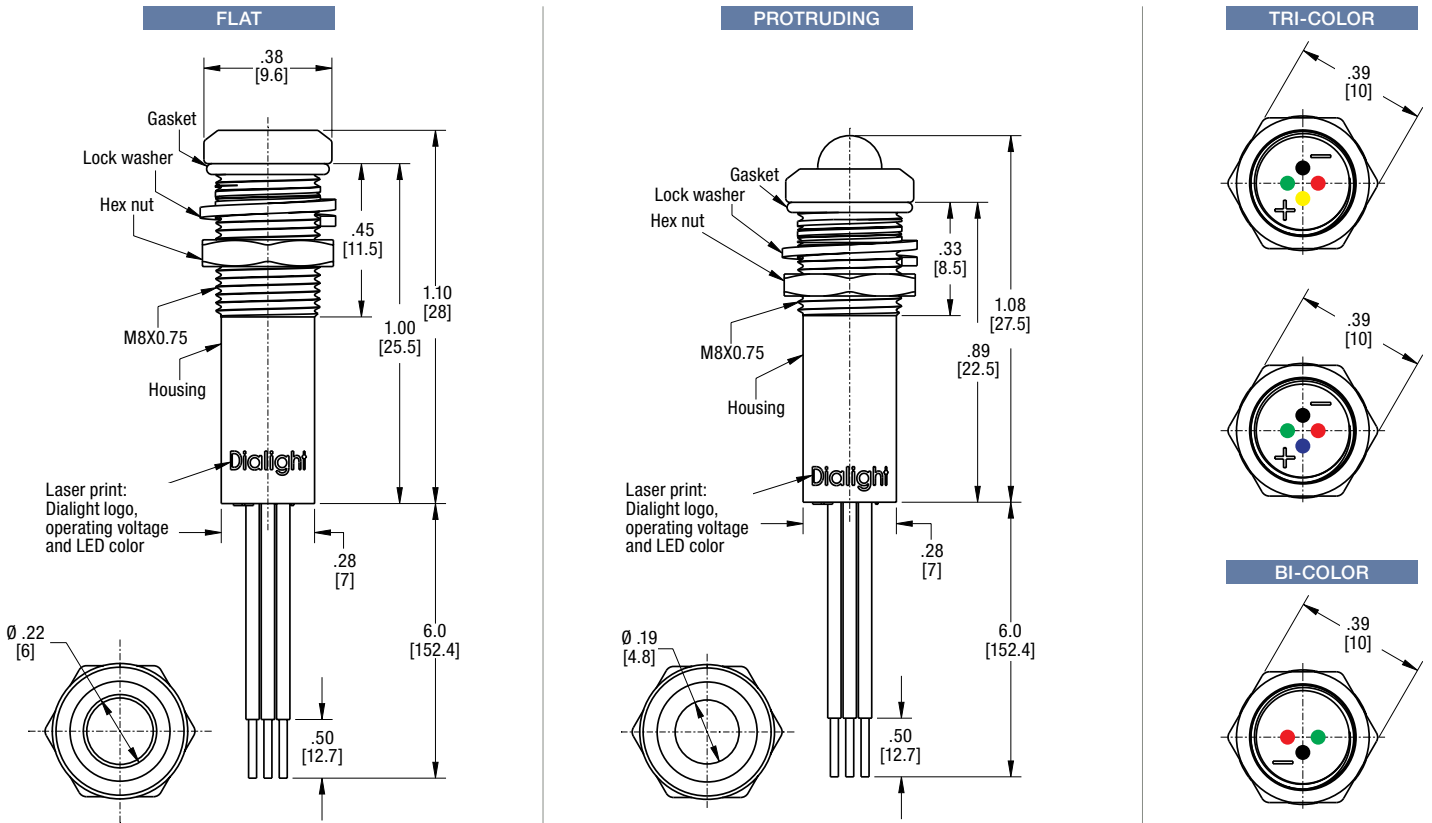
- RoHS Compliant
- IP67 rating
- IK10 rating
- Bi-color and tri-color options
- High brightness level for increasing visibility

APPLICATION

The 620 Series Heavy Duty LED Panel Mount Indicators are elegantly designed for a high-end aesthetic paired with sturdy construction. These indicators are non-magnetic, corrosion resistant for both indoor and outdoor use, and secured to prevent dirt, dust, and water penetration. Ideal for a variety of applications such as:

- Main power indication
 - Remote power indication
 - Status indication
 - Maintenance and warning indication
 - Instrumentation
- ... and many more!

DIMENSIONS inches [mm]



LED Type	Black Wire	Red Wire	Green Wire	Yellow/Blue Wire
Tri-Color (RGY)	Common Cathode	Red Anode	Green Anode	Yellow Anode
Tri-Color (RGB)	Common Cathode	Red Anode	Green Anode	Blue Anode
Bi-Color (RG)	Common Cathode	Red Anode	Green Anode	N/A

ORDERING INFORMATION

Part Number	Color	Voltage (VDC)	Lens	Current (mA)	Typical Intensity (mcd)
620-1141-317F	Tri-Color ● Red ● Green ● Yellow	3V	Transparent, Flat	15mA	1200
620-1143-317F		12V			2500
620-1144-317F		24V			800
620-1121-317F	Tri-Color ● Red ● Green ● Blue	3V			1000
620-1123-317F		12V			1500
620-1124-317F		24V			700
620-1141-117F	Tri-Color ● Red ● Green ● Yellow	3V	Transparent, Protruding		5000
620-1143-117F		12V			3000
620-1144-117F		24V			6500
620-1121-117F	Tri-Color ● Red ● Green ● Blue	3V			5000
620-1123-117F		12V			4000
620-1124-117F		24V			2000
620-1111-317F	Bi-Color ● Red ● Green	3V	Transparent, Flat		1000 1500
620-1113-317F		12V			
620-1114-317F		24V			
620-1111-117F	Bi-Color ● Red ● Green	3V	Transparent, Protruding		1000 1500
620-1113-117F		12V			
620-1114-117F		24V			



Dialight reserves the right to make changes at any time in order to supply the best product possible. The most current version of this document will always be available at:

www.dialightsignalsandcomponents.com

Warranty Statement: Except for the warranty expressly provided for at: www.dialight.com/resources/warranties/, Dialight disclaims any and all other warranties, express or implied, including, without limitation, any warranties of merchantability, fitness for a particular purpose, title, and noninfringement.