



612 SERIES 12 mm Panel Mount Indicators

MECHANICAL / SPECIFICATIONS

MOUNTING HOLE SIZE:

0.492" (12.5 mm)

MAX PANEL THICKNESS:

0.236" (6.0 mm)

MOUNTING TORQUE:

0.217 lbs/ft (3 kg/cm)

VOLTAGE OPTIONS:

6, 12 & 24VDC (no resistor required)

OPERATING TEMP:

-25 °C to +85 °C (-13 °F to +185 °F)

STORAGE TEMP:

-25 °C to +100 °C (-13 °F to +212 °F)

ELECTRICAL CONNECTION:

Solder terminals

HOUSING:

Polycarbonate

TERMINALS:

Copper—Nickel Plated

LOCK WASHER:

Iron—Nickel Plated

NUT:

Brass—Nickel Plated

CERTIFICATIONS & RATINGS

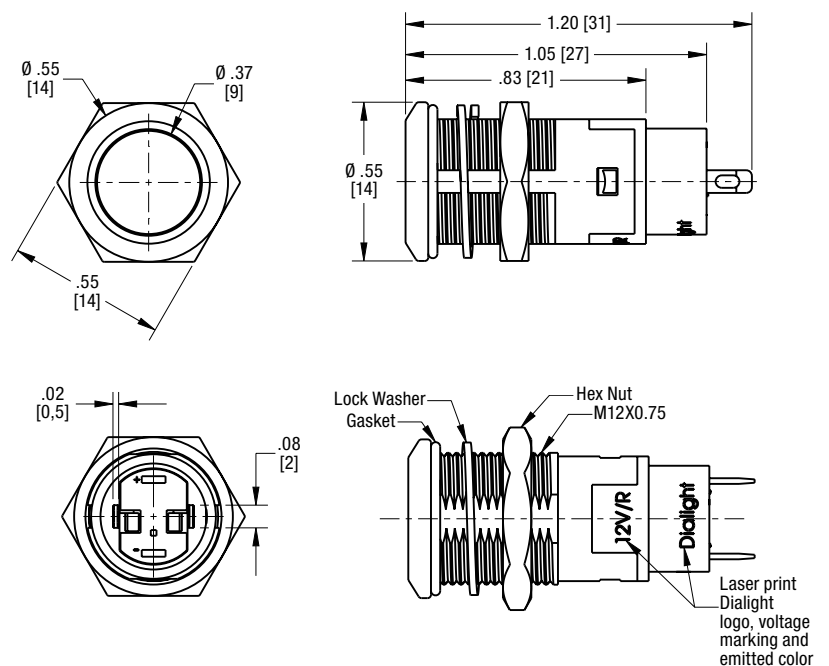
RoHS compliant

APPLICATION

The 612 Series LED Panel Mount Indicators are designed for a variety of applications such as:

- Main power indication
- Remote power indication
- Status indication
- Maintenance and warning indication
- Instrumentation

DIMENSIONS inches [mm]



These indicators are un-polarized

ORDERING INFORMATION

Part Number	Color	Voltage (V DC)	Current (mA)	Intensity Typ. (mcd)
612-3132-120F	● Red	6	15	65
612-3232-120F	● Green			110
612-3332-120F	● Yellow			80
612-3132-130F	● Red	12		65
612-3232-130F	● Green			110
612-3332-130F	● Yellow			80
612-3132-140F	● Red	24		65
612-3232-140F	● Green			110
612-3332-140F	● Yellow			80



Dialight reserves the right to make changes at any time in order to supply the best product possible. The most current version of this document will always be available at: www.dialightsignalsandcomponents.com

Warranty Statement: Except for the warranty expressly provided for at: www.dialight.com/resources/warranties/, Dialight disclaims any and all other warranties, express or implied, including, without limitation, any warranties of merchantability, fitness for a particular purpose, title, and noninfringement.