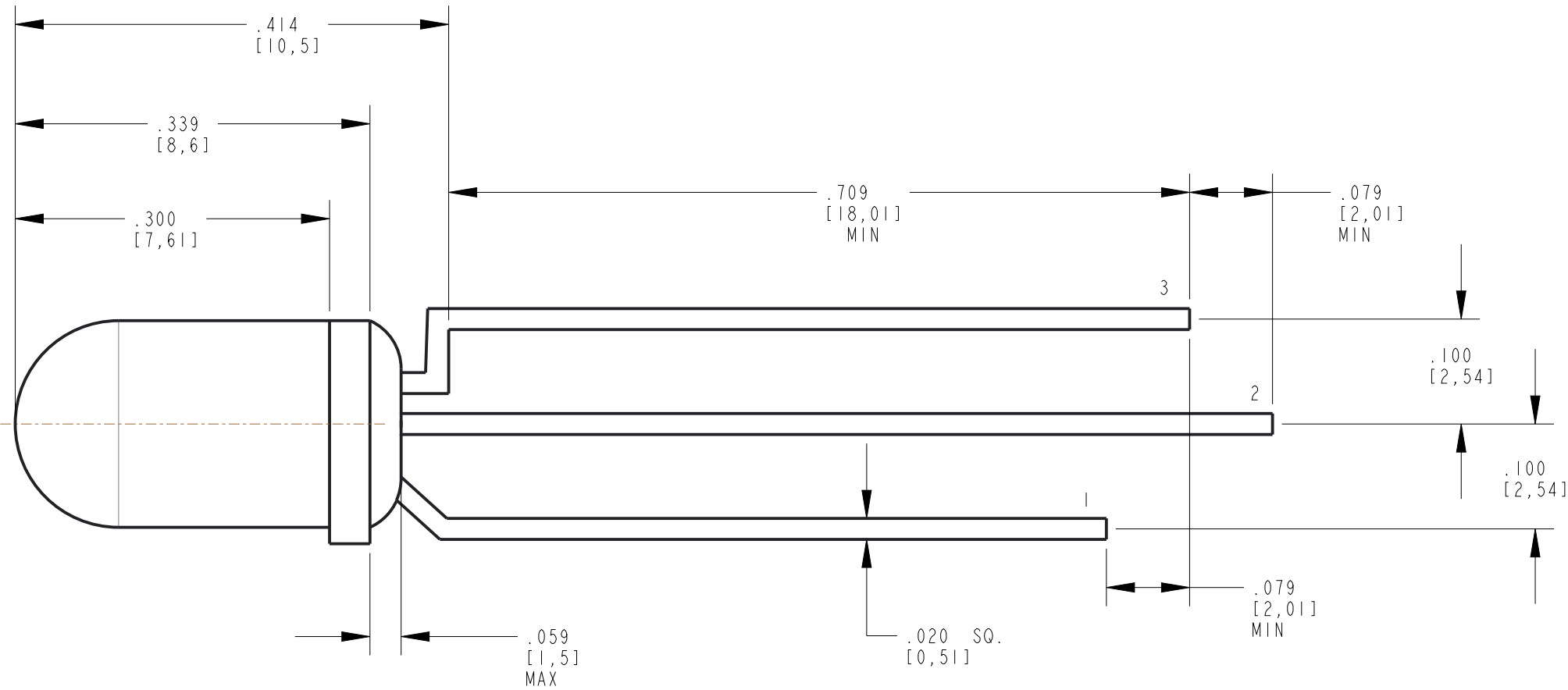
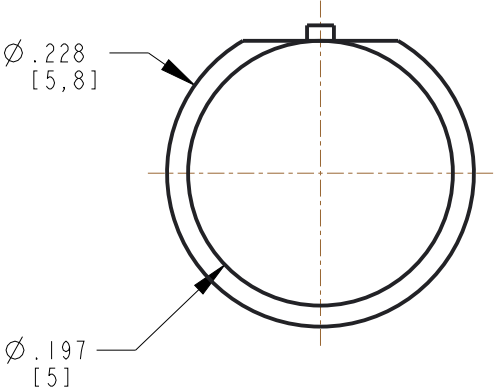


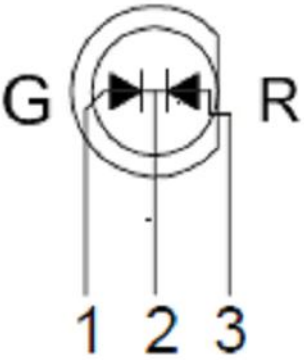
REV	ECN NO	REVISIONS	DRN	CKD	APP	QA	CM	DATE
A	127925	NEW RELEASE	LD	CS				2-26-25
B	130712	ADDED HOLE PATTERN	LD	CS				6-11-25



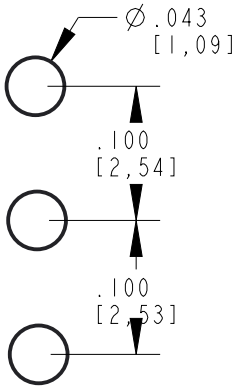
OPERATING CHARACTERISTICS AT 25°C AMBIENT										
LED COLOR	DOMINANT WAVELENGTH (nm)			LUMINOUS INTENSITY (mcd) @ I <sub>F</sub> =20mA			FORWARD VOLTAGE (V) @ I <sub>F</sub> =20mA			VIEWING ANGLE (DEG)
	MIN	TYP	MAX	MIN	TYP	MAX	MIN	TYP	MAX	
RED		630		1100		1800	1.5		2.4	40
GREEN		574		450		470	1.7		2.6	40

ABSOLUTE MAXIMUM RATINGS AT 25°C AMBIENT	RED	GREEN	UNITS
POWER DISSIPATION	75	75	mW
PEAK FORWARD CURRENT (1/10 DUTY CYCLE, 10ms PULSE WIDTH)	90	60	mA
CONTINUOUS FORWARD CURRENT	30	30	mA
LEAD SOLDERING TEMPERATURE (.079" [2mm] FROM BODY) FOR 5 SEC.	260		°C
OPERATING TEMPERATURE	-40 TO +85		°C
STORAGE TEMPERATURE	-40 TO +100		°C

LED SCHEMATIC




1. GREEN ANODE  
2. COMMON CATHODE  
3. RED ANODE



RECOMMENDED HOLE PATTERN

NOTES:

- DIALIGHT PART NO: 521-8739F
- THIS ASSEMBLY CONTAINS ELECTROSTATIC DISCHARGE SENSITIVE DEVICES (ESDS). MAINTAIN ALL PRECAUTIONARY MEASURES DURING ASSEMBLY, HANDLING AND STORAGE IN ACCORDANCE WITH IPC-A-610.
- THIS PRODUCT IS RoHS COMPLIANT. EACH BAG MUST BE MARKED WITH RoHS COMPLIANT LABEL OR EQUIVALENT MARKINGS. LED MUST BE Pb FREE (RoHS COMPLIANT).

THIS DRAWING AND THE CONTENTS HEREIN ARE CONFIDENTIAL AND THE SOLE PROPERTY OF DIALIGHT CORP. REPRODUCTION OF THIS DRAWING OR CONSTRUCTION OF ANY PARTS WITHIN THIS DRAWING ARE FORBIDDEN WITHOUT THE WRITTEN CONSENT OF DIALIGHT CORP.		
SCALE: 5.000	DRAWING NUMBER  C-18803	REV  B
ALL DIM's: INCH (mm)		
TOLERANCES: UNLESS OTHERWISE SPECIFIED	TITLE  R/G 5mm WATER CLEAR LED	
FRACTIONS: ±1/64 DECIMALS (.XX): ±.01 DECIMALS (.XXX): ±.010		
ANGLES: ±1°	MATERIAL	
FINISH  -		
FSCM 83330	*****  1501 ROUTE 34 SOUTH FARMINGDALE, NJ 07727 (732) 919-3119 www.dialight.com	
SHEET 1 OF 1 FAMILY TABLE:		

1501 ROUTE 34 SOUTH  
FARMINGDALE, NJ 07727  
(732) 919-3119  
www.dialight.com