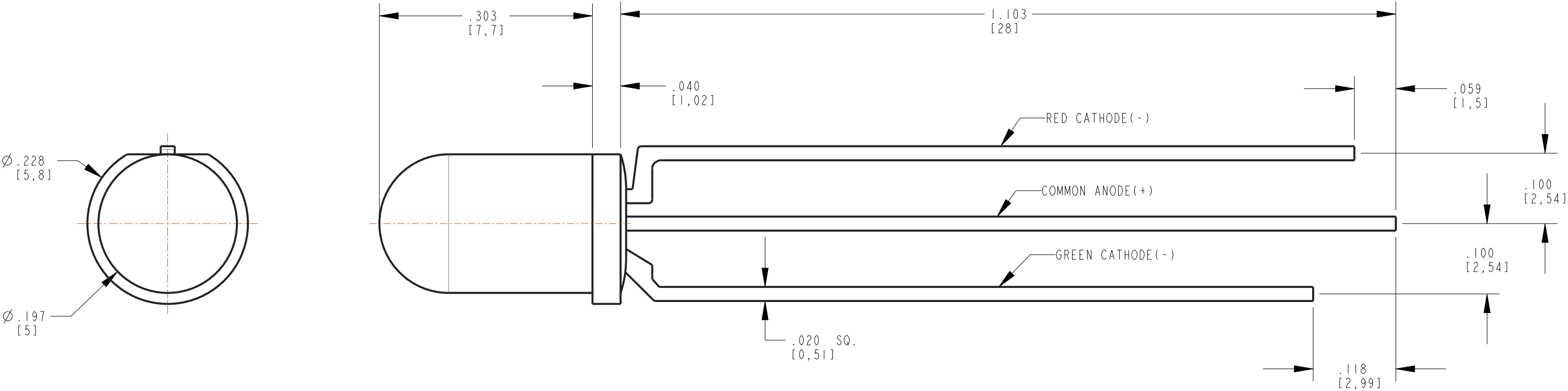
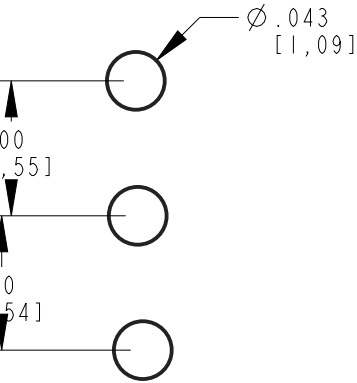


REV	ECN NO	REVISIONS	DRN	CKD	APP	QA	CM	DATE
A	127925	NEW RELEASE	LD	CS				2-26-25
B	130712	ADDED NOTE 4, HOLE PATTERN & PIN DIMENSIONS	LD	CS				6-11-25



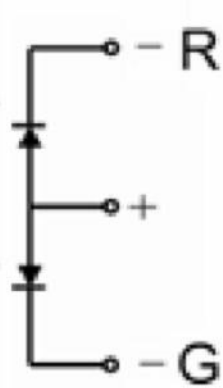
OPERATING CHARACTERISTICS AT 25°C AMBIENT										
LED COLOR	DOMINANT WAVELENGTH (nm)			LUMINOUS INTENSITY (mcd) @ I _F =20mA			FORWARD VOLTAGE (V) @ I _F =20mA			VIEWING ANGLE (DEG)
	MIN	TYP	MAX	MIN	TYP	MAX	MIN	TYP	MAX	TYP
RED	620		630	2000		5000	1.8		2.4	25
GREEN	520		530	7000		14000	2.8		3.4	25

ABSOLUTE MAXIMUM RATINGS AT 25°C AMBIENT			
POWER DISSIPATION	75	95	mW
PEAK FORWARD CURRENT (1/10 DUTY CYCLE, 10ms PULSE WIDTH)	50	50	mA
CONTINUOUS FORWARD CURRENT	30	30	mA
LEAD SOLDERING TEMPERATURE (.079" [2mm] FROM BODY) FOR 5 SEC.	260		°C
OPERATING TEMPERATURE	-40 TO +80		°C
STORAGE TEMPERATURE	-40 TO +100		°C



RECOMMENDED HOLE PATTERN

LED SCHEMATIC



NOTES:

- DIALIGHT PART NO: 521-8738F
- THIS ASSEMBLY CONTAINS ELECTROSTATIC DISCHARGE SENSITIVE DEVICES (ESDS). MAINTAIN ALL PRECAUTIONARY MEASURES DURING ASSEMBLY, HANDLING AND STORAGE IN ACCORDANCE WITH IPC-A-610.
- THIS PRODUCT IS RoHS COMPLIANT. EACH BAG MUST BE MARKED WITH RoHS COMPLIANT LABEL OR EQUIVALENT MARKINGS. LED MUST BE Pb FREE (RoHS COMPLIANT).
- ESD RATING: HBM CLASSIC 1500 VOLTS

THIS DRAWING AND THE CONTENTS HEREIN ARE CONFIDENTIAL AND THE SOLE PROPERTY OF DIALIGHT CORP. REPRODUCTION OF THIS DRAWING OR CONSTRUCTION OF ANY PARTS WITHIN THIS DRAWING ARE FORBIDDEN WITHOUT THE WRITTEN CONSENT OF DIALIGHT CORP.		
SCALE: 5.000	DRAWING NUMBER C-18802	REV B
ALL DIM's: INCH (mm)		
TOLERANCES: UNLESS OTHERWISE SPECIFIED	TITLE R/G 5mm WATER CLEAR LED	
FRACTIONS: ±1/64		
DECIMALS (.XX): ±.01		
DECIMALS (.XXX): ±.005		
ANGLES: ±1°	MATERIAL	
FINISH -		
FSCM 83330	<div>Dialight</div> <div>*****</div> <div>1501 ROUTE 34 SOUTH FARMINGDALE, NJ 07727 (732) 919-3119 www.dialight.com</div>	
	SHEET 1 OF 1	FAMILY TABLE: