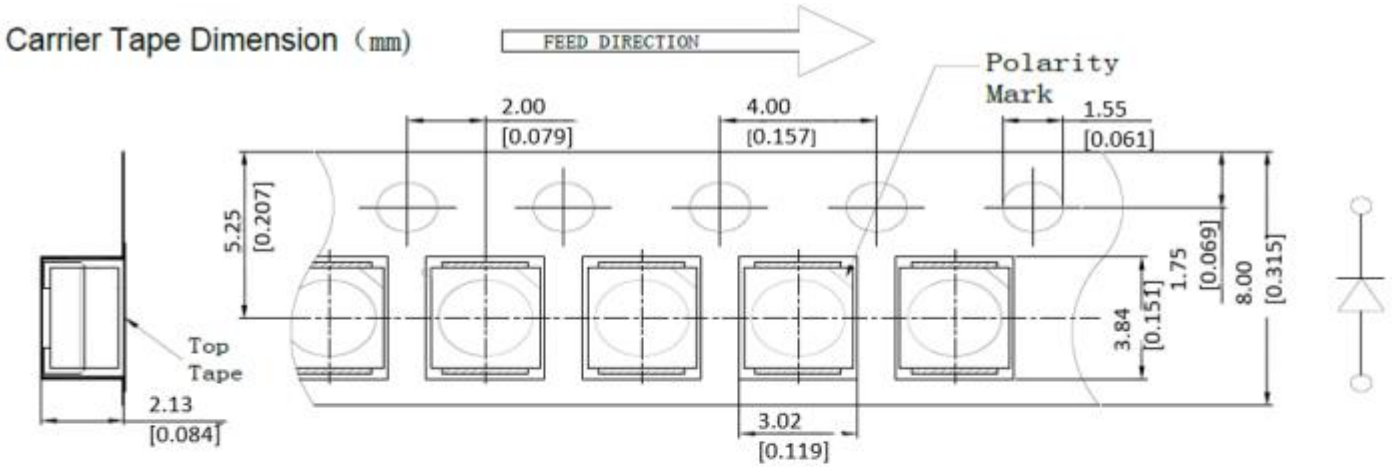
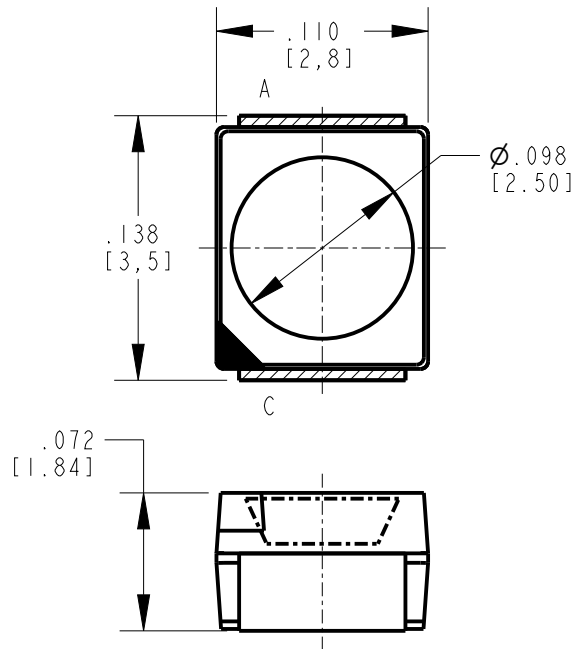


| DIALIGHT PART NO. | LED CHIP COLOR<br>TYP  |
|-------------------|------------------------|
| 598-2B00-107F     | WHITE<br>X=.281,Y=.247 |

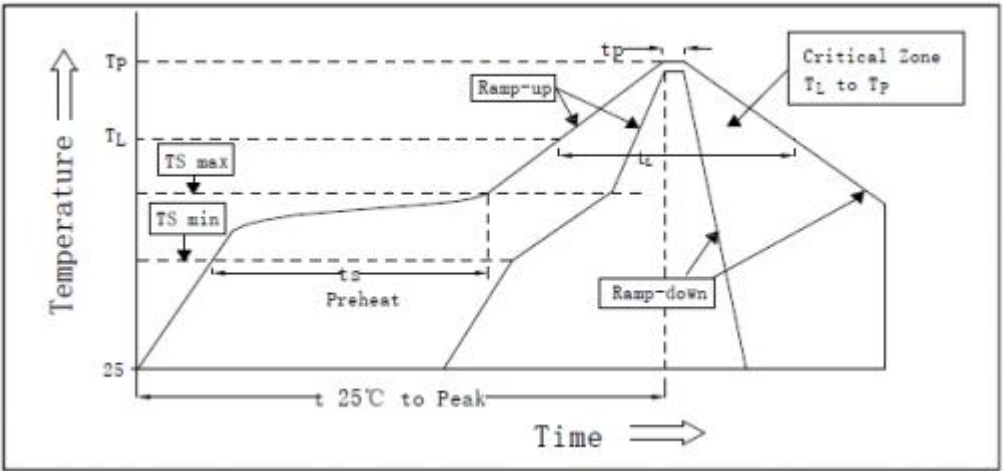
- NOTES:
- PARTS ARE TO BE SUPPLIED IN 8mm CARRIER TAPE ON 7" REEL  
2000 PCS PER REEL.
  - PIN NUMBERS ARE FOR REFERENCE ONLY, DESIGNATION NON  
EXISTENT ON PART.
  - LABELING FOR REEL AND OUTSIDE OF ALUMINUM BAG,  
DIALIGHT P/N, QUANTITY PER REEL, DATE CODE, INTENSITY BIN CODE,  
LOT NUMBER AND COUNTRY OF ORIGIN.
  - THIS PRODUCT IS ROHS COMPLIANT EACH BAG IS TO BE MARKED WITH ROHS  
COMPLIANT LABEL OR EQUIVALENT MARKINGS. LED MUST BE Pb FREE.
  - MOISTURE SENSITIVITY LEVEL IS 2.

| REV | ECN NO | REVISIONS   | DRN | CKD | APP | DATE    |
|-----|--------|-------------|-----|-----|-----|---------|
| A   | 110746 | NEW RELEASE | JSG | NO  | CS  | 10OCT23 |

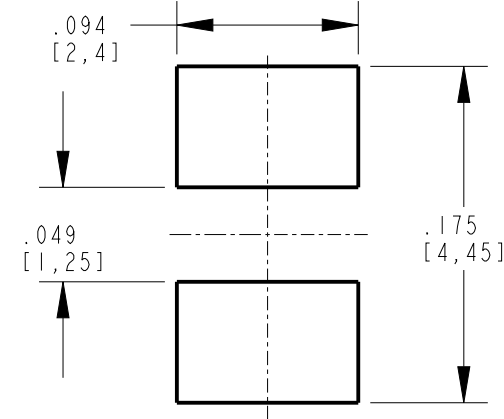
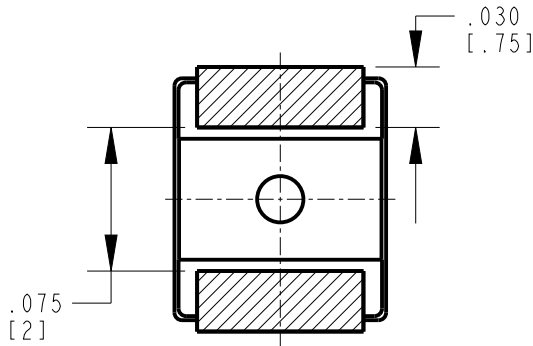


TOLERANCE (UNLESS OTHERWISE SPECIFIED):  $\pm 0.003 (\pm 0.1 \text{ mm})$

RECOMMENDED RoHS SOLDER PROFILE



| MARK       | DEFINITION                         | CONDITION      |
|------------|------------------------------------|----------------|
| $TS_{max}$ | MAXIMUM OF PRE-HEATING TEMPERATURE | 200°C          |
| $TS_{min}$ | MINIMUM OF PRE-HEATING TEMPERATURE | 150°C          |
| $T_s$      | TIME FORM $TS_{min}$ To $TS_{max}$ | 60s-120s       |
| $T_L$      | REFERENCE TEMPERATURE              | 217°C          |
| $t_L$      | RETENTION TIME FOR $T_L$           | 60s-150s       |
| $T_P$      | PEAK TEMPERATURE                   | 260°C          |
| $t_P$      | TIME FOR PEAK TEMPERATURE          | WITHIN 10s     |
| $DTr/Dt$   | TEMPERATURE RISING RATE            | WITHIN 3°C/sec |
| $DTd/Dt$   | TEMPERATURE DECREASING RATE        | WITHIN 6°C/sec |



RECOMMENDED SOLDER PAD LAYOUT

Reel Dimension

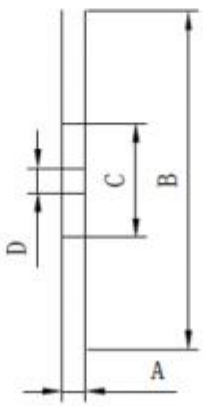
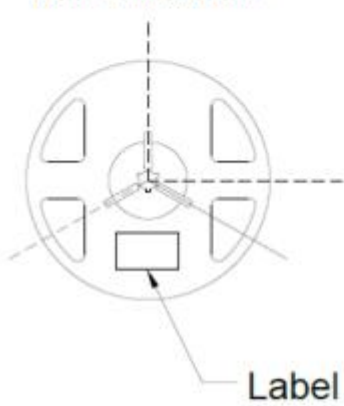


Table : Reel Dimension

|   |            |
|---|------------|
| A | 8.0±0.1mm  |
| B | 178±1mm    |
| C | 60±1mm     |
| D | 13.0±0.5mm |

| ABSOLUTE MAXIMUM RATINGS AT 25°C |                       |                      |                           |                            |                         |                                  |                             |
|----------------------------------|-----------------------|----------------------|---------------------------|----------------------------|-------------------------|----------------------------------|-----------------------------|
| LED COLOR                        | POWER DISSIPATON (mW) | FORWARD CURRENT (mA) | PEAK FORWARD CURRENT (mA) | OPERATING TEMPERATURE (°C) | STORAGE TEMPRATURE (°C) | DERATING CURVE FROM 85°C (mA/°C) | ELECTROSTATIC DISCHARGE (V) |
| WHITE                            | 91                    | 30                   | 100                       | -40°C TO +100°C            | -40°C TO +100°C         | 0.666                            | 2000                        |

| OPERATING CHARACTERISTICS AT 25°C AMBIENT |                     |                          |     |                     |     |     |                          |                      |                         |                         |     |
|---|---------------------|--------------------------|-----|---------------------|-----|-----|--------------------------|----------------------|-------------------------|-------------------------|-----|
| LED COLOR                                 | TEST CONDITION (mA) | LUMINOUS INTENSITY (mcd) |     | FORWARD VOLTAGE (V) |     |     | CHROMATICITY COORDINATES | REVERSE CURRENT (uA) | VIEWING ANGLE (DEGREES) | THERMAL RESISTANCE °C/W |     |
|   | TYP                 | MIN                      | TYP | MAX                 | MIN | TYP | MAX                      | TYP                  | MAX                     | TYP                     | MAX |
| WHITE                                     | 3mA                 | 23                       | 37  | 53                  | 2.5 | 2.7 | 3.1                      | *X=0.281<br>Y=0.247  | 10µA @<br>VR=5V         | 120                     | 300 |

\*CALCULATED



**ATTENTION:**  
OBSERVE PRECAUTIONS FOR  
HANDLING ELECTROSTATIC  
SENSITIVE DEVICES

|  |  |  |  |
|--|--|--|--|
| THIS DRAWING AND THE CONTENTS HEREIN ARE CONFIDENTIAL AND THE SOLE<br>PROPERTY OF DIALIGHT CORP. REPRODUCTION OF THIS DRAWING OR<br>CONSTRUCTION OF ANY PARTS WITHIN THIS DRAWING ARE FORBIDDEN WITHOUT<br>THE WRITTEN CONSENT OF DIALIGHT CORP. |  |  |  |
| DIALIGHT CORP. INTERNAL REFERENCE ONLY = 3D MODEL : 4500521862923- .1  |  |  |  |
| SCALE: 25.000  |  | DRAWING NUMBER   |  |
| ALL DIM's: INCH (mm)   |  | REV  |  |
| TOLERANCES:<br>UNLESS OTHERWISE SPECIFIED  |  | A  |  |
| FRACTIONS: ±1/64   |  | SM PLCC2 WHITE 3mA   |  |
| DECIMALS (.XX): ±.01   |  |  |  |
| DECIMALS (.XXX): ±.005   |  |  |  |
| DECIMALS (.XXXX): ±.0005   |  |  |  |
| ANGLES: ±1°  |  | -  |  |
| FINISH   |  | -  |  |
| FSCM 83330   |  | Dialight   |  |
|  |  | 1501 ROUTE 34 SOUTH<br>FARMINGDALE, NJ 07727<br>(732) 919-3119<br>www.dialight.com |  |
|  |  | SHEET 1 OF 1 FAMILY TABLE:   |  |