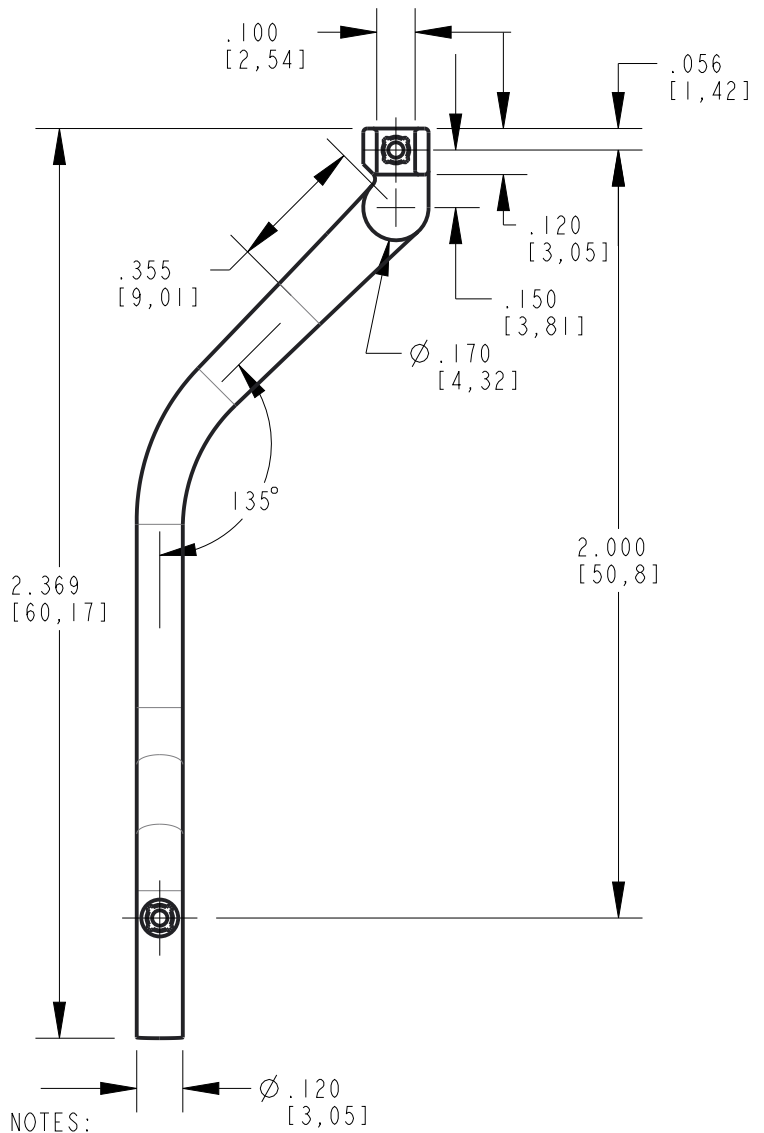
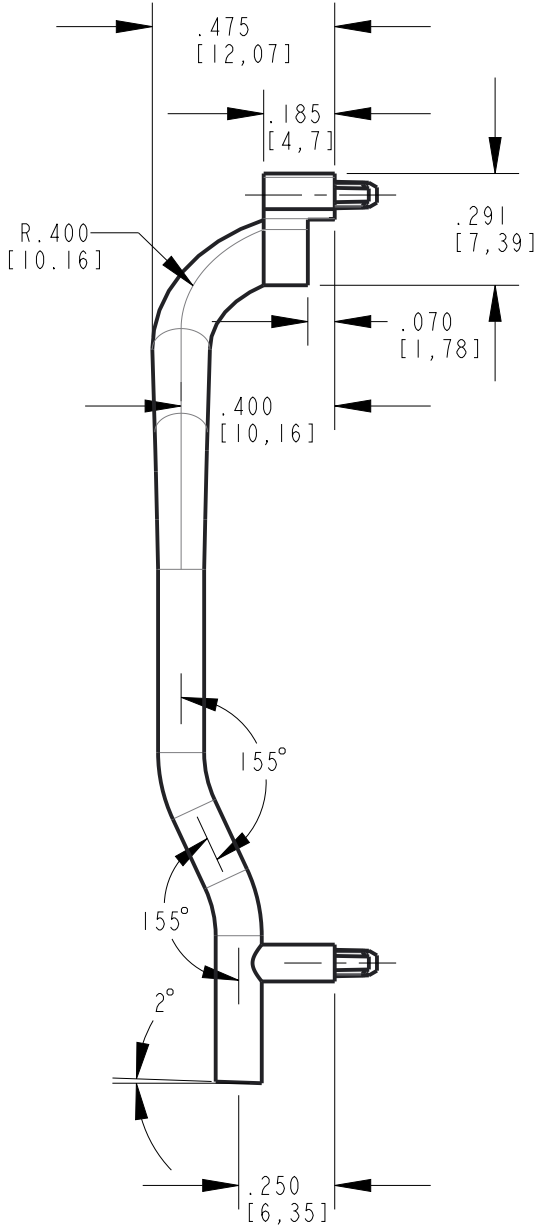
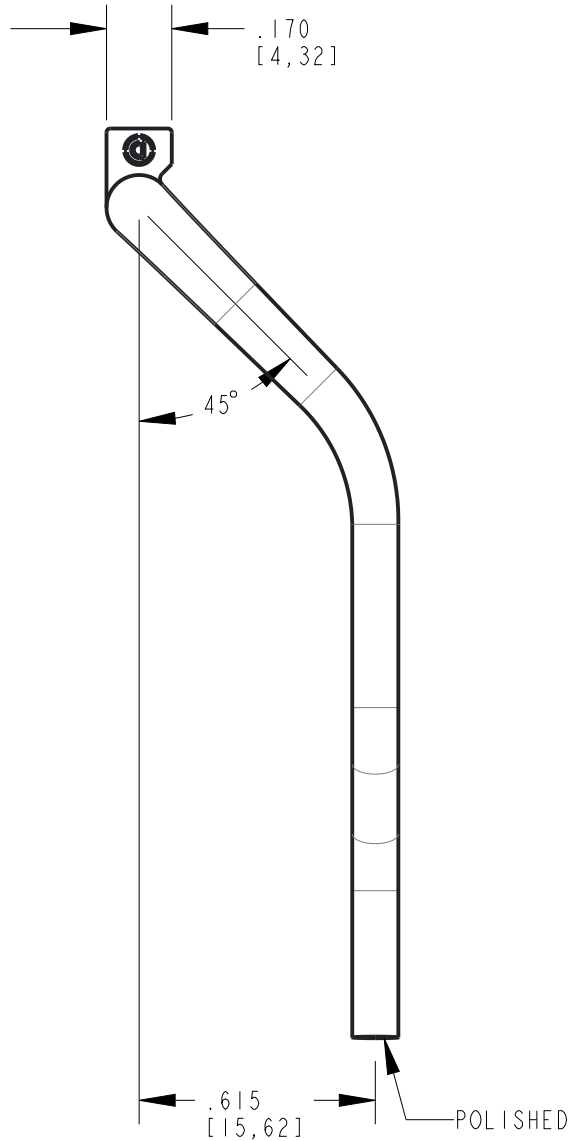
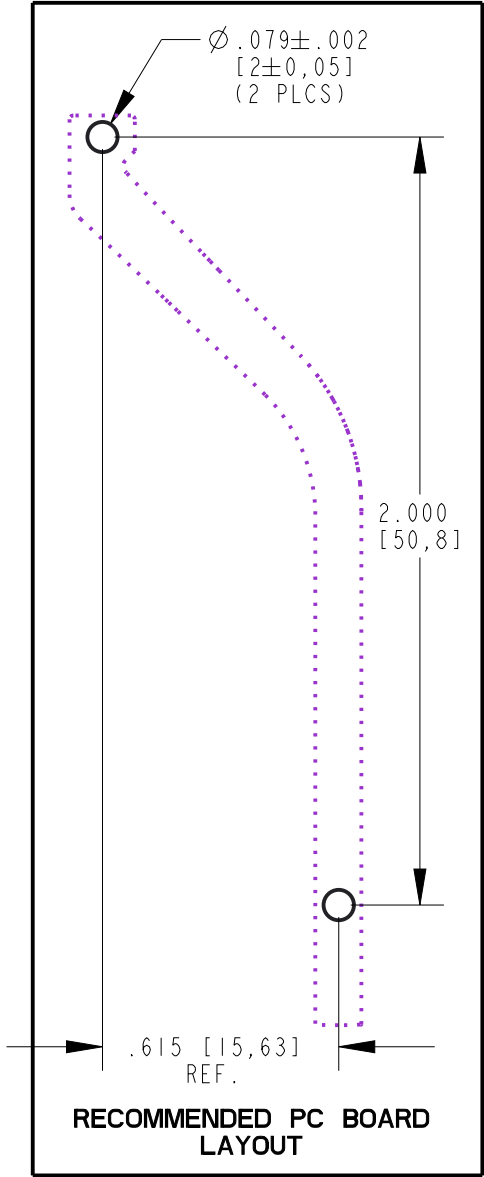
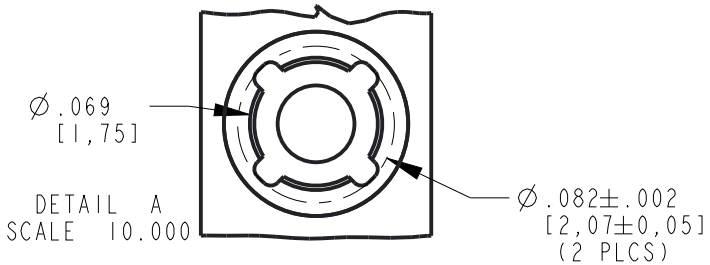
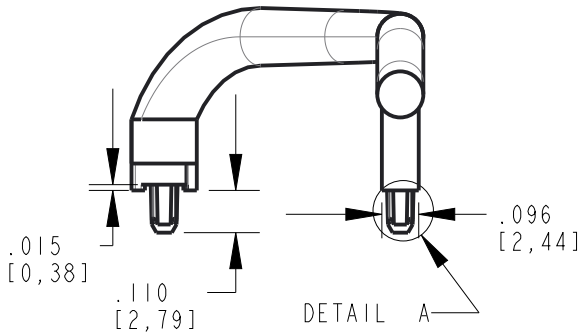
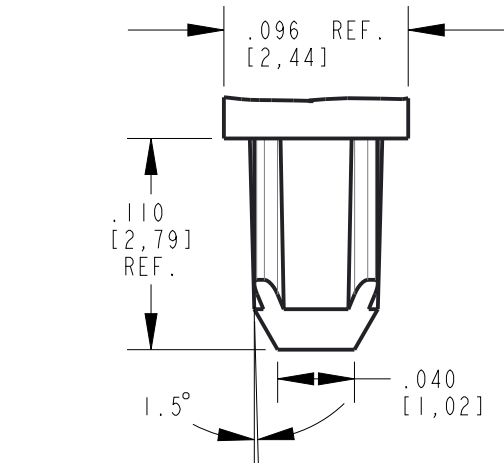
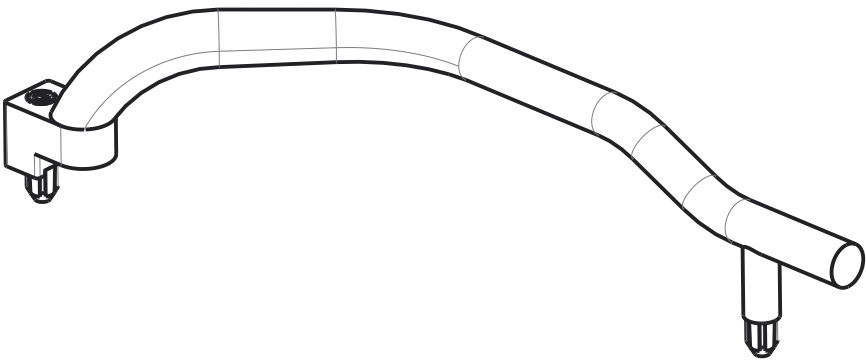


REV	ECN NO	REVISIONS	DRN	CKD	APP	QA	CM	DATE
A	96965	NEW RELEASE	LD					



1. KNOCKOUT PROJECTIONS OR RECESSES NOT TO EXCEED .005.
2. FLASH NOT TO EXCEED .003.
3. SINK MARKS NOT TO EXCEED .005 UNLESS OTHERWISE SPECIFIED.
4. NO BUBBLES IN CRITICAL LIGHTPATH GREATER THAN .005".
5. UNLESS OTHERWISE SPECIFIED, ALL SURFACES MUST HAVE FINISH OF SPI A2 TO B1.
6. DIALIGHT LIGHTPIPE PART NUMBER: 515-1136F.



THIS DRAWING AND THE CONTENTS HEREIN ARE CONFIDENTIAL AND THE SOLE PROPERTY OF DIALIGHT CORP. REPRODUCTION OF THIS DRAWING OR CONSTRUCTION OF ANY PARTS WITHIN THIS DRAWING ARE FORBIDDEN WITHOUT THE WRITTEN CONSENT OF DIALIGHT CORP.		
DIALIGHT CORP. INTERNAL REFERENCE ONLY = 3D MODEL : 5151136-B.3		
SCALE: 2.000	DRAWING NUMBER	REV
ALL DIM's: INCH (mm)	C-18602	A
TOLERANCES: UNLESS OTHERWISE SPECIFIED	TITLE	
FRACTIONS: ±1/64	LIGHTPIPE, RIGHT SIDE	
DECIMALS (.XX): ±.01	MATERIAL	
DECIMALS (.XXX): ±.005		
DECIMALS (.XXX): ±.0005		
ANGLES: ±1°		
FINISH		
FSCM 83330		
SHEET 1 OF 1	FAMILY TABLE:	