

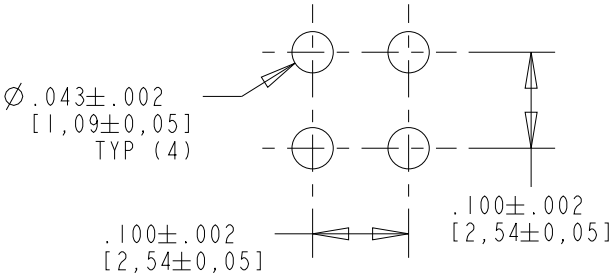
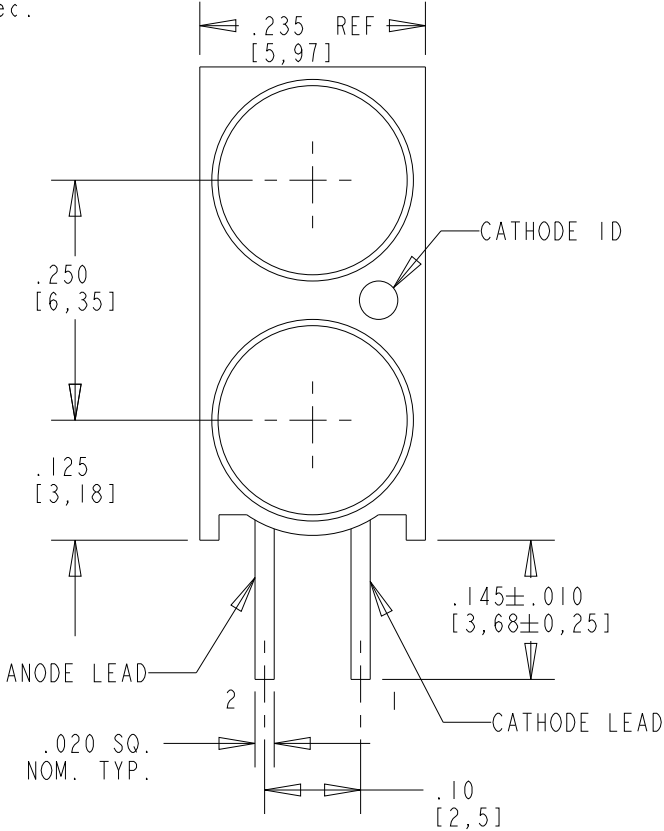
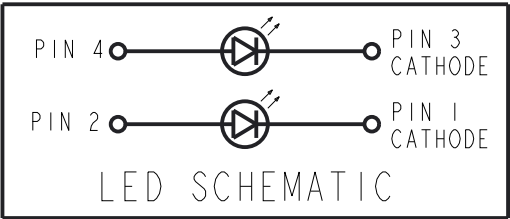
DIALIGHT PART NO.	POS.1	POS.2
552-0811F	RED DIFFUSED	RED DIFFUSED
552-0812F	RED DIFFUSED	GREEN DIFFUSED
552-0821F	GREEN DIFFUSED	RED DIFFUSED
552-0822F	GREEN DIFFUSED	GREEN DIFFUSED

RoHS Compliant 552-08XXF Bi-level CBI

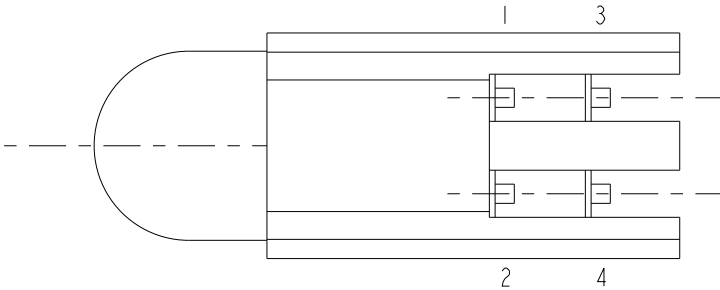
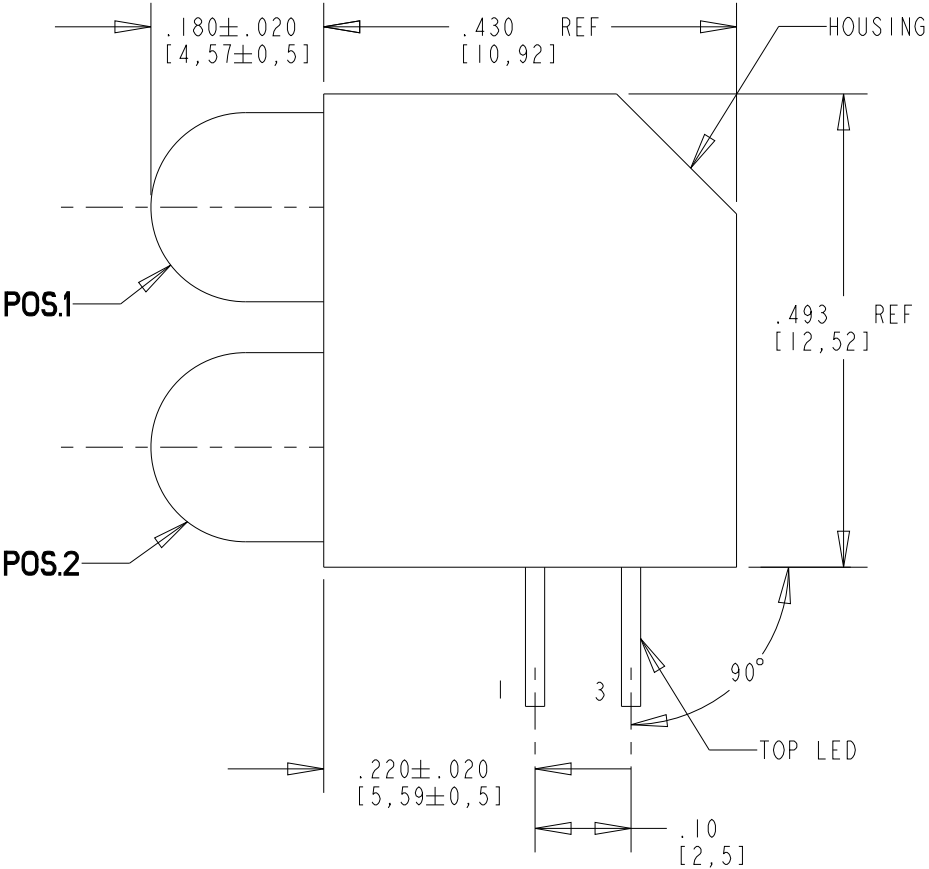
Part Numbers with the "F" suffix ending are RoHS Compliant.  
Example: 552-0811F  
Packaging is marked with "RoHS Compliant" label or equivalent markings.  
Parts can be wave soldered, dip soldered or hand soldered using typical  
lead-free soldering process with max 260°C temp. for 5 sec.

REV	ECN NO	REVISIONS	DRN	CKD	APP	DATE
A	91879	NEW RELEASE	LD		NO	4-20-22

POS.1  
POS.2



RECOMMENDED HOLE PATTERN



NOTES:

1. LEADS TO FIT INTO HOLES SPACED AS PER HOLE PATTERN.
2. LEAD DIMENSIONS SHOWN ARE MEASURED AT HOUSING EXIT.
3. DIALIGHT PART NUMBERS: 552-08XXF.
4. THIS ASSEMBLY CONTAINS ELECTROSTATIC DISCHARGE SENSITIVE DEVICES (ESDS). MAINTAIN ALL PRECAUTIONARY MEASURES DURING ASSEMBLY, HANDLING, AND STORAGE IN ACCORDANCE WITH IPC-A-610.
5. PIN NUMBERS FOR REFERENCE ONLY, DESIGNATION NON-EXISTENT ON PART.

ABSOLUTE MAXIMUM RATINGS AT 25°C AMBIENT	COLOR			UNITS
	RED	GREEN	YELLOW	
POWER DISSIPATION	81	52	60	mW
CONTINUOUS FORWARD CURRENT	30	25	20	mA
PEAK FORWARD CURRENT (DUTY CYCLE 1/10, PULSE WIDTH 10ms)	90	60	60	mA
DERATE LINEARLY FROM 50°C	.71	.27	.3	mA/°C
SOLDERING TEMPERATURE (.063 IN FROM BODY FOR 5 SEC)	260			°C
OPERATING TEMPERATURE	-40 TO +85			°C
STORAGE TEMPERATURE	-40 TO +100			°C

LENS COLOR	PEAK EMISSION WAVELENGTH (nm)	DOMINANT WAVELENGTH (nm)	VIEW ANGLE (°) 2θ 1/2	LUMINOUS INTENSITY (mcd) IF = 10 mA 25°C			FORWARD VOLTAGE (V) IF = 20 mA 25°C		REVERSE CURRENT (uA); 25°C; VR=5V
				MIN	TYP	MAX	TYP	MAX	MAX
RED DIFFUSED	635	623	50	19	40	90	2.0	2.6	100
GREEN DIFFUSED	563	571	50	19	40	40	2.1	2.6	
YELLOW DIFFUSED	583	590	50	19	40	90	2.1	2.6	



ATTENTION:  
OBSERVE PRECAUTIONS FOR  
HANDLING ELECTROSTATIC  
SENSITIVE DEVICES

THIS DRAWING AND THE CONTENTS HEREIN ARE CONFIDENTIAL AND THE SOLE  
PROPERTY OF DIALIGHT CORP. REPRODUCTION OF THIS DRAWING OR  
CONSTRUCTION OF ANY PARTS WITHIN THIS DRAWING ARE FORBIDDEN WITHOUT  
THE WRITTEN CONSENT OF DIALIGHT CORP.

SCALE: DRAWING SCALE		DRAWING NUMBER		REV	
ALL DIM'S: INCH (mm)		C-18555		A	
TOLERANCES: UNLESS OTHERWISE SPECIFIED		TITLE 5mm CBI BI-LEVEL RoHS COMPLIANT			
FRACTIONS: ±1/64 DECIMALS (.XX): ±.01 DECIMALS (.XXX): ±.005 DECIMALS (.XXXX): ±.0005 ANGLES: ±1°					
FINISH		MATERIAL			
FSCM 83330		Dialight			
SHEET 1 OF 1		FAMILY TABLE:			
		1501 ROUTE 34 SOUTH FARMINGDALE, NJ 07727 (732) 919-3119 www.dialight.com			