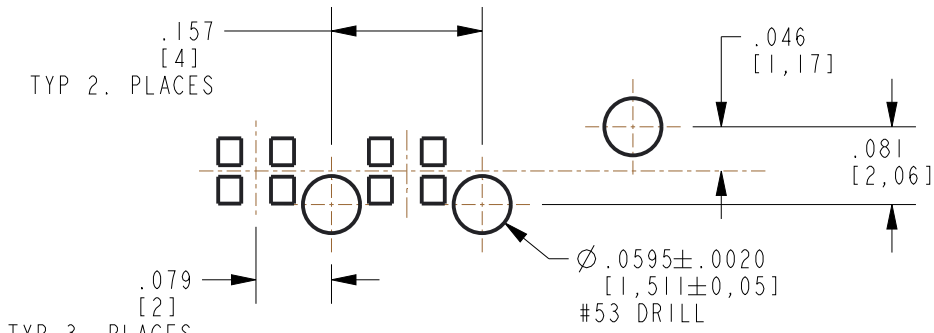
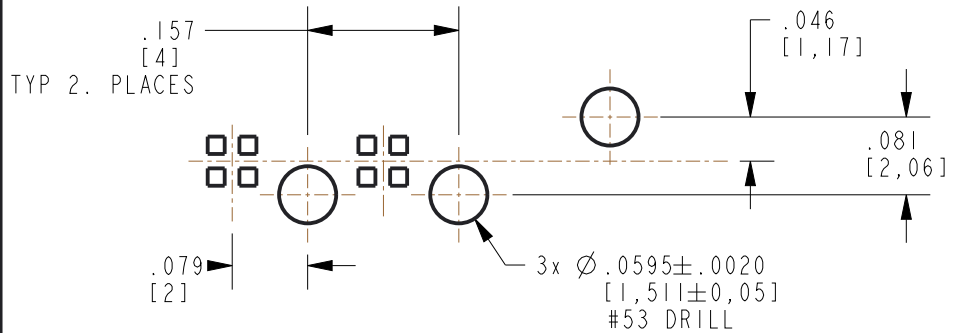
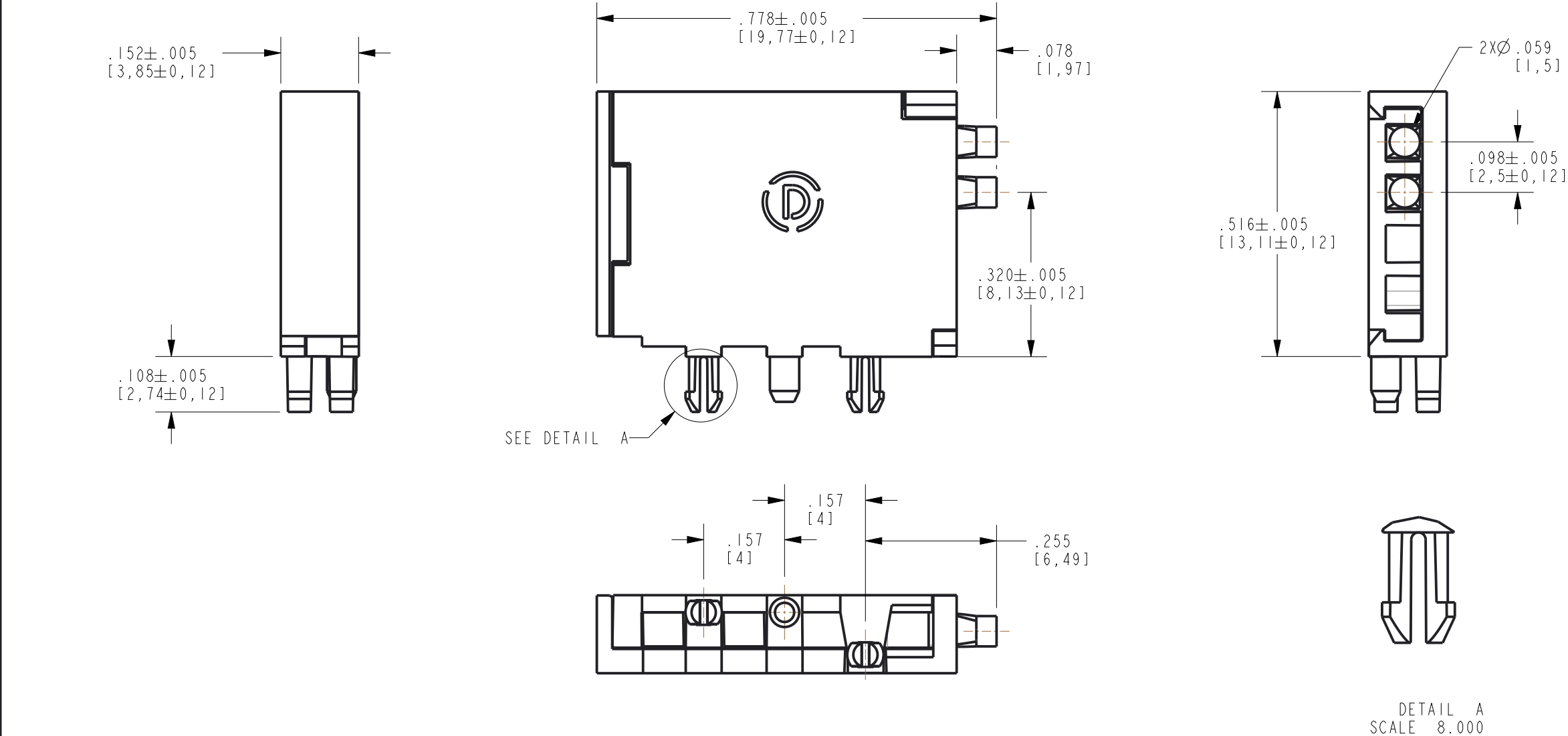


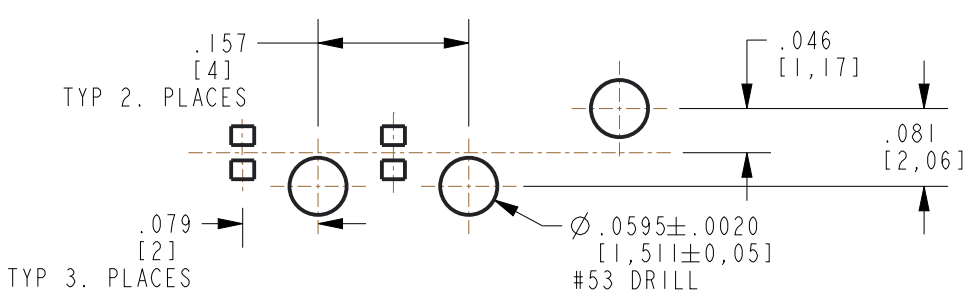
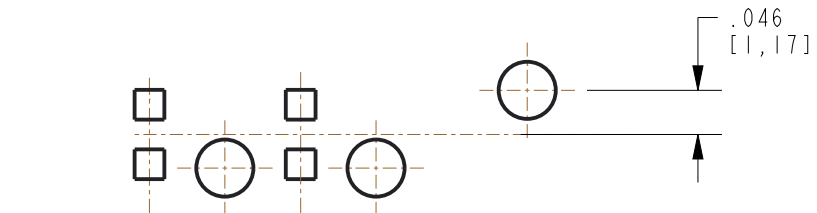
RoHS COMPLIANT 515-1236F LIGHT PIPE ASSEMBLY  
Part Numbers with the "F" suffix ending are RoHS Compliant. Packaging is marked with "RoHS Compliant" label or equivalent markings.

REV	ECN NO	REVISIONS	DRN	CKD	APP	DATE
A	—	NEW RELEASE	LD	—		
B	122326	UPDATED ROHS COMPLIANT NOTE	LD	CS		9-16-24



RECOMMENDED PAD LAYOUT FOR 0404 BI-COLOR/TRI-COLOR PKG (597-7717-502F)

RECOMMENDED PAD LAYOUT FOR 0603 BI-COLOR PKG (597-7726-607F) R/G.



RECOMMENDED PAD LAYOUT FOR 0603 SINGLE COLOR PKG (598-80X0-107F)

RECOMMENDED PAD LAYOUT FOR 0402 SINGLE COLOR PKG (597-3XX7-50XF)

DIRECTION OF LIGHT

DIRECTION OF LIGHT

NOTES:

1. LIGHTPIPE MATERIAL TO BE CLEAR POLYCARBONATE OR EQUIVALENT. AS SPECIFIED BY DIALIGHT ENGINEERING DEPT.
2. HOUSING AND COVER TO BE BLACK POLYCARBONATE OR EQUIVALENT. AS SPECIFIED BY DIALIGHT ENGINEERING DEPT.
3. DIALIGHT P/N 515-1236F
4. MAXIMUM LED THICKNESS FOR THIS LP ASSEMBLY IS .040" (1mm). SM PACKAGES 0402, 0404, 0603, SINGLE COLOR AND BI-COLOR OR SMALLER PACKAGES ARE RECOMMENDED.

THIS DRAWING AND THE CONTENTS HEREIN ARE CONFIDENTIAL AND THE SOLE PROPERTY OF DIALIGHT. REPRODUCTION OF THIS DRAWING OR CONSTRUCTION OF ANY PARTS WITHIN THIS DRAWING ARE FORBIDDEN WITHOUT THE WRITTEN CONSENT OF DIALIGHT.		
SCALE: 4.000	DRAWING NUMBER	REV
ALL DIM'S IN: INCHES (MM)	C-18385	B
TOLERANCES: UNLESS OTHERWISE SPECIFIED	TITLE	
FRACTIONS: $\pm 1/64$	LENS 1 HIGH FROM THE TOP	
DECIMALS (.XX): $\pm .01$	MATERIAL	
DECIMALS (.XXX): $\pm .003$		
DECIMALS (.XXXX): $\pm .0005$		
ANGLES: $\pm 1^\circ$		
FINISH:		
FSCM	83330	
SHEET 1 OF 1		FAMILY TABLE: