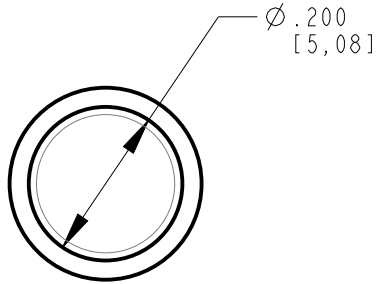
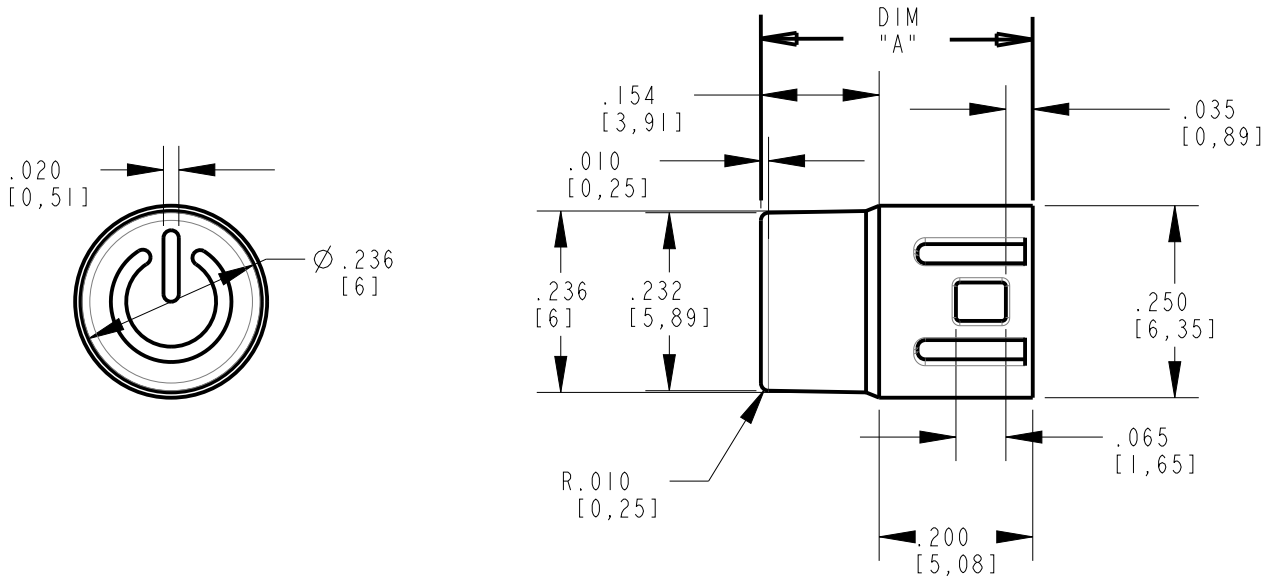
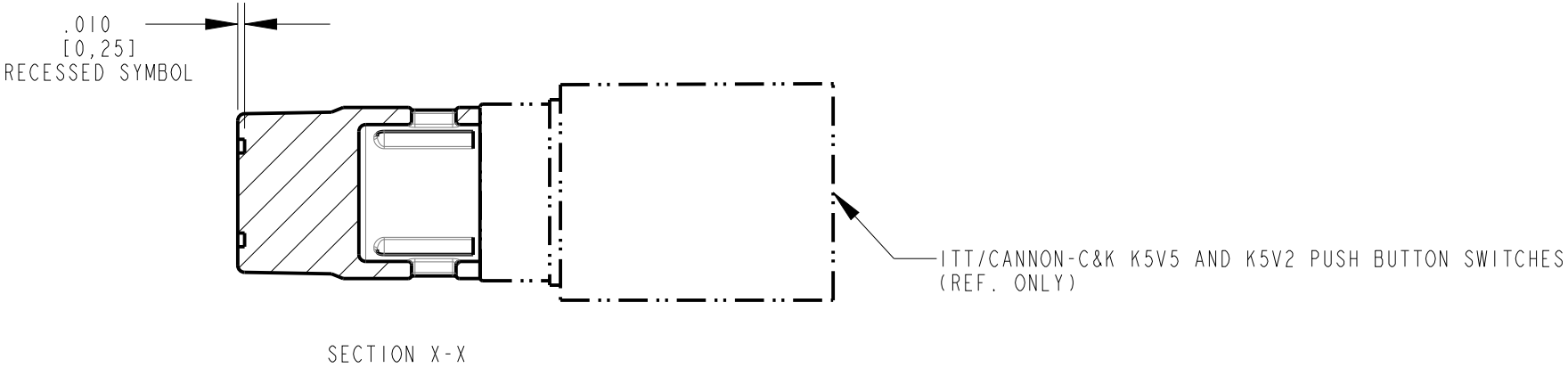


DIALIGHT P/N	DIM "A"
515-1140-801F	.354 [9.0]

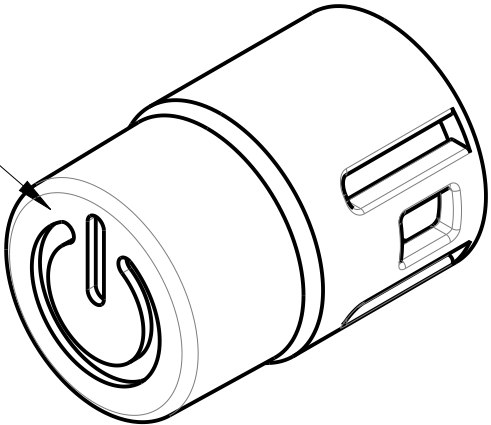
REV	ECN NO	REVISIONS	DRN	CKD	APP	DATE
A	—	NEW-RELEASE	VP	JTD	NO	9-10-15

RoHS Compliant 515-1140-801F

Part Numbers with the "F" suffix ending are RoHS Compliant.
Packaging is marked with "RoHS Compliant" label or equivalent markings.




CHARMILLE 16-18
OR EQUIVALENT
FINISH



SCALE: 6.0

- NOTES:
1. ACTUATOR SNAPS ONTO A K5V2 AND K5V5 ITT/CANNON RIGHT ANGLE PUSH-BUTTON SWITCH.
 2. MATERIAL: ALLOY GREY OPAQUE 94-V0 POLYCARBONATE (GE P/N 920GY7C073).
 3. EXTERIOR SURFACES: SMOOTH PER SPI-A2 UNLESS OTHERWISE SPECIFIED
 4. IDENTIFICATION FOR PARTS DEEMED TO LOW FOR MARKING TO BE BAGGED AND LABELED WITH THE FOLLOWING INFO:
P/N 515-1140-801F
REVISION LEVEL: AS REQUIRED QUANTITY PER BAG: 100
MOLDING DATE CODE: XX XX
YR DAY
MANUFACTURER: DIALIGHT, COUNTRY OF ORIGIN: USA
RoHS COMPLIANT OR EQUIVALENT MARKING

THIS DRAWING AND THE CONTENTS HEREIN ARE CONFIDENTIAL AND THE SOLE PROPERTY OF DIALIGHT. REPRODUCTION OF THIS DRAWING OR CONSTRUCTION OF ANY PARTS WITHIN THIS DRAWING ARE FORBIDDEN WITHOUT THE WRITTEN CONSENT OF DIALIGHT.		
SCALE: 4.0	DRAWING NUMBER C-18155	REV A
ALL DIM'S IN: INCHES (MM)		
TOLERANCES: UNLESS OTHERWISE SPECIFIED	TITLE ACTUATOR, LIGHTPIPE 9mm RoHS COMPLIANT	
FRACTIONS: ±1/64 DECIMALS (.XX): ±.01 DECIMALS (.XXX): ±.005 DECIMALS (.XXXX): ±.0005 ANGLES: ±1°		
FINISH: -	MATERIAL -	
FSCM 83330		1501 ROUTE 34 SOUTH FARMINGDALE, NJ 07727