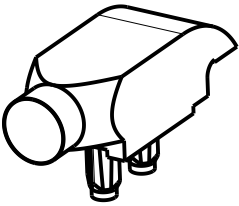
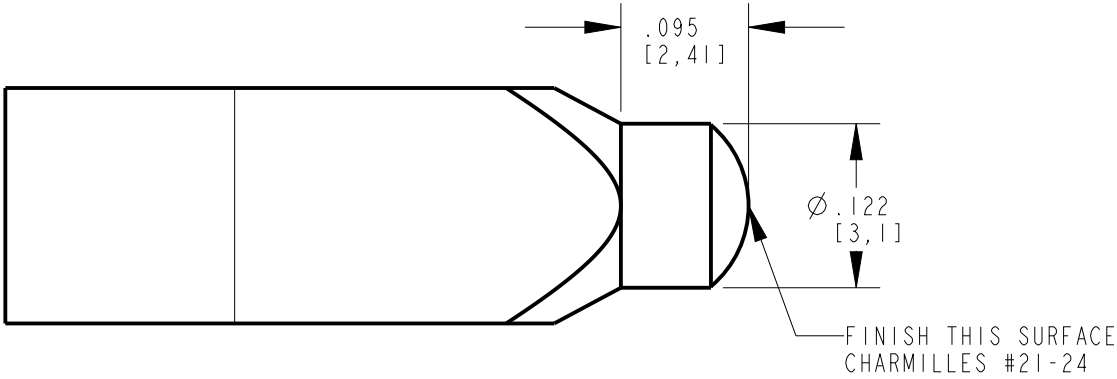


RoHS COMPLIANT 515-1203F

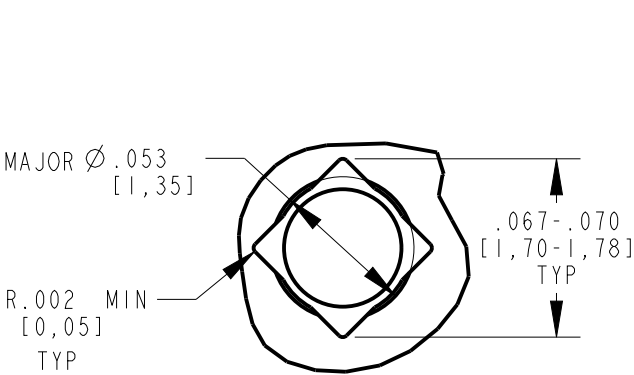
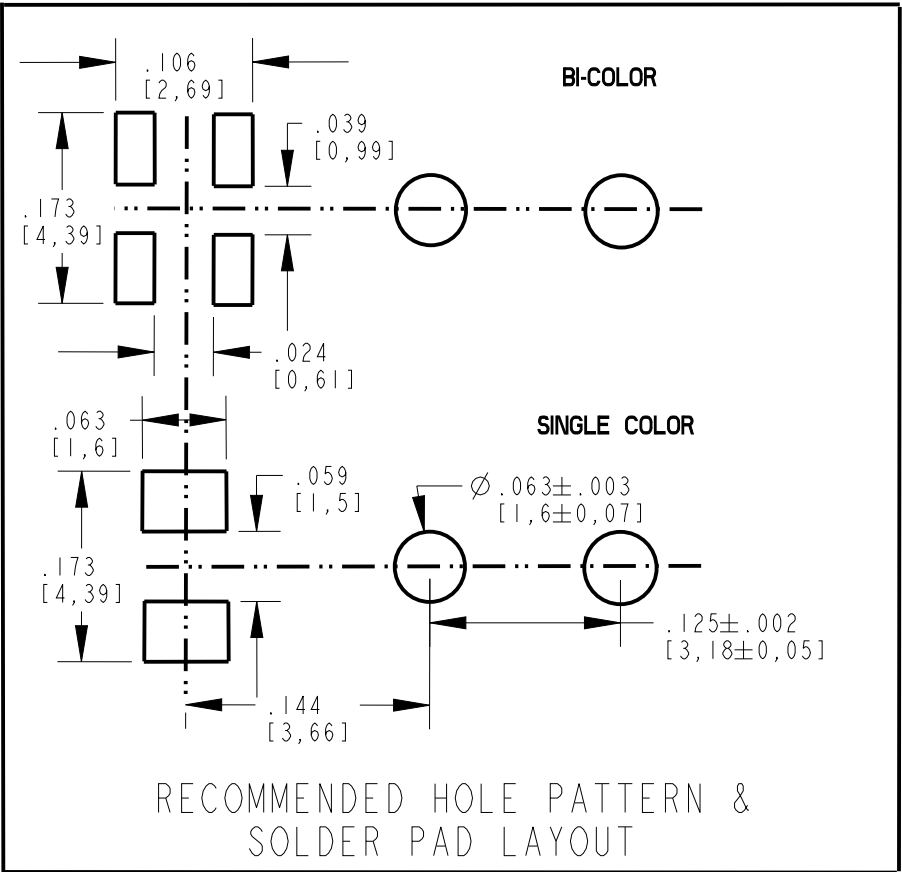
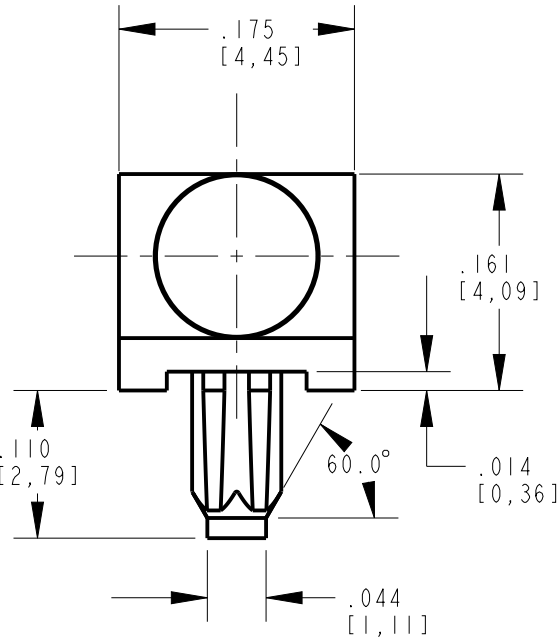
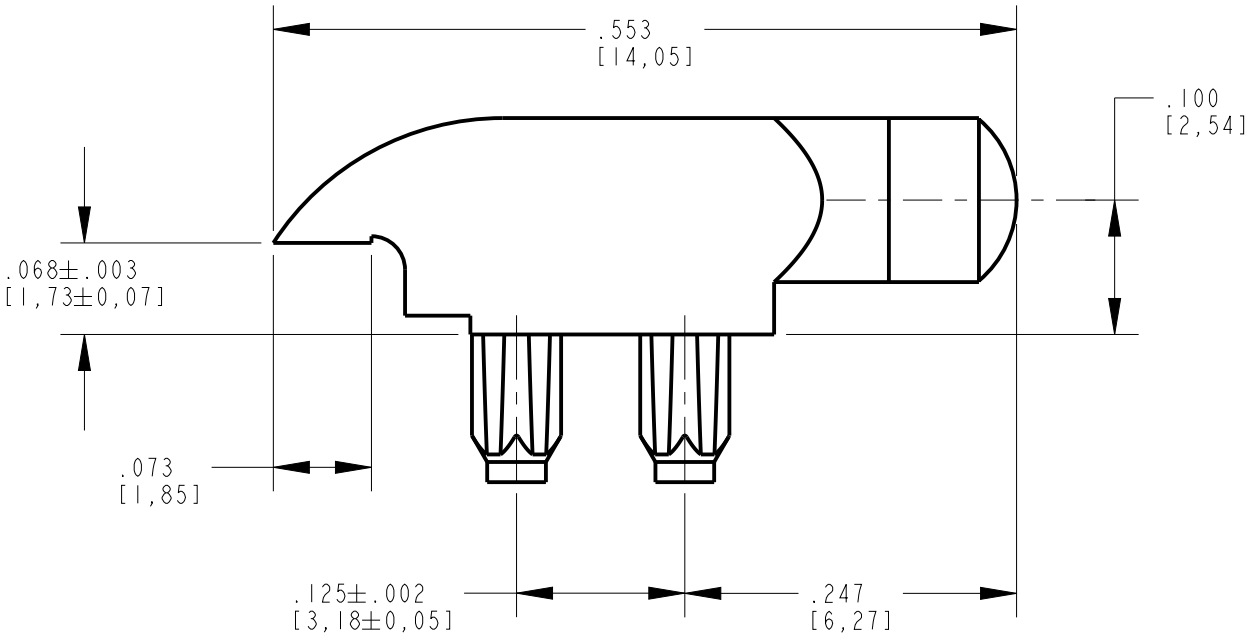
Part Numbers with the "F" suffix ending are RoHS Compliant.
Packaging is marked with "RoHS Compliant" label or equivalent markings.

REV	ECN NO	REVISIONS	DRN	CKD	APP	DATE
A		NEW RELEASE	RSK	WFB	NO	12/15/14

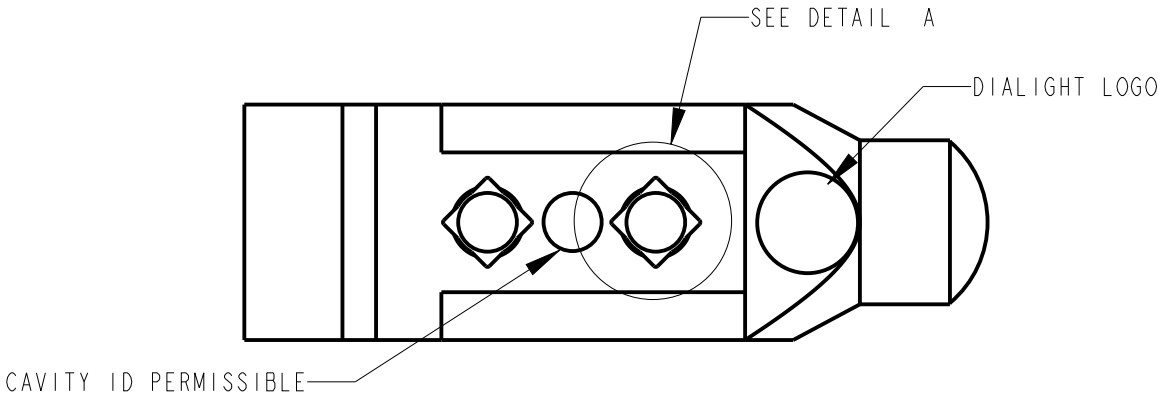



SCALE 3.000

- NOTES:
1. DIALIGHT PART NUMBER 515-1203F
 2. UNLESS OTHERWISE SPECIFIED, ALL SURFACES MUST HAVE FINISH OF SPI A3 TO B1.
 3. MATERIAL TO BE CLEAR, TRANSMISSABLE POLYCARBONATE (UL 94V-0 FLAMABILITY).
 4. FLASH NOT TO EXCEED .005, SINK MARKS PERMISSIBLE $\pm .005$.
 5. UNLESS OTHERWISE SPECIFIED, .003" ROUNDS AND FILLETS PERMISSIBLE.
 6. GATE VESTIGE TO BE .010" ABOVE OR BELOW SURFACE.
 7. COMPONENTS DESIGNED TO BE PRESSED INTO PC BOARD.
 8. UNLESS OTHERWISE SPECIFIED, 2 DEGREE DRAFT PERMISSIBLE.
 9. DRAWING REVISION DOES NOT REFLECT MARKING ON PACKAGING.
 10. RECOMMENDED LIGHT SOURCE: DIALIGHT P/N 597-3XX2-50XF, 597-77X1-50XF, OR EQUIVALENT 1208 OR 1210 PACKAGE.



DETAIL A
SCALE 14.000



THIS DRAWING AND THE CONTENTS HEREIN ARE CONFIDENTIAL AND THE SOLE PROPERTY OF DIALIGHT. REPRODUCTION OF THIS DRAWING OR CONSTRUCTION OF ANY PARTS WITHIN THIS DRAWING ARE FORBIDDEN WITHOUT THE WRITTEN CONSENT OF DIALIGHT.		
SCALE: 7.000	DRAWING NUMBER C-18021	REV A
ALL DIM'S IN: INCHES (MM)		
TOLERANCES: UNLESS OTHERWISE SPECIFIED	TITLE SINGLE LEVEL LIGHT PIPE Ø.122 X .553 LG	
FRACTIONS: ±1/64 DECIMALS (.XX): ±.010 DECIMALS (.XXX): ±.005		
ANGLES: ±1°	MATERIAL SEE BOM	
FINISH:	 1501 ROUTE 34 SOUTH FARMINGDALE, NJ 07727	
FSCM 83330		
SHEET 1 OF 1 FAMILY TABLE:		