

DIALIGHT PART NUMBER	LED COLOR
521-9651F	RED/GREEN BI-COLOR
521-9724F	YELLOW/GREEN BI-COLOR

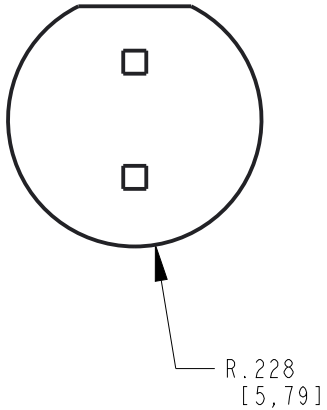
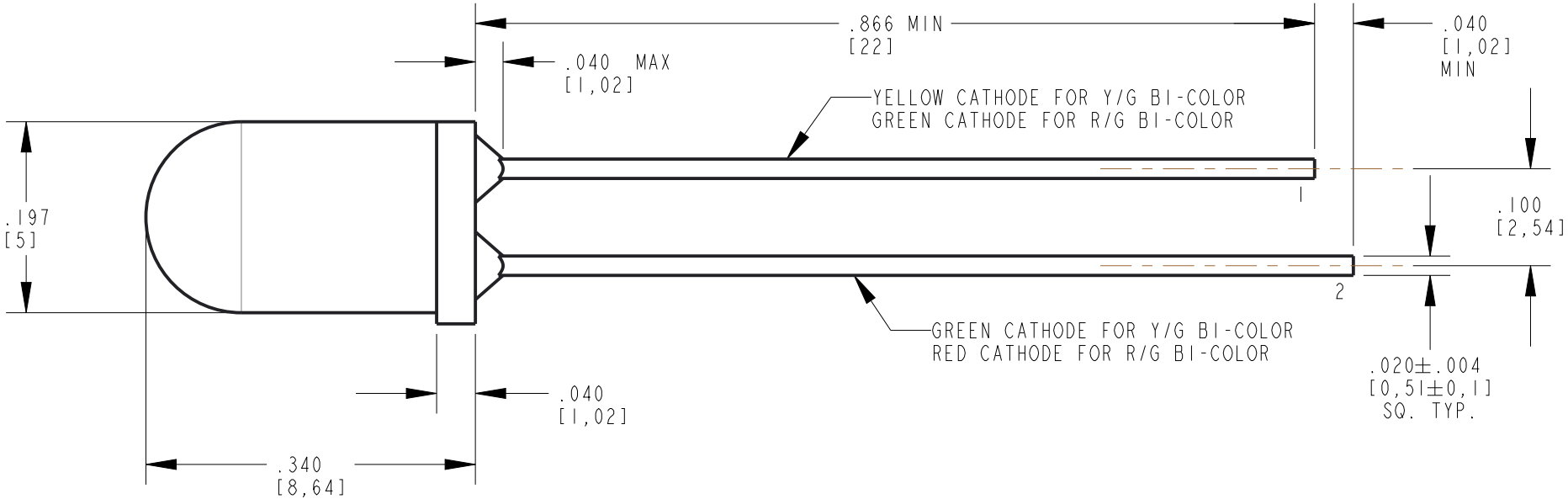
RoHS COMPLIANT 521-9651F & 521-9724F

Part Numbers with the "F" suffix ending are RoHS Compliant. Packaging is marked with "RoHS Compliant" label or equivalent markings. Parts can be wave soldered, dip soldered or hand soldered using typical lead-free soldering process with max 260°C temp. for 5 sec.



ATTENTION:
OBSERVE PRECAUTIONS FOR
HANDLING ELECTROSTATIC
SENSITIVE DEVICES

REV	ECN NO	REVISIONS	DRN	CKD	APP	DATE
A	—	NEW RELEASE	KLJ	NO		1-5-09
B	—	REVISED NOTE 1 UPDATED SPECS FOR Y/G LED	VP	NO	SK	5-6-15
C	102782	UPDATED LED SPECS	LD	CS		3-2-23

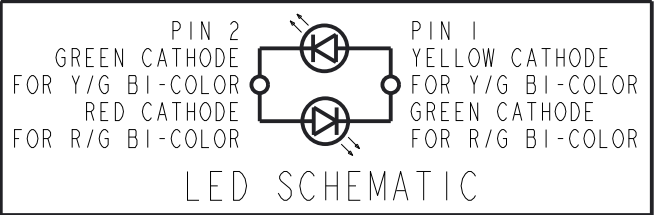



NOTES:

- DIE: AlInGaP (YELLOW/GREEN)
AlGaAs/GaP (RED/GREEN)
- LENS COLOR: WHITE DIFFUSED
- LEAD SPACING MEASURED NEAR EPOXY PACKAGE.
- TERMINATION FINISH: 60-100 μ in SILVER (Ag) OVER 30-50 μ in COPPER (Cu) OVER 10-30 μ in NICKEL (Ni) OVER 30 μ in COPPER (Cu) ON MILD STEEL BASE METAL.
- PIN NUMBERS FOR REFERENCE ONLY, DESIGNATION NON-EXISTENT ON PART.
- DIALIGHT PART NUMBERS: 521-9651F; 521-9724F
- PACKAGING: BULK
- LABELING: BAGS TO BE IDENTIFIED WITH DIALIGHT P/N, QTY, DATE CODE, AND INTENSITY AND COLOR BIN CATEGORIES.
- THIS ASSEMBLY CONTAINS ELECTROSTATIC DISCHARGE SENSITIVE DEVICES (ESDS). MAINTAIN ALL PRECAUTIONARY MEASURES DURING ASSEMBLY, HANDLING, AND STORAGE IN ACCORDANCE WITH IPC-A-610.

OPERATING CHARACTERISTICS AT 25°C AMBIENT												
BI-COLOR LED	COLOR	DOMINANT WAVELENGTH (nm)			LUMINOUS INTENSITY @I _F = 20 mA (mcd)			FORWARD VOLTAGE @I _F = 20 mA (V)		REVERSE CURRENT (μ A)	PEAK WAVELENGTH (nm)	VIEWING ANGLE (DEG)
		MIN	TYP	MAX	MIN	TYP	MAX	TYP	MAX			
YELLOW/GREEN	YELLOW	585	589	592	11	30	—	2.1	2.6	100	591	50
	GREEN	567	571	574	18	50	—				573	
RED/GREEN	RED	—	638	—	23	—	110	2.0	2.6	100	660	60
	GREEN	—	569	—	23	—	110				570	

ABSOLUTE MAXIMUM RATINGS AT 25°C AMBIENT	UNITS	Y/G BI-COLOR		R/G BI-COLOR	
		YELLOW	GREEN	RED	GREEN
POWER DISSIPATION	mW	52	52	81	81
FORWARD DC CURRENT	mA	20	20	30	30
DERATING LINEAR FROM 50°C	mA/°C	0.40	0.40	0.45	
SOLDERING TEMPERATURE, 5 SEC., 1/16" FROM BODY	°C	260			
OPERATING TEMPERATURE	°C	-40 to +100		-40 TO +85	
STORAGE TEMPERATURE	°C			-40 TO +100	



THIS DRAWING AND THE CONTENTS HEREIN ARE CONFIDENTIAL AND THE SOLE PROPERTY OF DIALIGHT CORP. REPRODUCTION OF THIS DRAWING OR CONSTRUCTION OF ANY PARTS WITHIN THIS DRAWING ARE FORBIDDEN WITHOUT THE WRITTEN CONSENT OF DIALIGHT CORP.		
SCALE: 4.000	DRAWING NUMBER C-17695	REV C
ALL DIM's: INCH (mm)		
TOLERANCES: UNLESS OTHERWISE SPECIFIED		
FRACTIONS: $\pm 1/64$ DECIMALS (.XX): $\pm .02$ DECIMALS (.XXX): $\pm .010$		
ANGLES: $\pm 3^\circ$		
FINISH	TITLE $\varnothing 5\text{mm}$ BI-COLOR LED RoHS COMPLIANT	
	MATERIAL	
FSCM 83330	 1501 ROUTE 34 SOUTH FARMINGDALE, NJ 07727 (732) 919-3119 www.dialight.com	
	SHEET 1 OF 1	FAMILY TABLE: