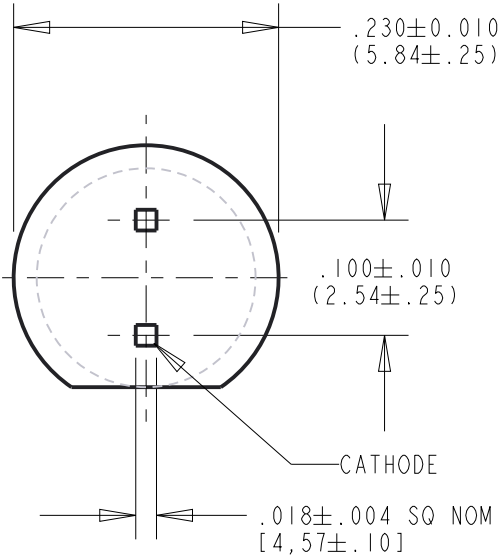


LED COLOR = GREEN DIFFUSED					
LED CHARACTERISTICS	MIN.	TYP.	MAX.	UNITS	TEST CONDITIONS
LUMINOUS INTENSITY	19.1		30.7	mcd	I _F = 10mA
FORWARD VOLTAGE		2.0	2.7	V	I _F = 10mA
REVERSE VOLTAGE	5.0			V	I _R = 100μA
PEAK WAVELENGTH		570		nm	
DOMINANT WAVELENGTH		569		nm	
VIEWING ANGLE (2 q 1/2)		60		DEG.	I _F = 10mA
SPEED OF RESPONSE		500		nm	

REV	ECN NO	REVISIONS	DRN	CKD	APP	DATE
A	—	NEW RELEASE	SM		NO	7-30-07
B	129474	UPDATED LED SPECS	LD		NO	4-11-25

NOTES:

1. LEAD SPACING MEASURED NEAR EPOXY PACKAGE.
2. LEAD FINISH: TIN (Sn) SILVER (Ag), COPPER (Cu)
IN THICKNESS OF 50/100 MICRONS,
BASE METAL: MILD STEEL.
3. DIALIGHT PART NO. 521-9250F.



RoHS Compliant 521-9250F Thru hole Single Color LED

Part Numbers with the "F" suffix ending are RoHS Compliant.
Example: 521-9250F
The bag packaging is marked with "RoHS Compliant" label or equivalent markings.
Parts can be wave soldered, dip soldered or hand soldered using typical lead-free soldering process with max 260°C temp. for 5 sec.

ABSOLUTE MAXIMUM RATINGS	GREEN DIFF.	UNITS
POWER DISSIPATION	135	mW
DERATE LINEARLY FROM 50°C	0.5	mA/°C
CONTINOUS FORWARD CURRENT	25	mA
PEAK FORWARD CURRENT	90	mA
TRANSIENT FORWARD CURRENT (10μs PULSE)	500	mA
LEAD SOLDERING TEMPERATURE FOR 5 SEC.	260	°C
OPERATING TEMPERATURE	-20 TO +100	°C
STORAGE TEMPERATURE	-40 TO +100	°C

THIS DRAWING AND THE CONTENTS HEREIN ARE CONFIDENTIAL AND THE SOLE PROPERTY OF DIALIGHT CORP. REPRODUCTION OF THIS DRAWING OR CONSTRUCTION OF ANY PARTS WITHIN THIS DRAWING ARE FORBIDDEN WITHOUT THE WRITTEN CONSENT OF DIALIGHT CORP.		
SCALE: 6.000	DRAWING NUMBER	REV
ALL DIM's: INCH (mm)	C-17472	B
TOLERANCES: UNLESS OTHERWISE SPECIFIED	TITLE	
FRACTIONS: ±1/64	5 mm LED GREEN DIFFUSED	
DECIMALS (.XX): ±.01	RoHS COMPLIANT	
DECIMALS (.XXX): ±.005	MATERIAL	
DECIMALS (.XXXX): ±.0005		
ANGLES: ±1°		
FINISH		
FSCM 83330	SHEET 1 OF 1	FAMILY TABLE: