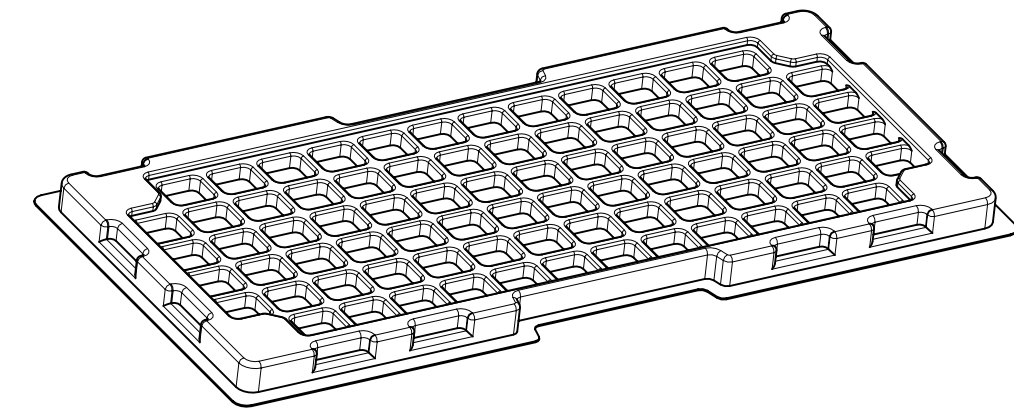
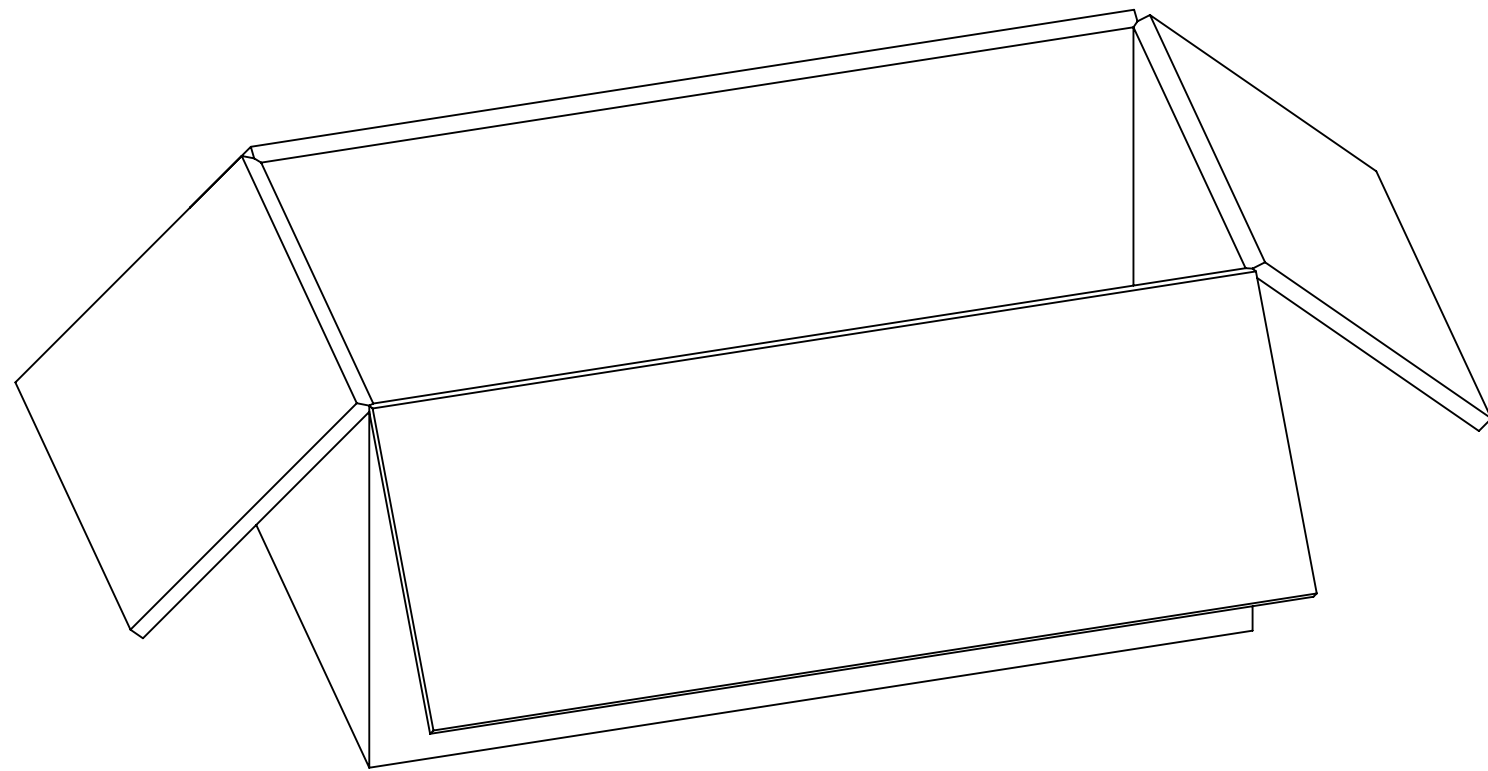


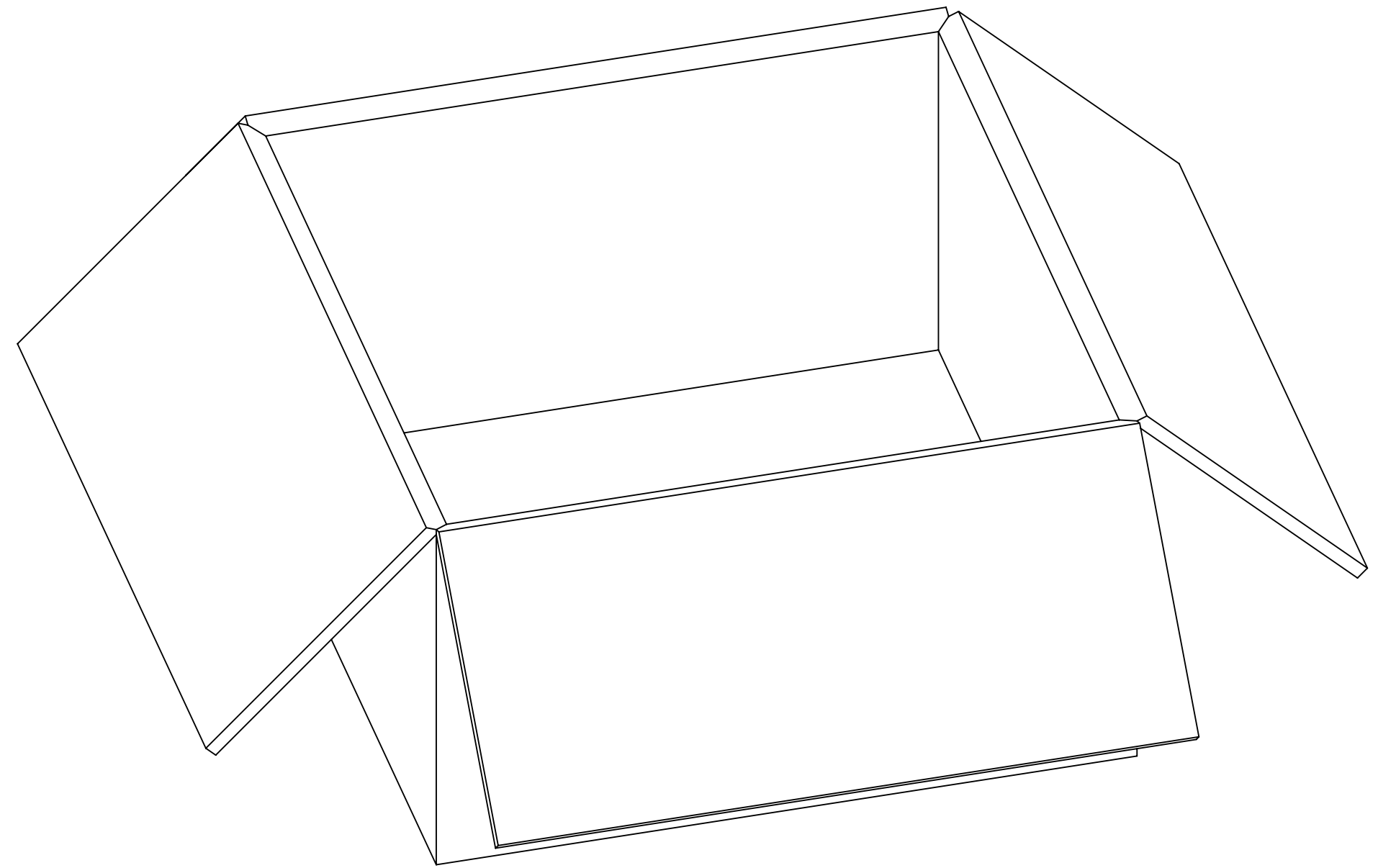
PRODUCT  
PN-XXXXX-XXXX



80 SETS PER TRAY  
P/N: 89707-0190



1600 SETS PER INNER  
CARTON BOX  
P/N: 96707-0001



3200 SETS PER OUTER  
CARTON BOX  
P/N: 96708-0005

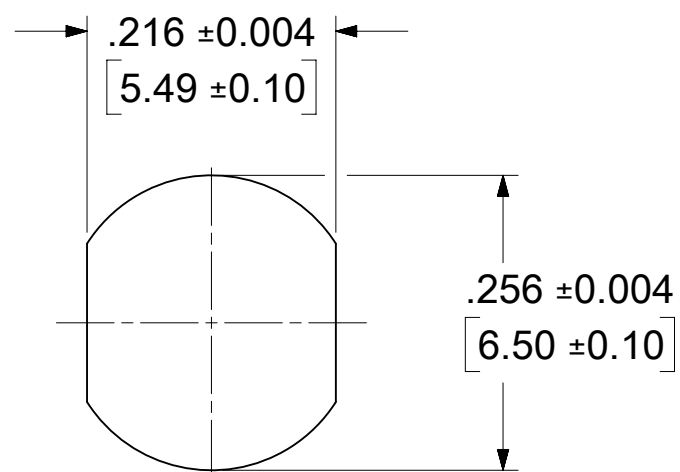
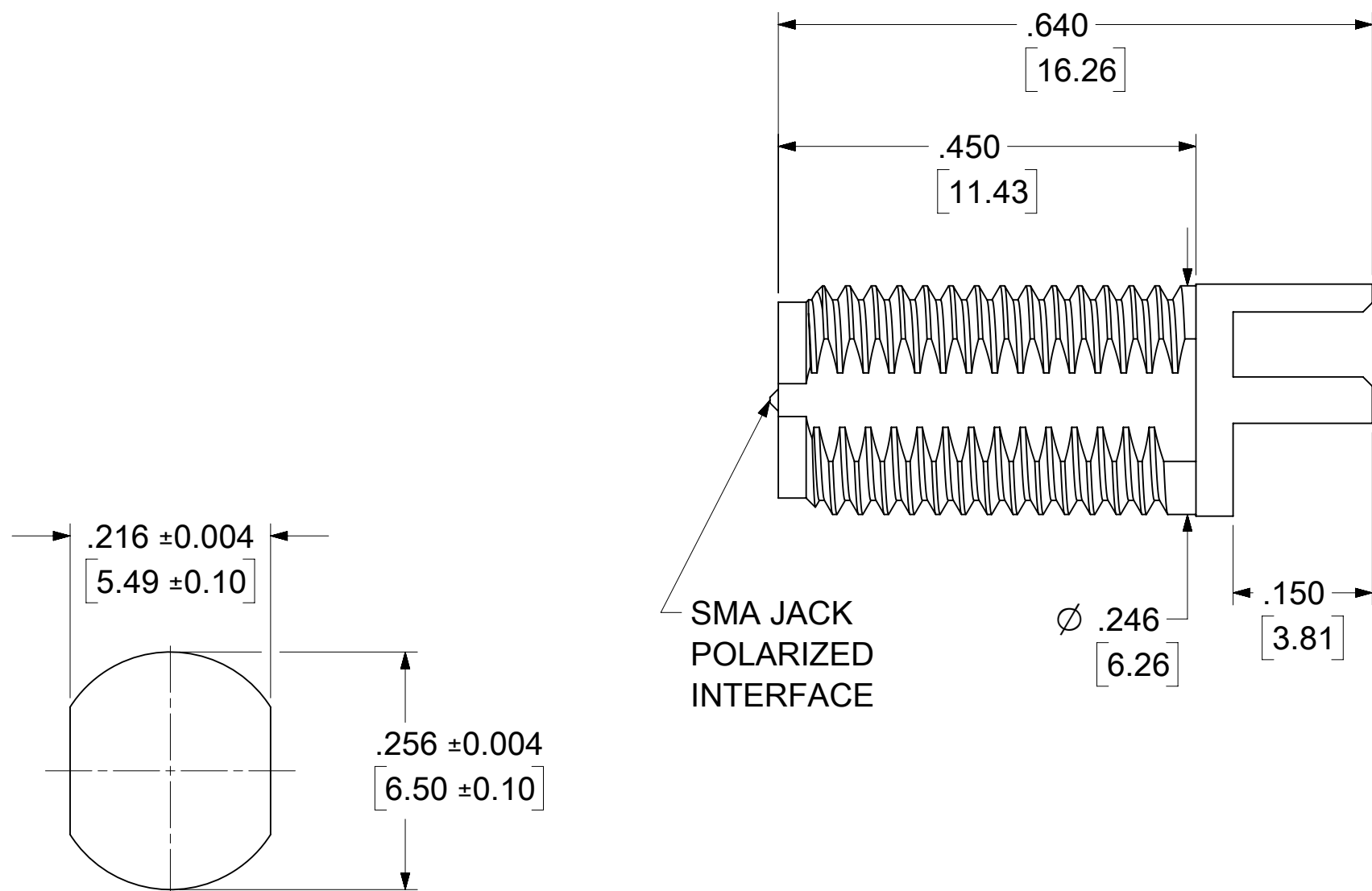
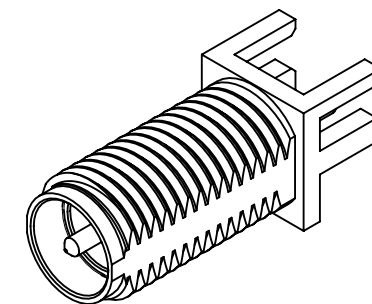
<b>FUNCTIONAL SYMBOLS</b> $\nabla_A = 0$ $\nabla_C = 0$ $\nabla_P = 0$ <b>DIVISIONAL SYMBOLS</b> 3 PLACES ± 2 PLACES ± 1 PLACE ± 0 PLACES ±	THIS DRAWING CONTAINS INFORMATION THAT IS PROPRIETARY TO MOLEX ELECTRONIC TECHNOLOGIES, LLC AND SHOULD NOT BE USED WITHOUT WRITTEN PERMISSION							
	DIMENSION UNITS <b>MM</b>	SCALE <b>NTS</b>	CURRENT REV DESC: PACKING PART					
	GENERAL TOLERANCES (UNLESS SPECIFIED)							
	ANGULAR TOL ± 0.5°							
	DRAFT WHERE APPLICABLE MUST REMAIN WITHIN DIMENSIONS							
STATUS: Design Approved DRWN: Jason YS Su CHK'D: Darry Cheng APPR: Darry Cheng		2024-01-15 2024-01-17 2024-01-17	<b>molex</b> PACKAGING SPECIFICATION (TRAY 0190) PRODUCT SALES DRAWING					
DRAFT WHERE APPLICABLE MUST REMAIN WITHIN DIMENSIONS		THIRD ANGLE PROJECTION 	DRAWING <b>C-SIZE</b>	SERIES <b>89542</b>	DOCUMENT NUMBER <b>895420040</b>	DOC TYPE <b>PSD</b>	DOC PART <b>000</b>	REVISION <b>A1</b>
		MATERIAL NUMBER -----	CUSTOMER	SHEET NUMBER <b>1 OF 1</b>				

MATERIALS AND FINISHES:

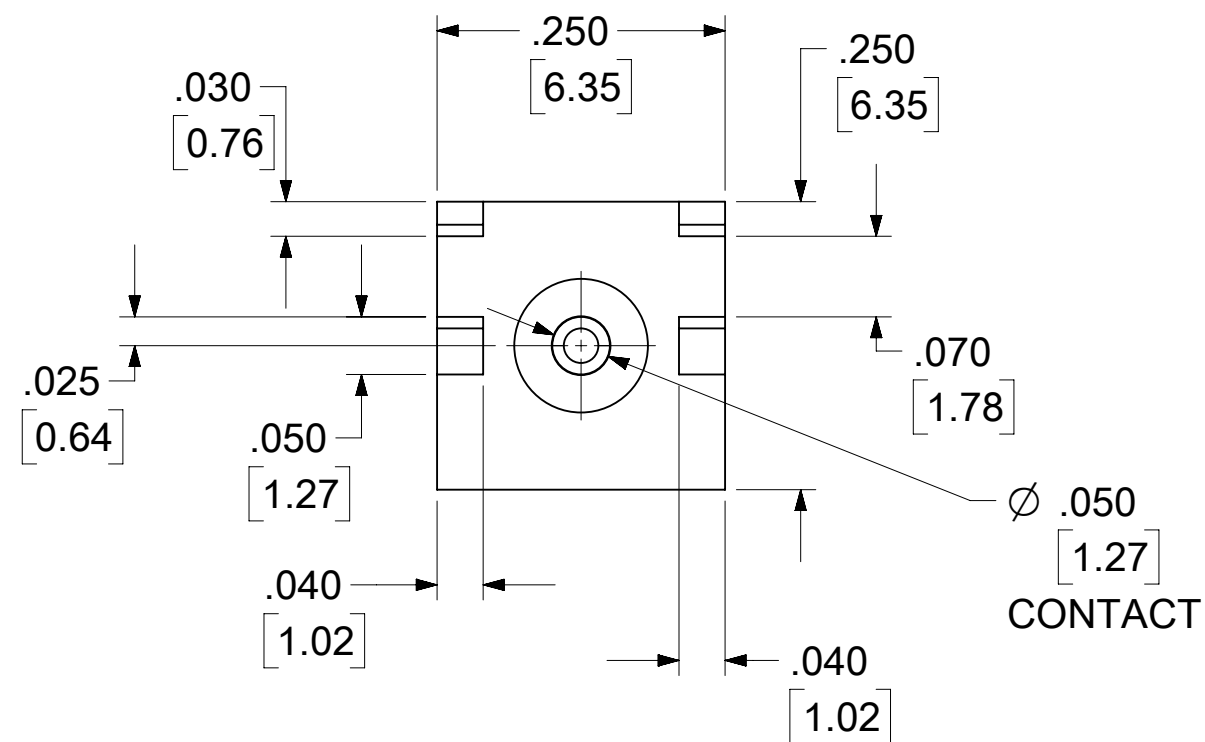
BODY: BRASS  
PLATED GOLD

CENTER CONTACT: BRASS  
PLATED GOLD

INSULATOR: TEFLON

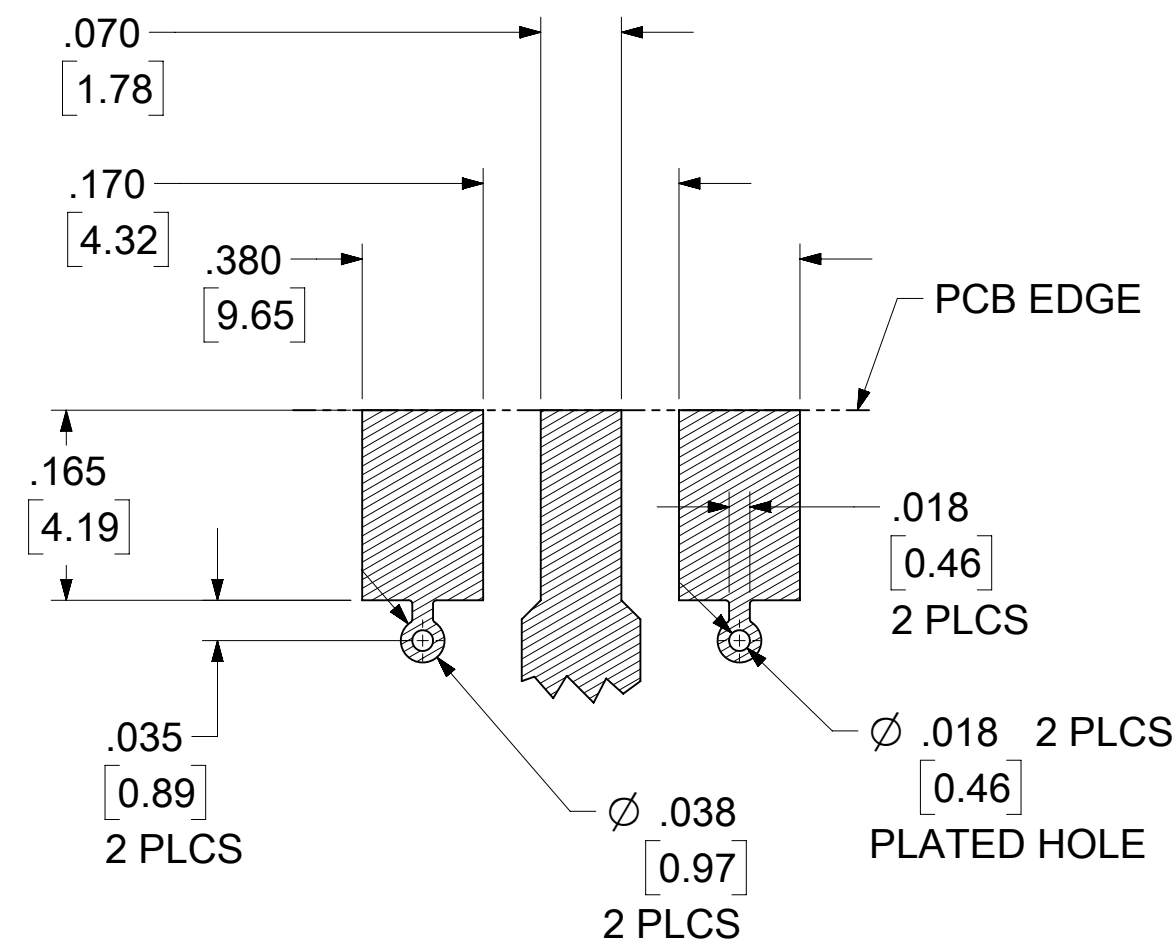


RECOMMENDED  
PANEL CUTOUT



RECOMMENDED PAD LAYOUT

BASE WIDTH: .250 (6.35) NOM.  
BOARD THICKNESS: .062 (1.57) NOM.  
BOARD MATERIAL: FR4 W/1.0 OZ  
COPPER BOTH SIDES



73251-3150	BY TRAY PER P/N 89542-0040
PART NO.	PACKAGING

SEE SHEET 2 FOR OTHER PART NUMBERS

FUNCTIONAL SYMBOLS	THIS DRAWING CONTAINS INFORMATION THAT IS PROPRIETARY TO MOLEX ELECTRONIC TECHNOLOGIES, LLC AND SHOULD NOT BE USED WITHOUT WRITTEN PERMISSION		CURRENT REV DESC:		<b>molex</b>
	DIMENSION UNITS	SCALE			
$\frac{F}{A} = 0$	IN/MM	NTS			SMA JACK POLARIZED EDGE MOUNT, .062 PCB, 50 OHM SMA-J/PCB, EWR-3281
$\frac{F}{C} = 0$	GENERAL TOLERANCES (UNLESS SPECIFIED)				
$\frac{F}{P} = 0$	ANGULAR TOL ± 2.0°				PRODUCT CUSTOMER DRAWING
DIVISIONAL SYMBOLS	4 PLACES	±			
	3 PLACES	±			DOCUMENT NUMBER
	2 PLACES	±			
	1 PLACE	±			SD-73251-315
	0 PLACES	±			
	DRAFT WHERE APPLICABLE MUST REMAIN WITHIN DIMENSIONS		THIRD ANGLE PROJECTION	DRAWING	SERIES
				C-SIZE	73251
					MATERIAL NUMBER
					SEE TABLE
					CUSTOMER
					GENERAL MARKET
					SHEET NUMBER
					1 OF 2

**MATERIALS AND FINISHES:**

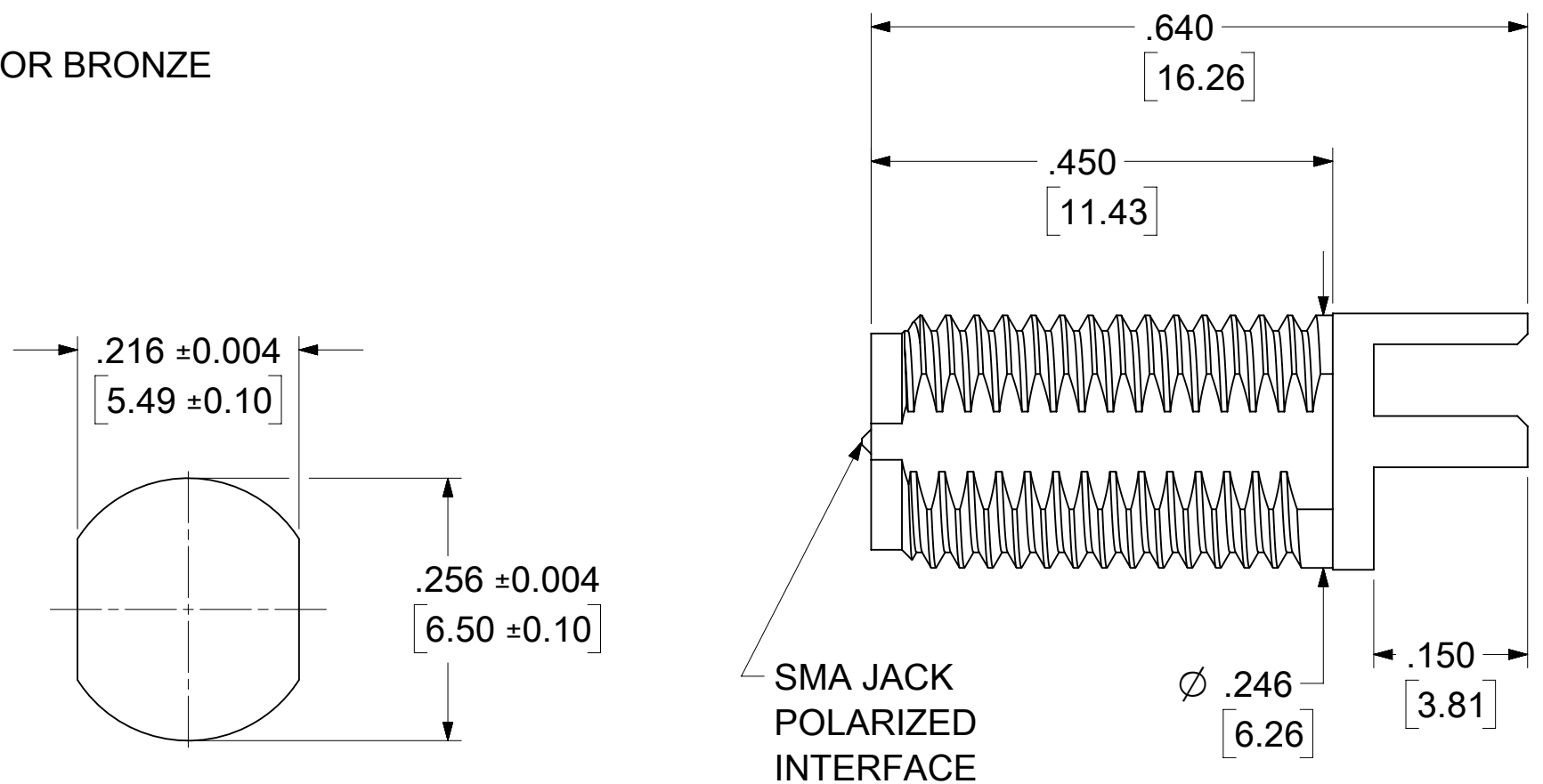
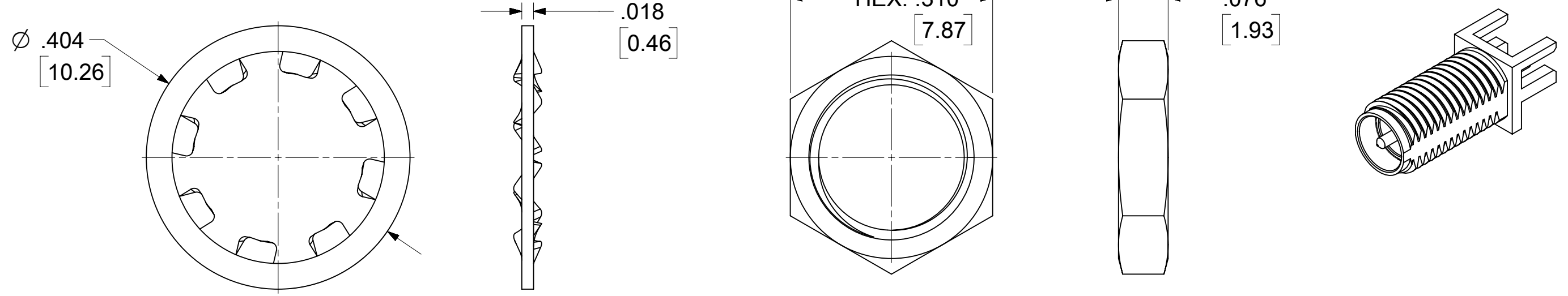
**BODY: BRASS  
PLATED GOLD**

**CENTER CONTACT: BRASS  
PLATED GOLD**

**INSULATOR: TEFLON**

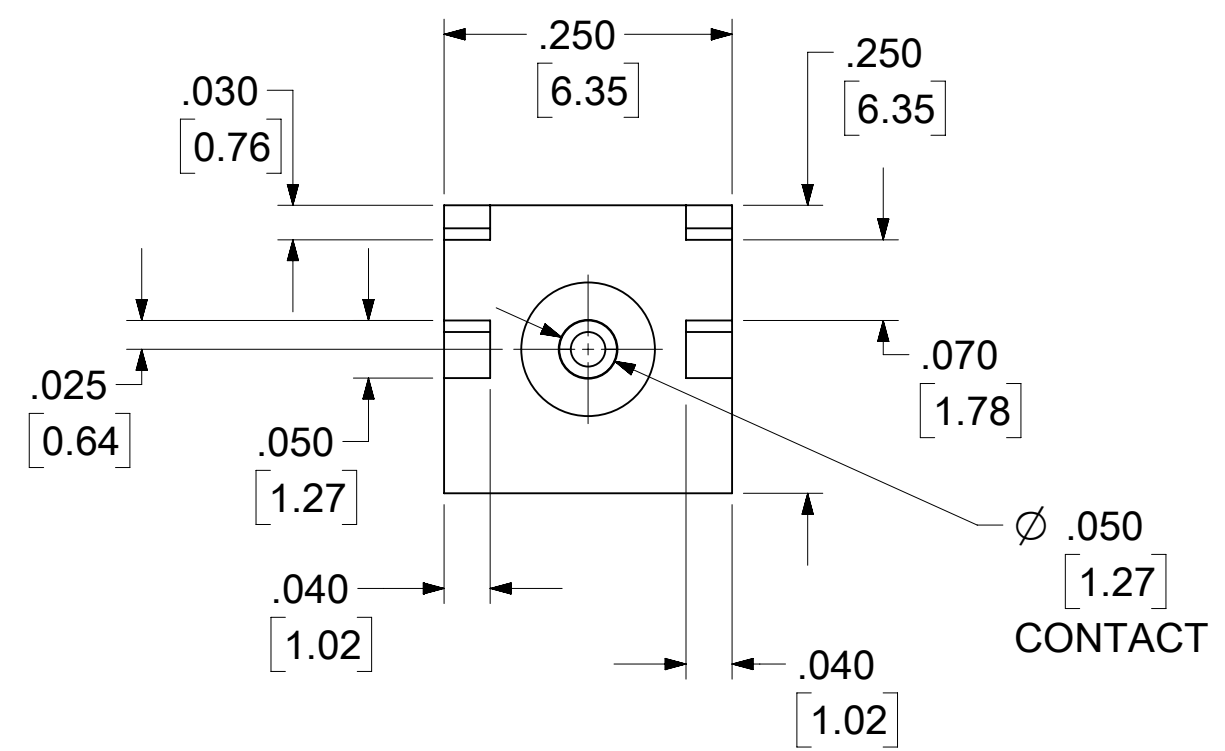
**JAM NUT: BRASS  
PLATED GOLD**

**LOCK WASHER: PHOSPHOR BRONZE  
PLATED GOLD**



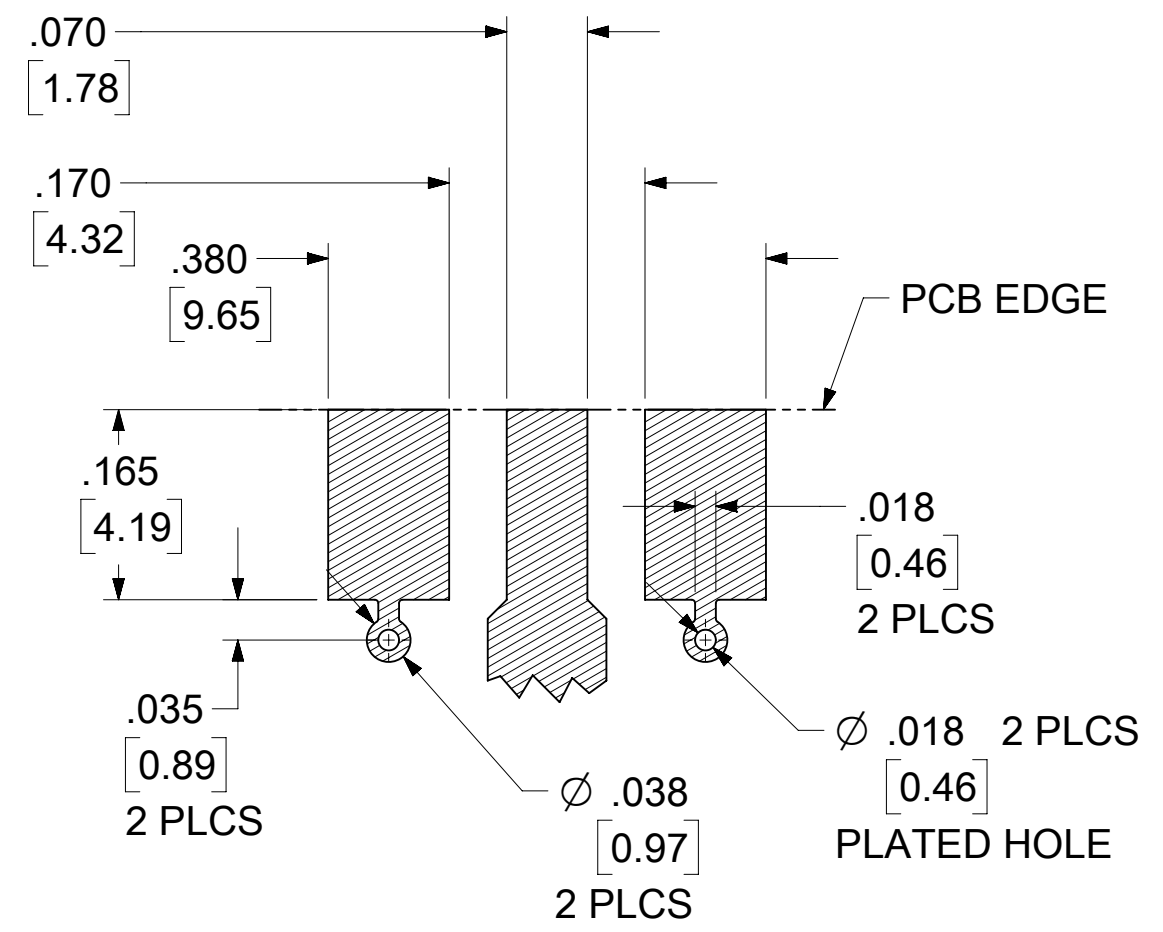
**RECOMMENDED  
PANEL CUTOUT**

**SMA JACK  
POLARIZED  
INTERFACE**



**RECOMMENDED PAD LAYOUT**

**BASE WIDTH: .250 (6.35) NOM.  
BOARD THICKNESS: .062 (1.57) NOM.  
BOARD MATERIAL: FR4 W/1.0 OZ  
COPPER BOTH SIDES**



73251-3152	ONE PER BAG, PER P/N 89542-0088
73251-3151	BY TRAY, PER P/N 89542-0040
PART NO.	PACKAGING

<b>FUNCTIONAL SYMBOLS</b> $\frac{F}{A} = 0$ $\frac{F}{C} = 0$ $\frac{F}{P} = 0$	THIS DRAWING CONTAINS INFORMATION THAT IS PROPRIETARY TO MOLEX ELECTRONIC TECHNOLOGIES, LLC AND SHOULD NOT BE USED WITHOUT WRITTEN PERMISSION		CURRENT REV DESC:							
	DIMENSION UNITS: <b>IN/MM</b> SCALE: <b>NTS</b>	GENERAL TOLERANCES (UNLESS SPECIFIED) ANGULAR TOL ± 2.0°							EC NO: 703163 DRWN: CWEI02 CHK'D: YCHENG APPR: YCHENG	
<b>DIVISIONAL SYMBOLS</b> 4 PLACES ± 3 PLACES ± 2 PLACES ± 1 PLACE ± 0 PLACES ±	DRAFT WHERE APPLICABLE MUST REMAIN WITHIN DIMENSIONS		THIRD ANGLE PROJECTION		DRAWING: <b>C-SIZE</b>		SERIES: <b>73251</b>		PRODUCT CUSTOMER DRAWING	
	INITIAL REVISION: DRWN: AROBERTSON APPR: JWIENER		2007/01/31 2010/10/27		DOCUMENT NUMBER: <b>SD-73251-315</b>		DOC TYPE: <b>PSD</b> DOC PART: <b>001</b> REVISION: <b>A2</b>		MATERIAL NUMBER: <b>SEE TABLE</b> CUSTOMER: <b>GENERAL MARKET</b> SHEET NUMBER: <b>2 OF 2</b>	