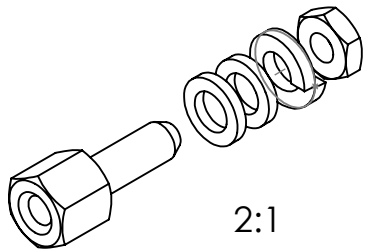


COMMENT:
ALL RIGHTS ARE RESERVED BY US FOR THIS DRAWING. WITHOUT OUR PRIOR CONSENT,
IT MAY NEITHER BE DUBLICATED NOR MADE AVAILABLE TO A THIRD PARTY,
AND IT ALSO MAY NOT BE IMPROPERLY USED BY TE RECEIVER, OR A THIRD PARTY.



2:1

4-40UNC x 3.1
Length of
engagement

HEX5

Screw

4-40UNC

Washer

Spring
washer

✓Nut

4-40UNC

HEX4.5

1731121357	F62M075S253+S	Steel (Lead free) 2)	zinc plated 1)	1	-	-	-
1731121051	F62M075S245+S		tin plated	1	-	-	-
1731120595	F-GSCH1/5-K952		zinc plated 1)	1	2	1	1
1731120617	F-GSCH1/5-K952SN	Steel	tin plated	1	2	1	1
<i>Material Number</i>	<i>FCT Part Number</i>	<i>Material</i>	<i>Surface</i>	<i>Screw (pc.)</i>	<i>Washer (pc.)</i>	<i>Spring Washer (pc.)</i>	<i>Nut (pc.)</i>

FUNCTIONAL SYMBOLS

$$\begin{aligned} F_A &= 0 \\ F_C &= 0 \\ F_P &= 0 \end{aligned}$$

THIS DRAWING CONTAINS INFORMATION THAT IS PROPRIETARY TO MOLEX ELECTRONIC TECHNOLOGIES, LLC AND SHOULD NOT BE USED WITHOUT WRITTEN PERMISSION

DIMENSION UNITS

SCALE

5:1

MEASUREMENTS WITHOUT
TOLERANCE ACC. TO
ISO 2768-mK

CURRENT REVISION

DRWN: DRAWN BY	mteubel	04-06-2025
APPR: APPR BY	mteubel	04-06-2025

INITIAL REVISION

DRWN: DRAWN BY	schref	27-05-2003
APPR: APPR BY	aschiekofer	27-05-2003

REPLACEMENT FOR:
1731120595_Rev.A1



DRAWING

A4-SIZE

molex

FCT Female Screw Lock
F-GSCH1/5-K952

PRODUCT CUSTOMER DRAWING

MATERIAL NUMBER	
-----------------	--

see table

C

4

Generally twice a material number respectively FCT part number is needed per connector.

Packaging specification: 1731120003-PK

1) With tension control fluid

2) RoHS complaint