

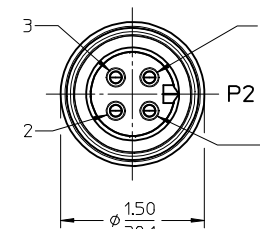
S1  
FEMALE FACE VIEW

NOTES:

- 1) MATERIAL: SEE TABLE
- 2) FINISHES: SEE TABLE
- 3) WRAP LABEL IS MARKED WITH P/N, DATE CODE VOLTAGE & AMPERAGE
- 4) MATES WITH: QUICK CHANGE 4 POLE RECEPTACLE
- 5) ELECTRICAL DATA:  
10AWG UL TYPE: TC-ER STRANDED CABLE  
MAX VOLTAGE: 600V  
MAX CURRENT: 32A  
PROTECTION IP67 (WHEN MATED)  
TEMPERATURE RANGE: -20°C TO 90°C
- 6) PACKAGING:  
CABLE ASSEMBLIES ARE BAGGED SEPERATLY IN POLY BAGS  
WITH BAR CODE LABEL ATTACHED TO OUTSIDE OF BAG.
- 7) ASSEMBLY IS RoHS COMPLIANT

S1		P2	
1	BLACK-1	1	
2	GREEN/YELLOW	2	
3	BLACK-3	3	
4	BLACK-2	4	

WIRING DIAGRAM



MALE FACE VIEW

PART NUMBER LEGEND

CC4033K17MXXXG

DOUBLE END  
POLE COUNT: 4  
QC FEMALE 90 DEG TO MALE 90 DEG  
CABLE TYPE: 10 AWG TC ER, BLACK  
OVERMOLD COLOR: BLACK  
FINISHED LENGTH:  
M001= .1M  
M010= 1.0M  
M100= 10.0M

11	2	WARNING LABEL	VINYL	ORANGE/BLACK
10	1	WRAP LABEL	VINYL	BLACK/YELLOW
9	1	OVERMOLD, 90 DEG.	PVC	BLACK
8	1	COUPLING, MALE	ALUMINUM	CLEAR ANODIZE
7	4	CONTACT PIN	Cu ALLOY	GOLD PLATED
6	1	INSERT, MALE	PVC	BLACK
5	1	OVERMOLD, 90 DEG.	PVC	BLACK
4	1	COUPLING, FEMALE	ALUMINUM	CLEAR ANODIZE
3	4	CONTACT SOCKET	Cu ALLOY	GOLD PLATED
2	1	INSERT, FEMALE	PVC	BLACK
1	1	CABLE, 10/4 TC-ER (SEE NOTE 5)	TPE JACKET	BLACK
ITEM	QTY.	DESCRIPTION	MATERIAL	FINISH

RELEASED  
EC NO: JG2016-0989  
DRAWN BY: DRWNRSTONE  
CHKD: CHKD:  
APPR: BWOODMAN  
REV: A

DESCRIPTION  
2016/02/02  
2016/03/25

QUALITY SYMBOLS  
=0  
=0

GENERAL TOLERANCES (UNLESS SPECIFIED)  
mm INCH  
4 PLACES ± --- ± ---  
3 PLACES ± --- ± ---  
2 PLACES ± --- ± .01  
1 PLACE ± 0.3 ± ---  
0 PLACE ± --- ± ---  
ANGULAR ± 1 °  
DRAFT WHERE APPLICABLE MUST REMAIN WITHIN DIMENSIONS

DIMENSION STYLE  
IN/MM  
DRAWN BY: RSTONE  
DATE: 2016/02/02  
CHECKED BY: DATE:  
APPROVED BY: BWOODMAN  
DATE: 2016/03/25  
MATERIAL NO. -  
SIZE C

SCALE 1:1  
DESIGN UNITS INCH  
THIRD ANGLE PROJECTION  
TITLE  
QUICK CHANGE CORD ASSY  
FEM 90 D TO MALE 90D  
10/4 TPE CABLE  
molex  
DOCUMENT NO. SD-130064-014  
SHEET NO. 1 OF 1  
THIS DRAWING CONTAINS INFORMATION THAT IS PROPRIETARY TO MOLEX INCORPORATED AND SHOULD NOT BE USED WITHOUT WRITTEN PERMISSION